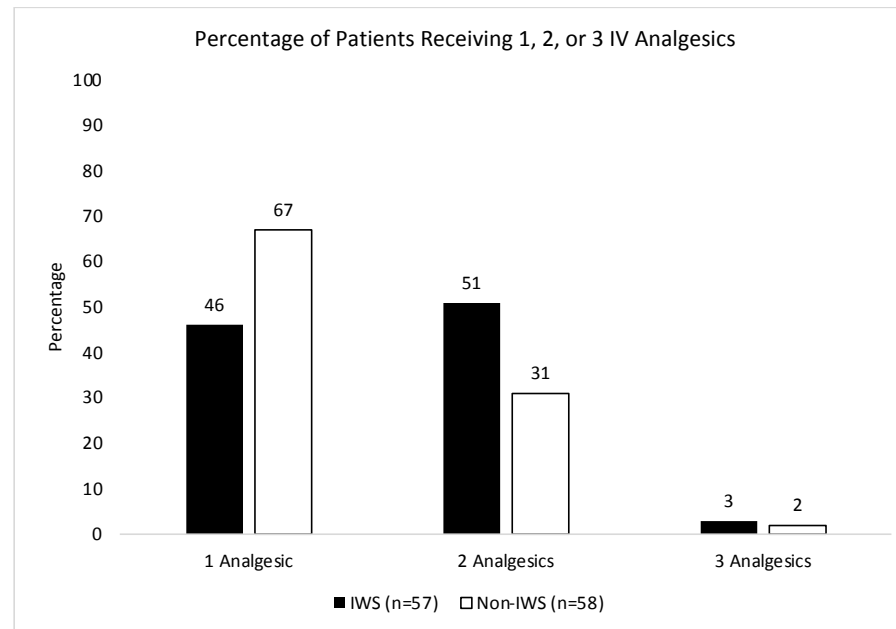
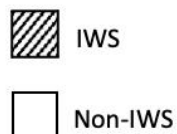
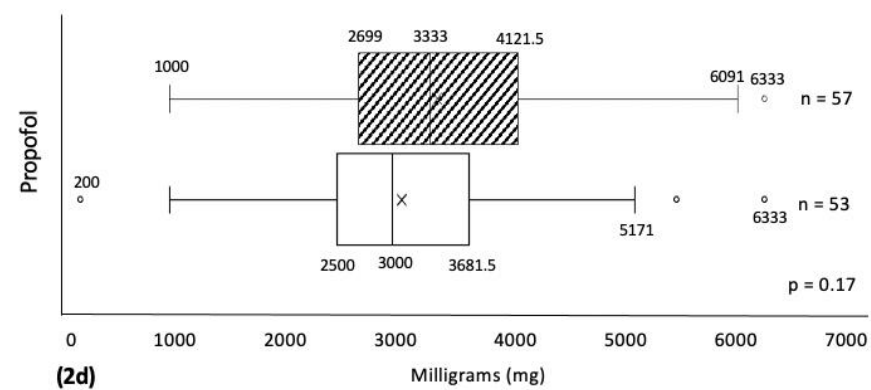
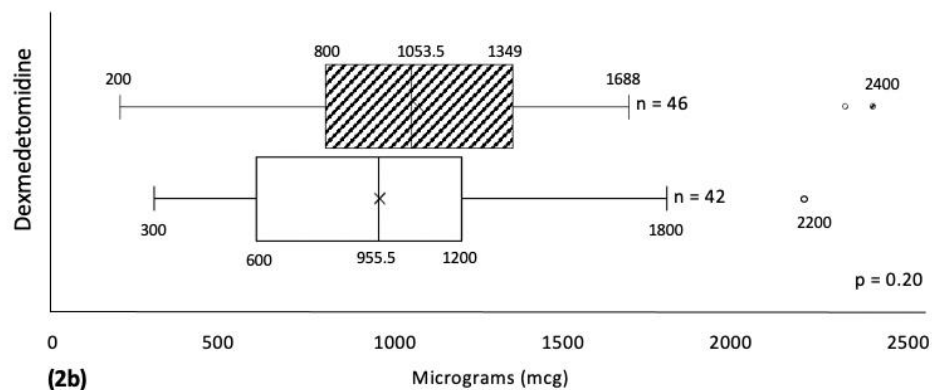
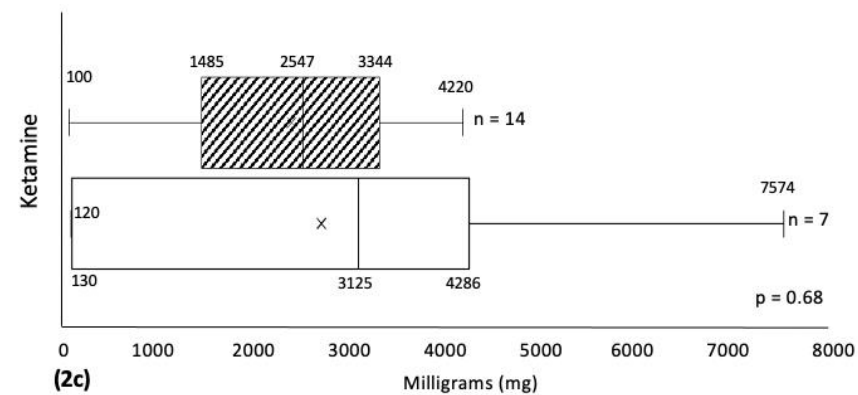
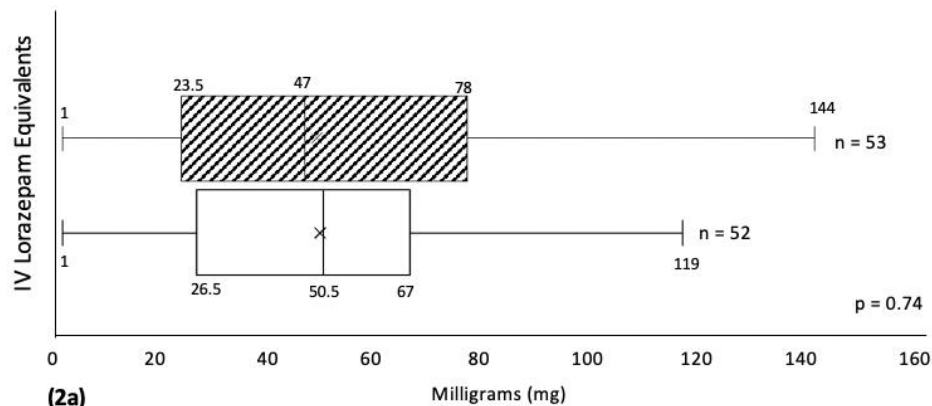


(1a)

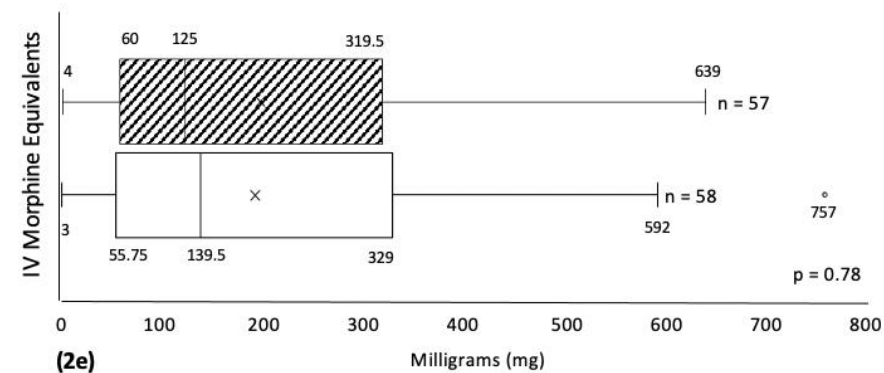


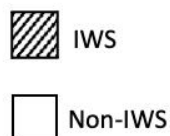
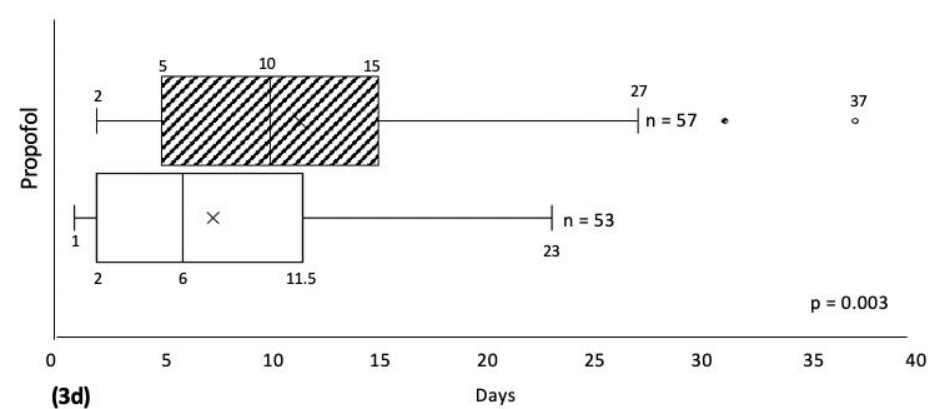
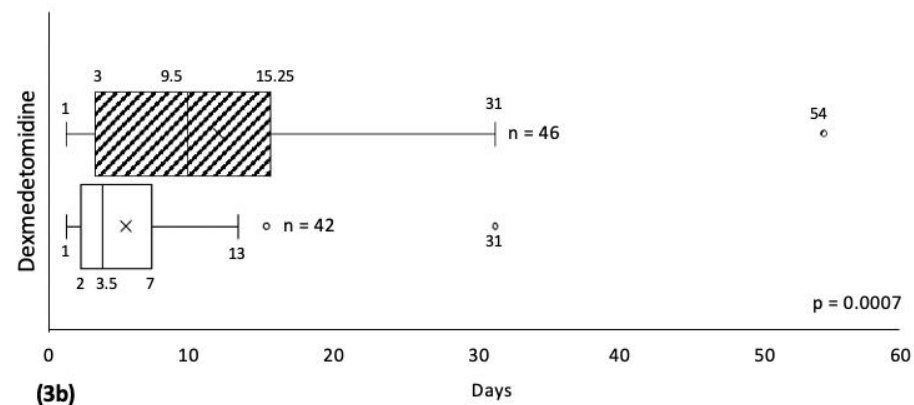
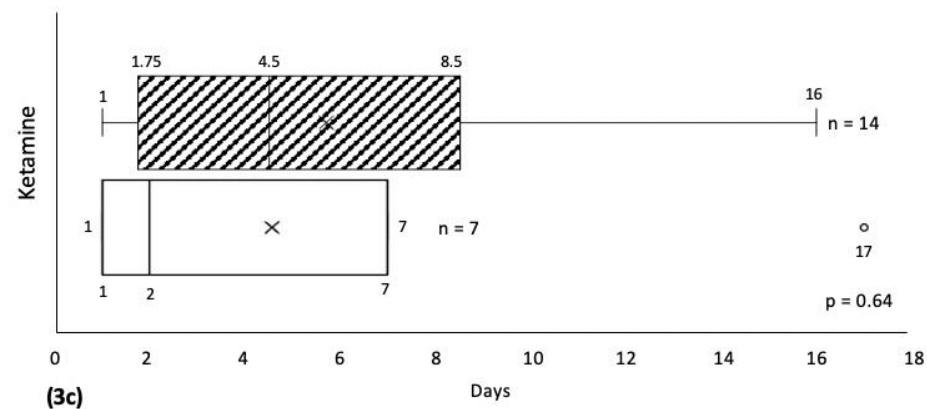
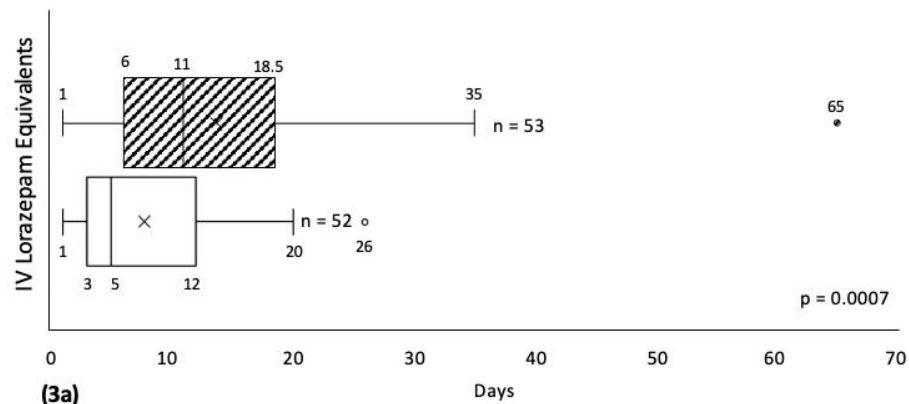
(1b)

Supplemental Figures 1a-1b. Total number of different IV sedative (1a) and IV analgesic (1b) medications received while in the ICU in the IWS vs non-IWS groups. Note, this does not include information on degree of overlap between different sedatives and/or analgesics. IV benzodiazepines, dexmedetomidine, propofol, and ketamine were classified as sedatives. Analgesics used were fentanyl, morphine, and hydromorphone.



Supplemental Figures 2a-2e. Median and quartile ranges of average daily doses of each IV medication, only in patients who received them.





Supplemental Figures 3a-3e. Median and quartile ranges of cumulative durations of each IV medication, only in patients who received them.

