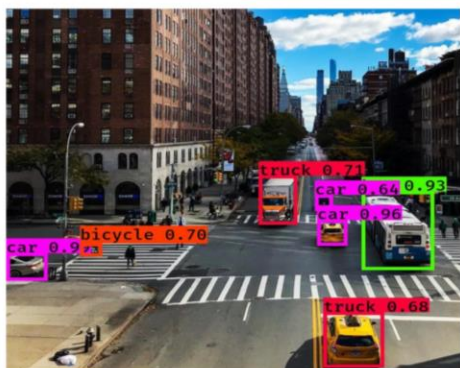




Figure. S1. Scene from Atlanta Beltline Park(left) retrieved from: <https://www.ajc.com/business/beltline-urges-recreational-visitors-stay-away-prevent-crowds/I2146qZ806gQBGtjiJomZO/>; Scene from the High Line Park (right) retrieved from: <https://www.timeout.com/newyork/parks/highline>



Figure S2. Examples of face detection results from FacePlusPlus



a. vehicle objects are accurate



b. bicycle objects are accurate



c. furry object as dog



d. human hairs as cat



e. art sculpture as dog



f. cannot detect small handbags

Figure S3. Examples of object detection result.