

## SUPPLEMENTAL MATERIAL

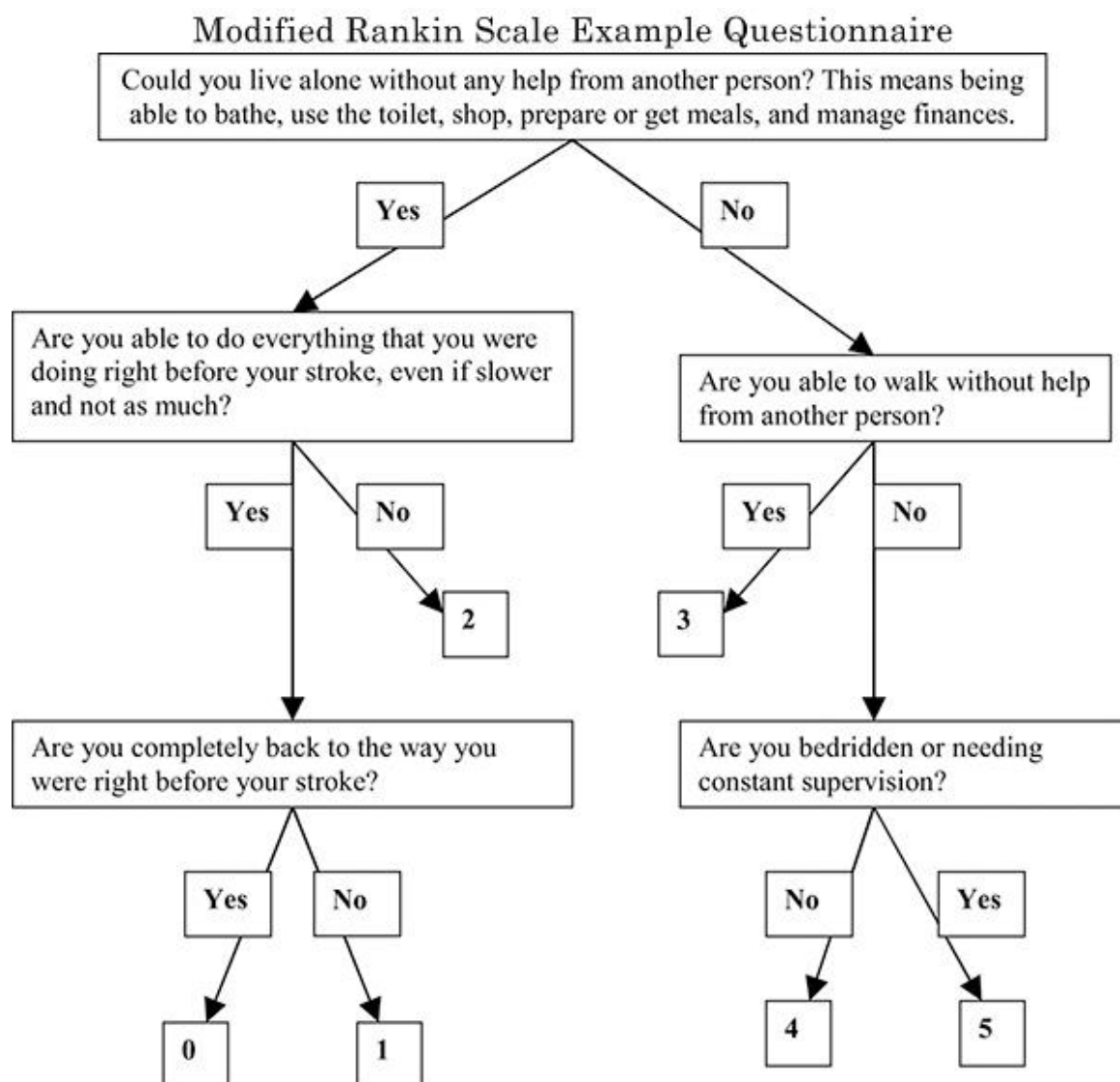
### Supplemental Tables

#### **Supplement Table I. Modified Rankin Scale for Measuring the Degree of Disability or Dependence in the Daily Activities of People who Experience a Stroke**

<b>Score</b>	<b>Description</b>
0	No symptoms at all
1	No significant disability despite symptoms; able to carry out all usual duties and activities
2	Slight disability; unable to carry out all previous activities, but able to look after own affairs without assistance
3	Moderate disability; requiring some help, but able to walk without assistance
4	Moderate severe disability; unable to walk without assistance and unable to attend to own bodily needs without assistance
5	Severe disability; bedridden; incontinent and requiring constant nursing care and attention
6	Dead

**Supplement Table II. Comparison of baseline characteristics of patients in the current sub-study versus those with missing 90-day mRS in the BEST-MSU study**

Characteristic	90-day mRS not missing	90-day mRS missing	p-value
Number of patients	240	205	
Age, mean (SD)	63.94 (15.78)	66.34 (14.58)	0.099
Baseline NIHSS, median [IQR]	7.00 [5.00, 12.00]	9.00 [5.00, 17.00]	0.045
Male Gender, n (%)	115 (47.9)	104 (50.7)	0.619
Ethnicity, n (%)			0.756
Hispanic or Latino	47 (19.6)	39 (19.0)	
Not Hispanic or Latino	193 (80.4)	165 (80.5)	
Not reported	0 (0.0)	1 (0.5)	
Race, n (%)			0.882
American Indian or Alaska Native	1 (0.4)	1 (0.5)	
Asian	10 (4.2)	7 (3.4)	
Black or African-American	93 (38.8)	76 (37.1)	
Native Hawaiian or other Pacific Islander	1 (0.4)	0 (0.0)	
White	131 (54.6)	120 (58.5)	
Not reported	2 (0.8)	1 (0.5)	
Unknown	2 (0.8)	0 (0.0)	
Education level, n (%)			0.005
Less than high school	41 (17.1)	43 (21.2)	
GED/high school diploma	73 (30.4)	62 (30.5)	
Some college	65 (27.1)	34 (16.7)	
College degree	37 (15.4)	36 (17.7)	
Graduate school	24 (10.0)	20 (9.9)	
Missing	0 (0.0)	8 (3.9)	
Pre-stroke mRS, n (%)			0.031
0	170 (70.8)	121 (59.0)	
1	26 (10.8)	23 (11.2)	
2	15 (6.2)	23 (11.2)	
3	25 (10.4)	26 (12.7)	
4	4 (1.7)	10 (4.9)	
5	0 (0.0)	2 (1.0)	



**Supplement Figure I. Modified Rankin Scale Questionnaire**