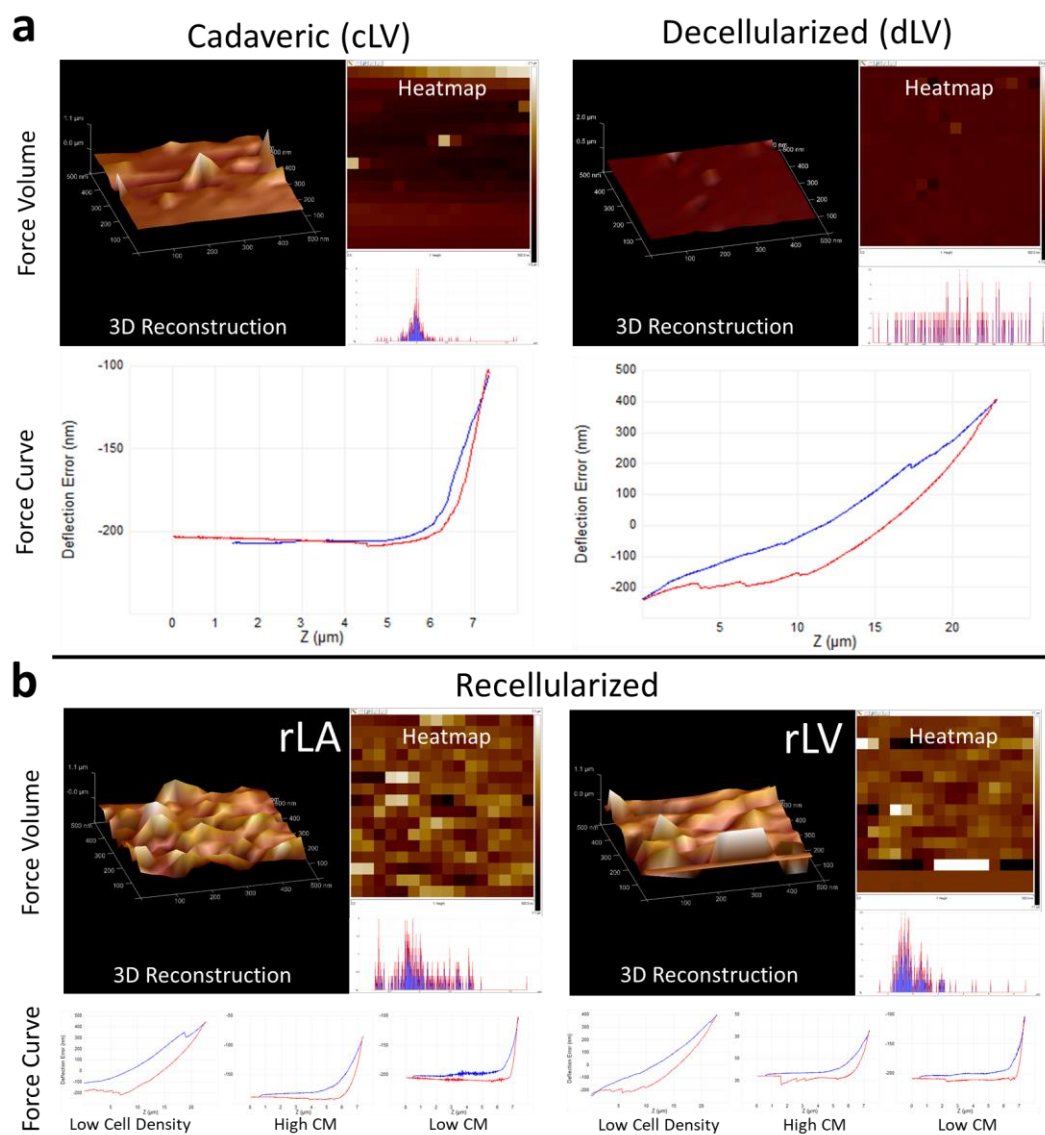


**Supplemental figure 1. a**, Representative histogram of Troponin T staining (red) of hESC-CM before seeding cells over rat dECM. All cell preparations contained over 60% of troponin T expressing cells. **b**, number of cells non-attached (supernatant and plate-attached) to the matrix after 48 hours.



**Supplemental figure 2. a**, Representative image of force volume data obtained from non-recellularized cadaveric (cLV) and decellularized (dLV). **b**, Representative image of force volume (top) and force curve (bottom) from Low Cell Density, High CM, and Low CM of rLA and rLV. rLA=recellularized left atrium, rLV=recellularized left ventricle, dLV= decellularized left ventricle, cLV = non-decellularized left ventricle, CM = cardiomyocyte.