

Figure S1: Gating of slanDC

Monocytes were characterized by staining positive for CD45 and CD86. These cells were divided according the expression of CD14 and CD16 into three monocyte subsets (CD14⁺⁺CD16⁻, Mo1; CD14⁺⁺CD16⁺, Mo2; CD14⁺CD16⁺⁺, Mo3). slanDC-positive cells are within the CD14⁺CD16⁺⁺ (Mo3) gate. Positivity of slanDC is determined due to isotype control staining.

Fig. S1:

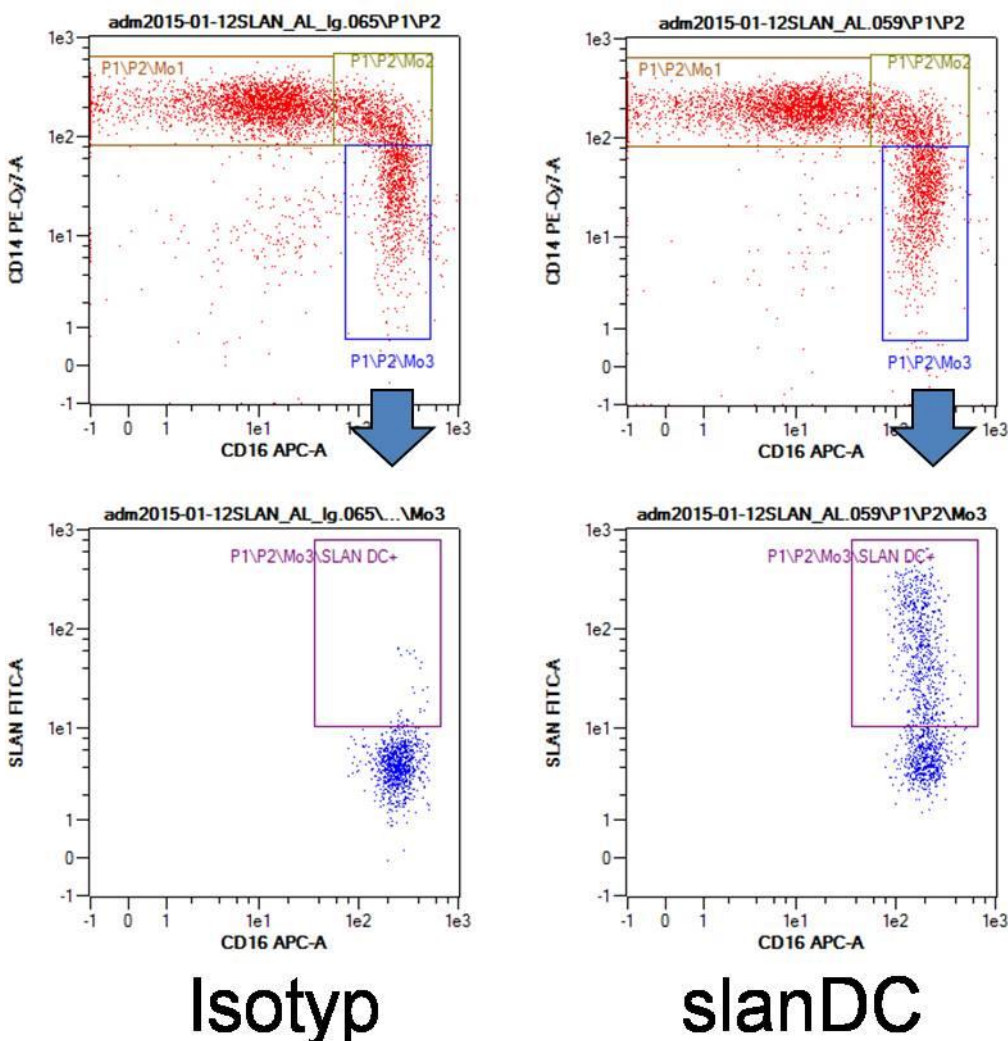


Figure S2: slanDC in HD patients and healthy controls

Monocytes were characterized by staining positive for CD45 and CD86.. slanDC-positive cells were related to the pan-monocyte marker CD86. HD patients (N=19) expressed twice as much slanDC compared to healthy controls.

Figure S1

