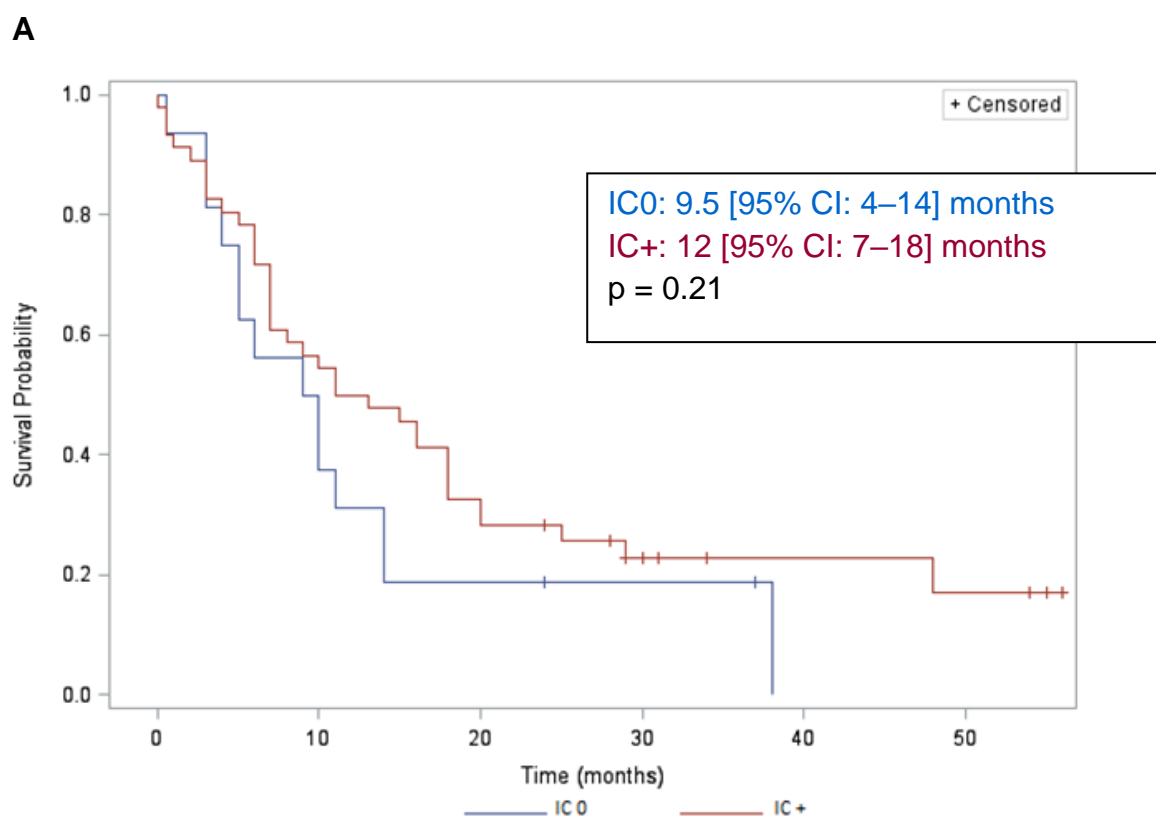


Fig. 1S. Median overall survival [95% confidence interval] of patients with metastatic large-cell neuroendocrine carcinomas of the lung, according to the intensity of programmed cell-death-protein-1–ligand-1 expression on inflammatory cells (ICs): (A) negative (IC–) or positive (IC+) or (B) negative or IC1: 1–5%+ (IC0–1) or more intense IC2: 5–10%+; and IC3: >10%+ (IC2/3).



B

