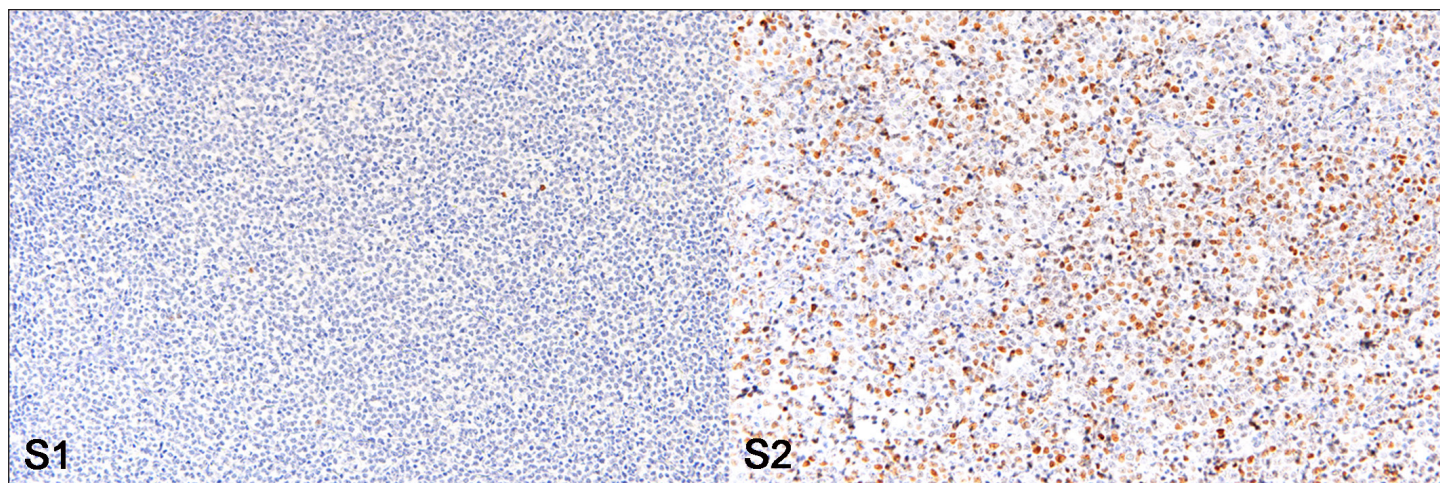


Shiga et al. Long-term observation of the progression from nodal marginal zone lymphoma to diffuse large B-cell lymphoma in a dog.



Supplemental Figure S1. Late-stage nodal marginal zone lymphoma, right mandibular lymph node dog. The nuclear labeling for p53 is rarely observed. Immunohistochemistry (IHC).

Supplemental Figure S2. Diffuse large B-cell lymphoma, hepatic lymph node, dog. The nuclear labeling for p53 is frequently observed. IHC.

| | | | | | | |
|-------------------------|-------------------|------------|------------|-----------|------------|---------|
| Right popliteal LN | (nMZL) | GCAAGAGACC | TGCTGGTCTC | TTTGACTAC | TGGGGCCAGG | GAACCCT |
| Right mandibular LN | (late-stage nMZL) | | | | | |
| Superficial cervical LN | (DLBCL) | | | | | |
| Hepatic LN | (DLBCL) | | | | | |

S3

Supplemental Figure S3. Identical DNA sequence of complementarity determining region-3 of the immunoglobulin heavy chain gene from each lymph node with different types of lymphoma in a dog. LN, lymph node; nMZL, nodal marginal zone lymphoma; DLBCL, diffuse large B-cell lymphoma.

Veterinary Pathology: Supplemental Materials.

Shiga et al. Long-term observation of the progression from nodal marginal zone lymphoma to diffuse large B-cell lymphoma in a dog.

Supplemental Table S1. Primary antibodies used for immunohistochemistry.

| Antibody against | Host & Clone | Dilution | Antigen retrieval (buffer) | Source |
|---------------------|-----------------|----------|-------------------------------|--|
| CD3 | Rp | Rtu | Autoclave (Citrate, pH6.0) | Dako, Tokyo, Japan |
| CD20 | Rp | 1:400 | No pre-treatment | Thermo Scientific, Waltham, MA, USA |
| CD79a | Mm, HM57 | 1:50 | Autoclave (EDTA, pH9.0) | Dako, Tokyo, Japan |
| Bcl-2 | Rp | 1:100 | Autoclave (EDTA, pH9.0) | Cell Signaling Technology, Danvers, MA, USA |
| p53 | Rp | 1:50 | Autoclave (EDTA, pH9.0) | Santa Cruz, Dallas, TX, USA |
| Ki67 | Mm, MIB-1 | Rtu | Autoclave (Citrate, pH6.0) | Dako, Tokyo, Japan |

Abbreviations: Rp, Rabbit polyclonal; Mm, Mouse monoclonal; Rtu, Ready-to-use