

Table S1. Degree of remission from first relapse

		Degree of relapse remission, number (%)			
		Complete	Partial	None	Unknown (no documentation)
Domain affected in the first 2 years	Cerebellar n = 2723	652 (24%)	489 (18%)	32 (1.2%)	1189 (44%)
	Brainstem n = 3915	1151 (29%)	542 (14%)	35 (0.9%)	1773 (45%)
	Pyramidal n = 5530	1457 (26%)	932 (17%)	74 (1.3%)	2340 (42%)
Study cohort n = 10513		2922 (27%)	1493 (14%)	116 (1.1%)	4648 (44%)

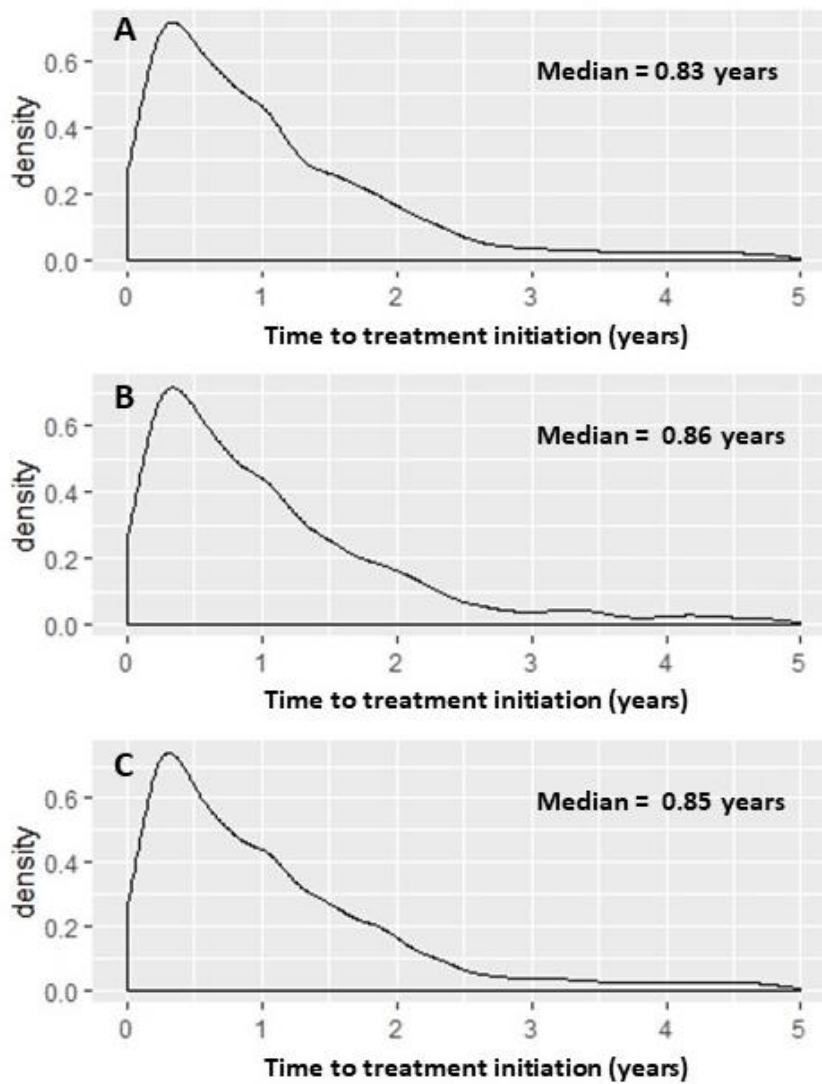
Table S2. Number of patients not exposed to DMT in the first 2 years

		Number of patients not exposed to DMT in the first 2 years (%)
Domain affected in the first 2 years	Cerebellar n = 2723	393 (14%)
	Brainstem n = 3915	635 (16%)
	Pyramidal n = 5530	848 (15%)
Study cohort n = 10513		1719 (16%)

Table S3. Disability outcomes of patients with early visual and sensory symptoms

Domain affected in the first 2 years	n (% cohort)	EDSS scores (Mixed effect models)		Disability progression (Andersen-Gill models)	
		β (95%CI)	P value	HR (95% CI)	P value
Visual	4053 (38.6%)	-0.05 (-0.06 – -0.04)	<0.001	0.92 (0.85 – 1.01)	0.07
Sensory	7287 (69.3%)	-0.04 (-0.05 – -0.02)	<0.001	0.84 (0.76 – 0.93)	<0.001

Figure S1. Time from disease onset to treatment initiation



Distribution of time from disease onset to treatment initiation (in years), stratified by the presence of early cerebellar (A), brainstem(B) and pyramidal (C) symptoms.