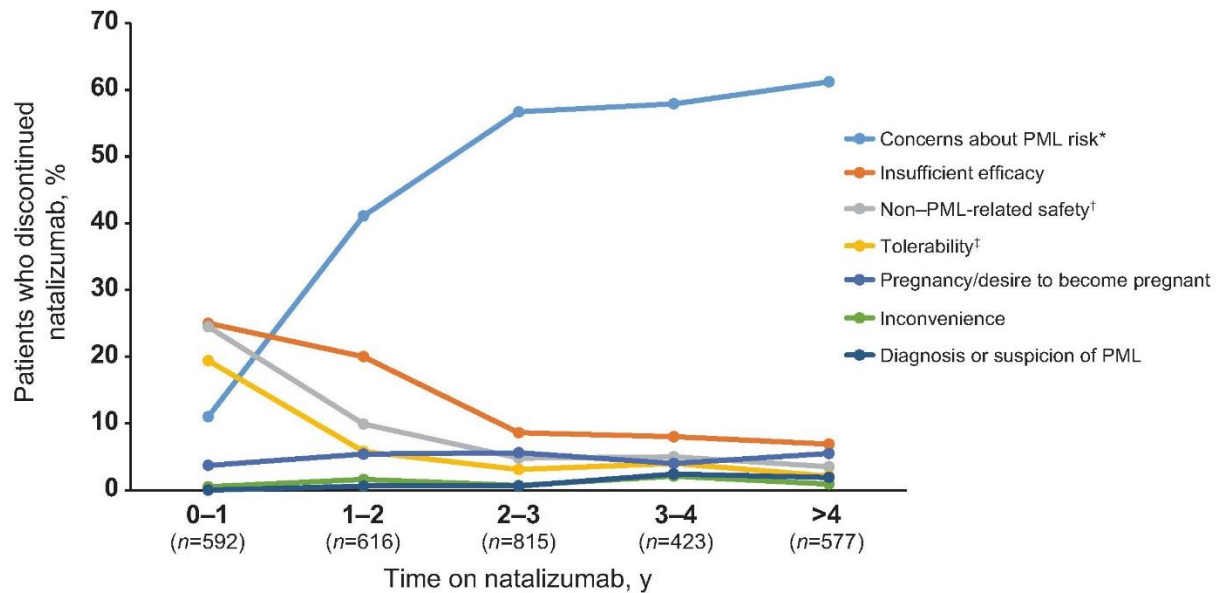


Supplementary Figure 1. Reasons given for discontinuation during each year of natalizumab treatment.



PML: progressive multifocal leukoencephalopathy.

*Includes the terms “anti-JCV [JC virus] antibody positive,” “natalizumab treatment duration concern,” “PML risk,” and “prior IS [immunosuppressant] use.”

†Includes the terms “non-serious adverse event,” “serious/other serious adverse event,” “safety concern,” “malignancy/cancer,” “death,” “opportunistic infection,” and “other serious infection.”

‡Includes the terms “tolerability problem” and “natalizumab antibody positive.”