

General Figure Explanation

The figures show the following summary for each case:

Top left panel: Motion plot for the half dose scan

Top right panel: Motion plot for the full dose scan

The motion plots show motion present for in the PWI sequence over time and corrected for by the software. Grayed out areas in these plots show frames that are ignored/interpolated based on software or user decisions to remove them where motion was not successfully corrected for. Montage of AIF and Tmax with scatter plot of Tmax differences between half and full dose maps.

Middle panel, top row: AIF (red), VOF (blue) and average tissue concentration time curve (green) for the half dose scan, then select Tmax slices for the scans.

Middle panel, bottom row: AIF (red), VOF (blue) and average tissue concentration time curve (green) for the full dose scan, then select Tmax slices for the scans corresponding to the ones for the half dose scan.

Bottom panel: Scatter plot of half dose Tmax values versus Full dose Tmax values in 3x3 regions. The lines show the $\pm 1s$ agreement boundaries

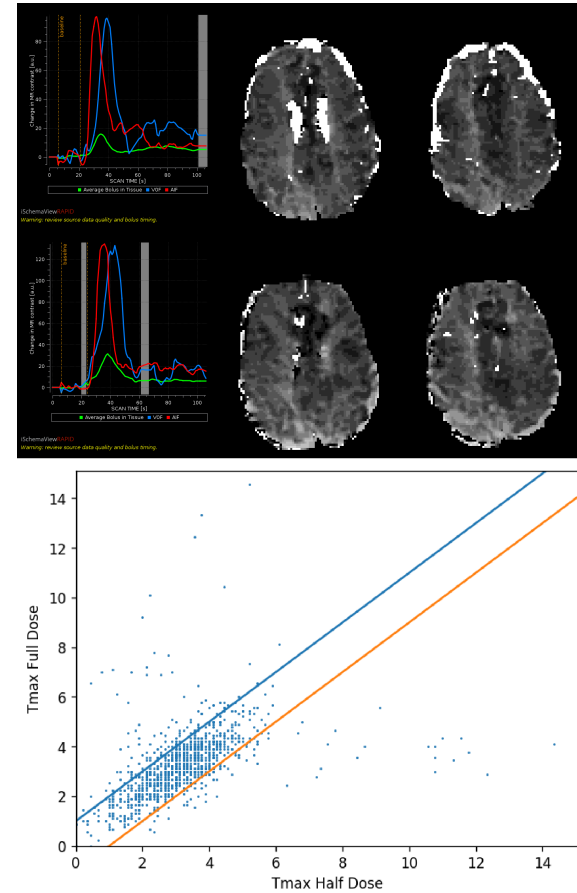


Figure 1:
Summary images for subject 1

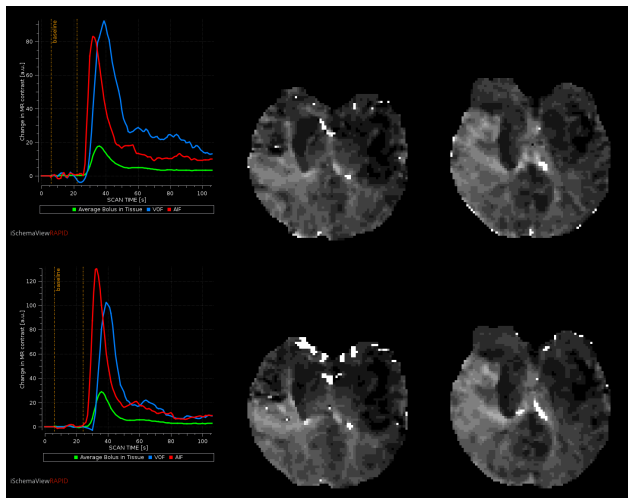


Figure 2:
Summary images for subject 2

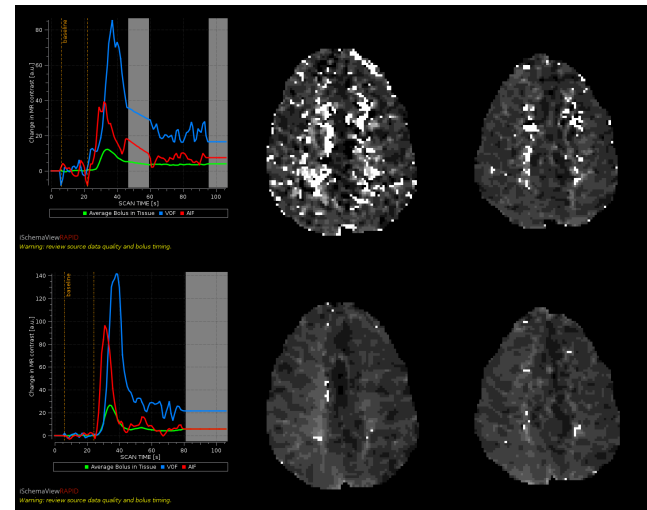
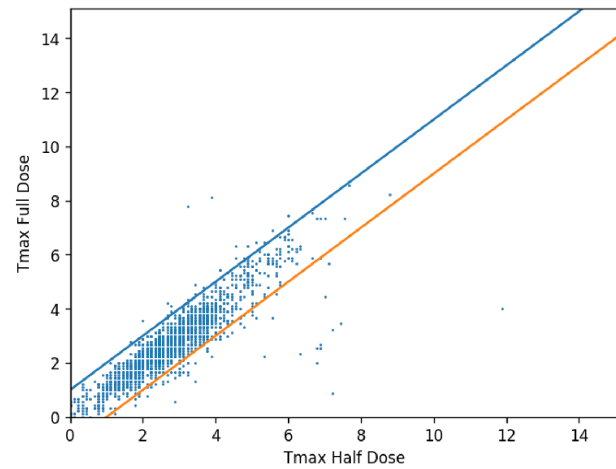
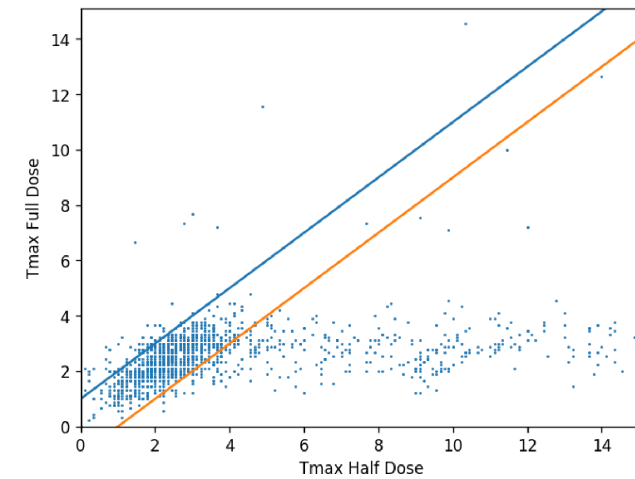


Figure 3:
Summary images for subject 3



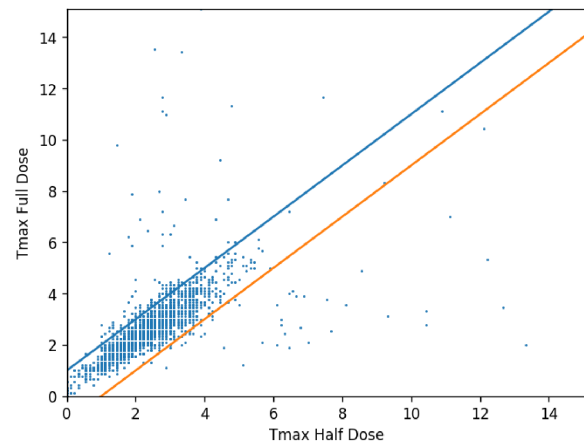
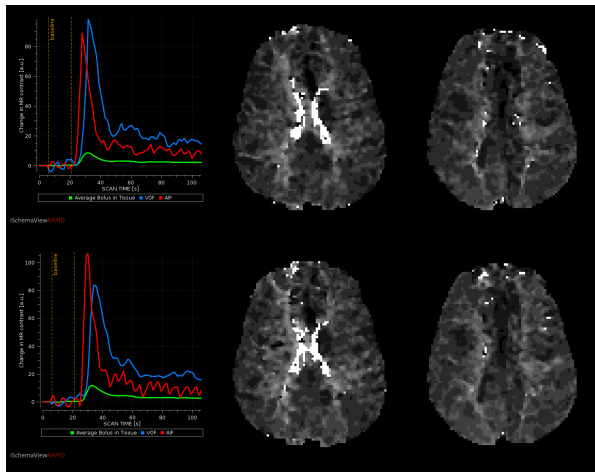


Figure 4:
Summary images for subject 4

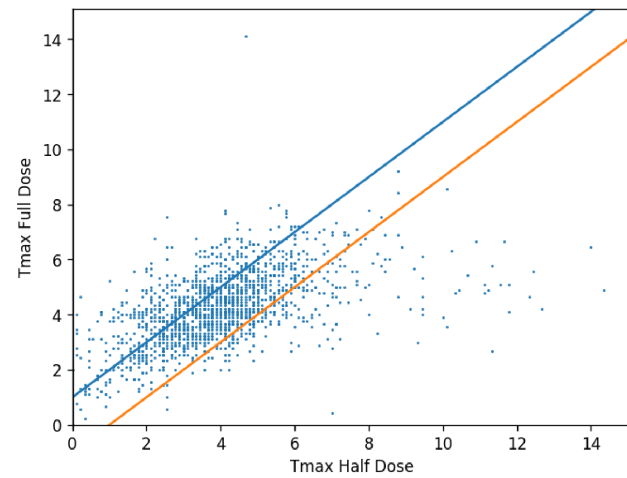
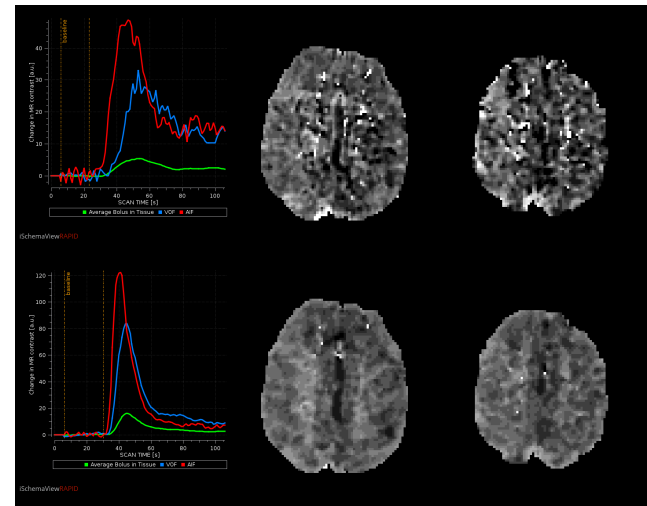


Figure 5:
Summary images for subject 5

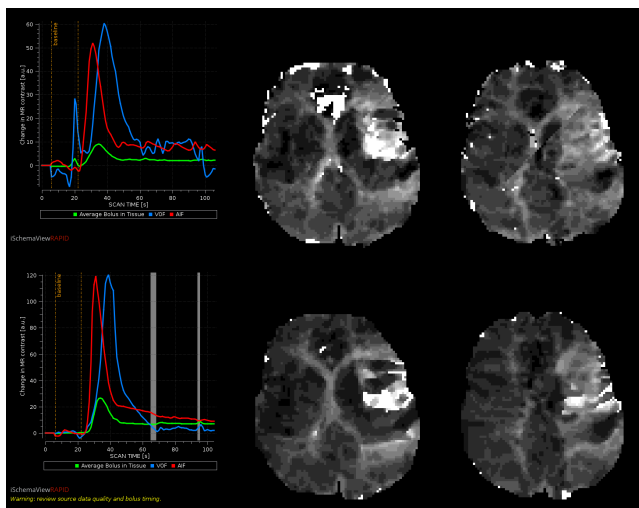


Figure 6:
Summary images for subject 6

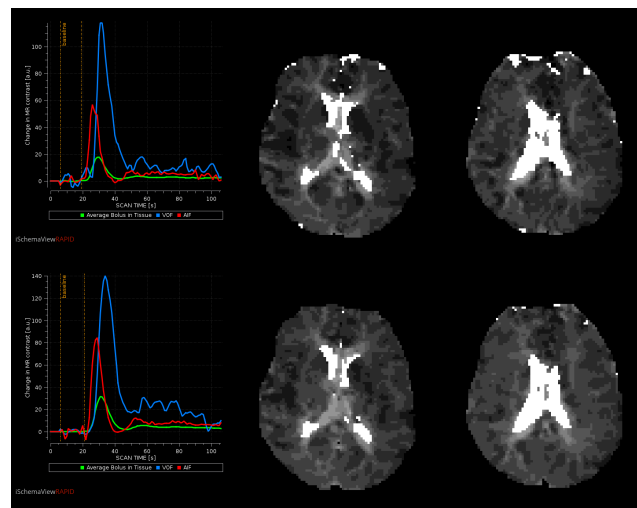
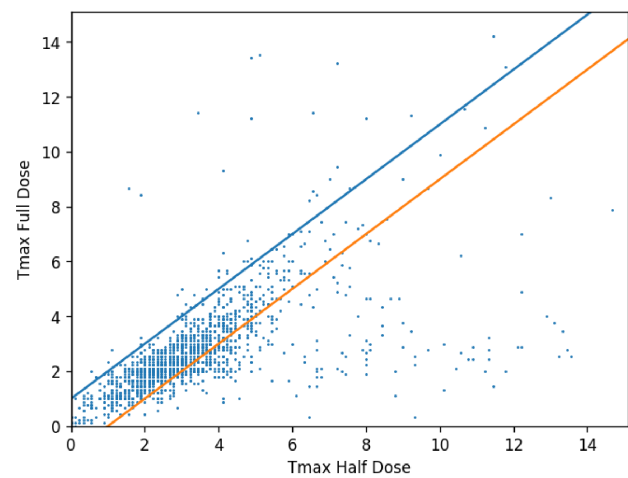
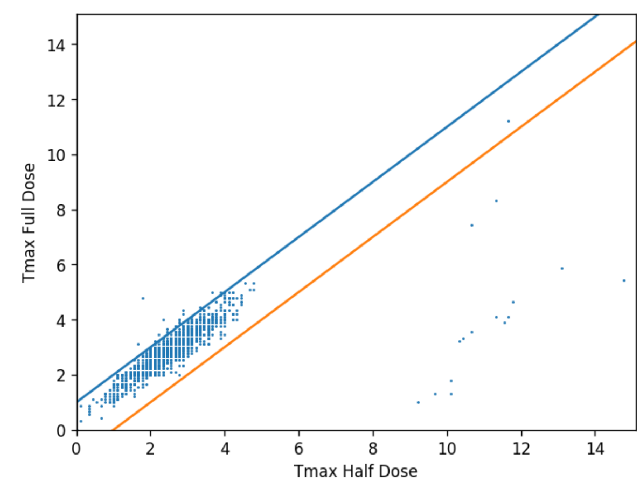


Figure 7:
Summary images for subject 7



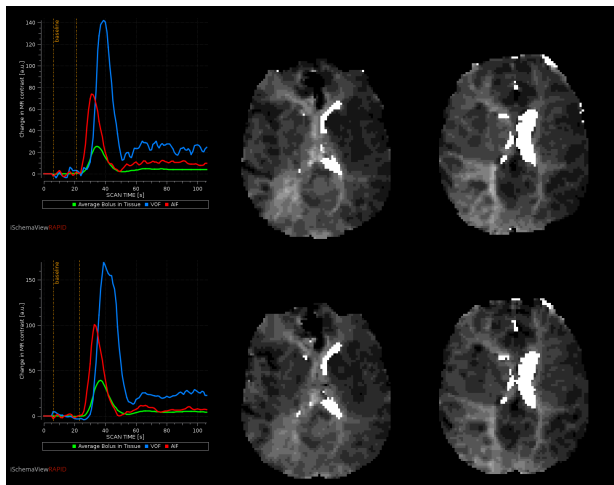


Figure 8:
Summary images for subject 8

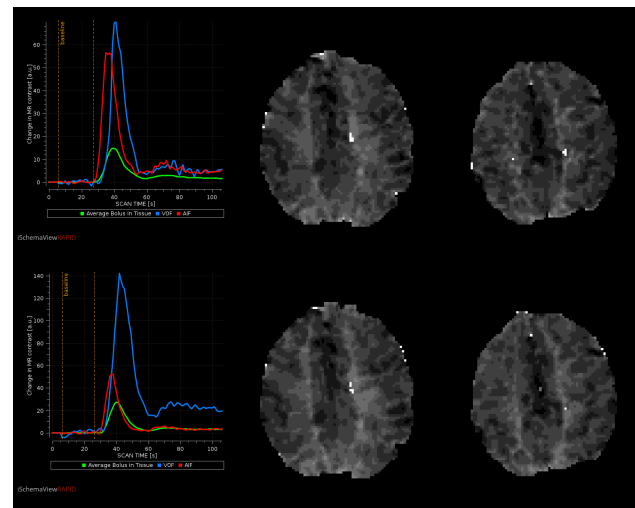
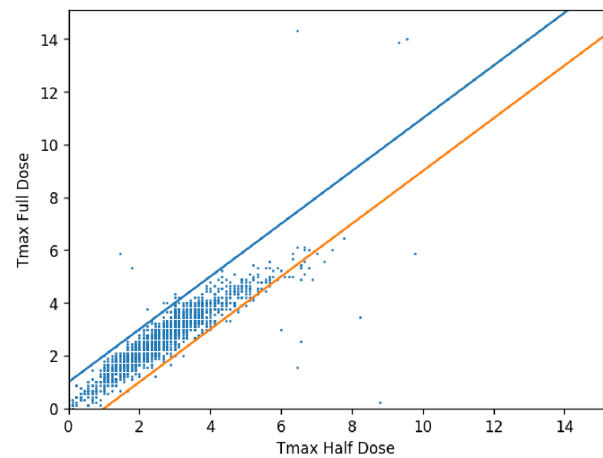
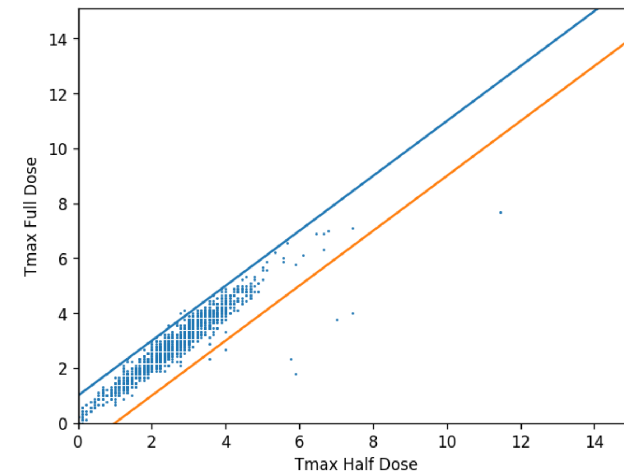


Figure 9:
Summary images for subject 9



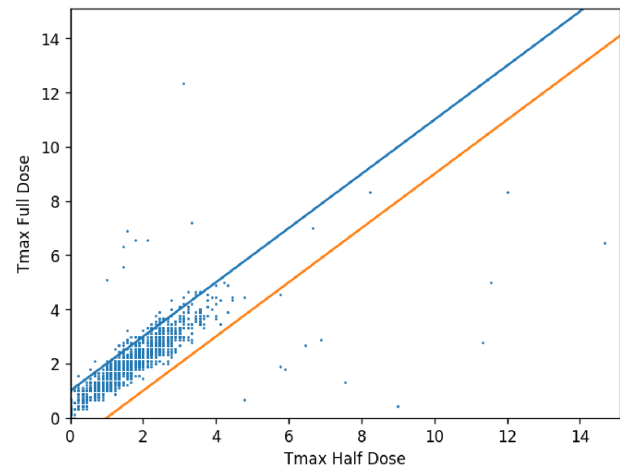
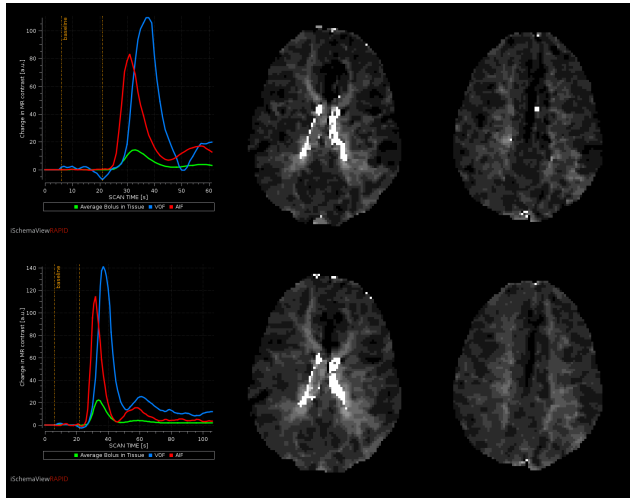


Figure 10:
Summary images for subject 10