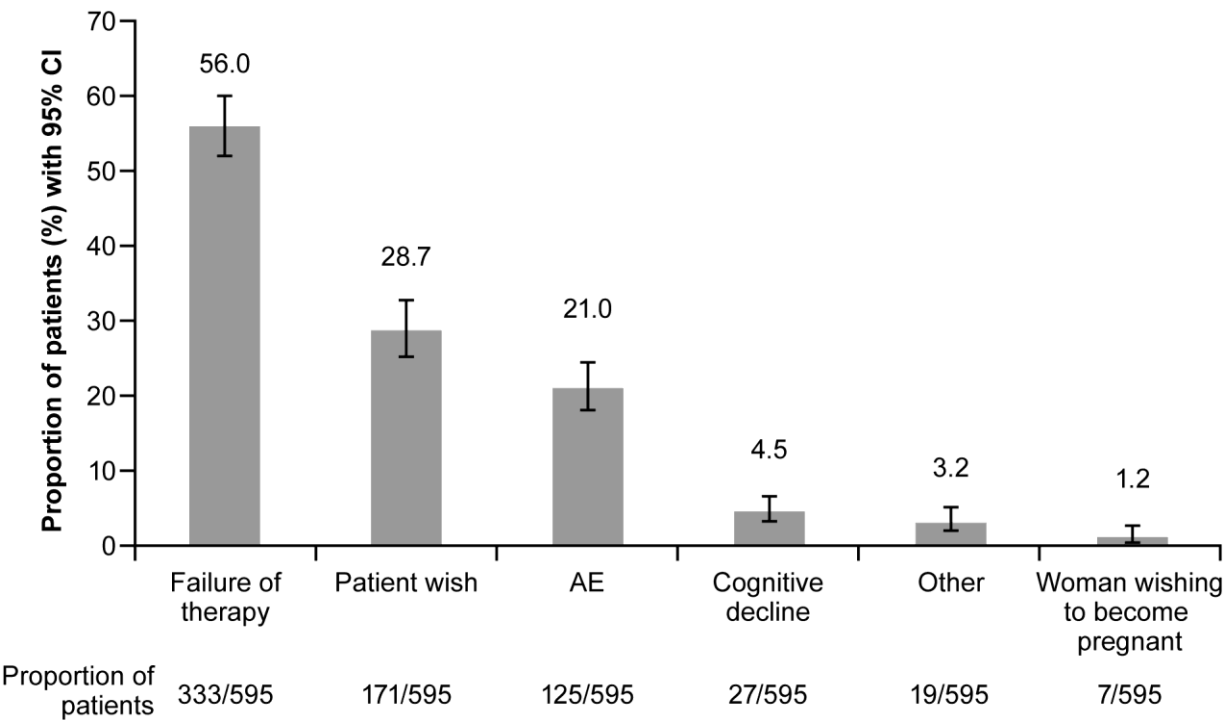


Supplementary figure S1. Reasons for switching DMT



Data were recorded retrospectively using medical charts. Multiple reasons were possible. Answer options: failure of therapy (MRI activity and/or relapses, increased disability or fatigue), cognitive decline, woman's wish to become pregnant, AEs, patient's wish, other.

AE, adverse event; CI, confidence interval; DMT, disease modifying therapy; MRI, magnetic resonance therapy.