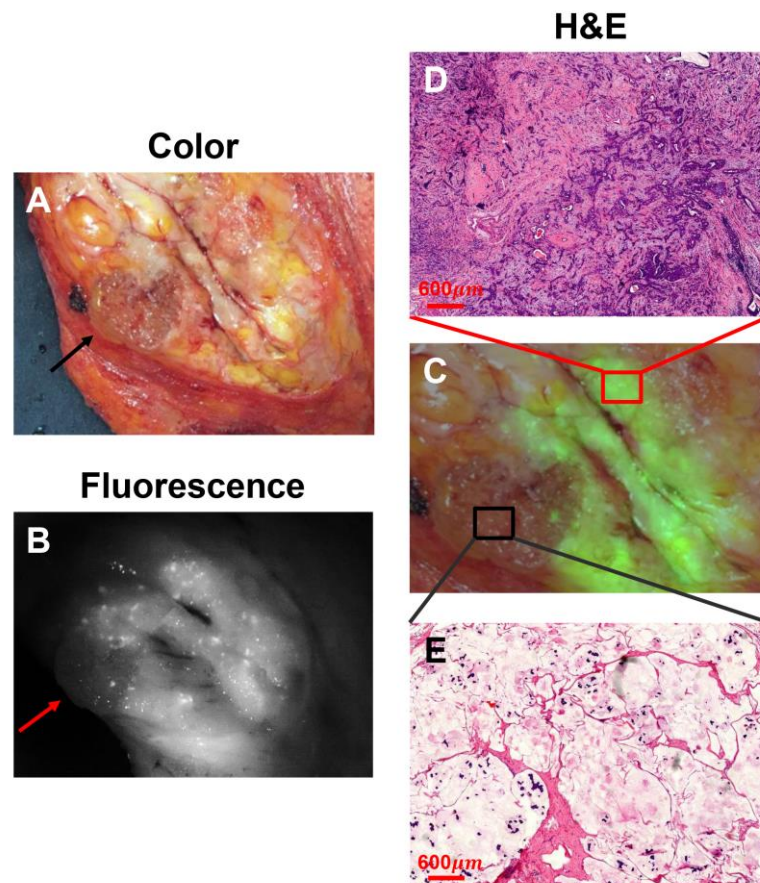


Methylene Blue based Near-infrared Fluorescence Imaging for Breast Cancer Visualization in Resected Human Tissues

Zhang Supplementary Figure



S.FIG. 1. Patient 26 with mixed breast carcinoma. (A) Color image, MUC+IDC+ILC, grade II, ER+, PR+, Her2/NEU+, MUC pointed by black arrow, tumor size: 3.5 cm; (B) fluorescence image, MUC pointed by red arrow, SBR: 2.84 ± 0.65 ; (C) Merged image, MUC circled by black box, IDC+ILC circled by red box; (D) H&E-stained image of mixed carcinoma. Scale bar: 600 μm ; (E) H&E-stained image of MUC. Scale bar: 600 μm .

Abbreviations: MB-FI, methylene blue fluorescence imaging; MB, methylene blue; SBR, signal-to-background ratio; IDC, invasive ductal carcinoma; ILC, invasive lobular carcinoma; MUC, mucinous adenocarcinoma; ER, oestrogen receptor; PR, progesterone receptor; Her2/NEU, human epidermal growth factor receptor 2; H&E, Hematoxylin and Eosin.