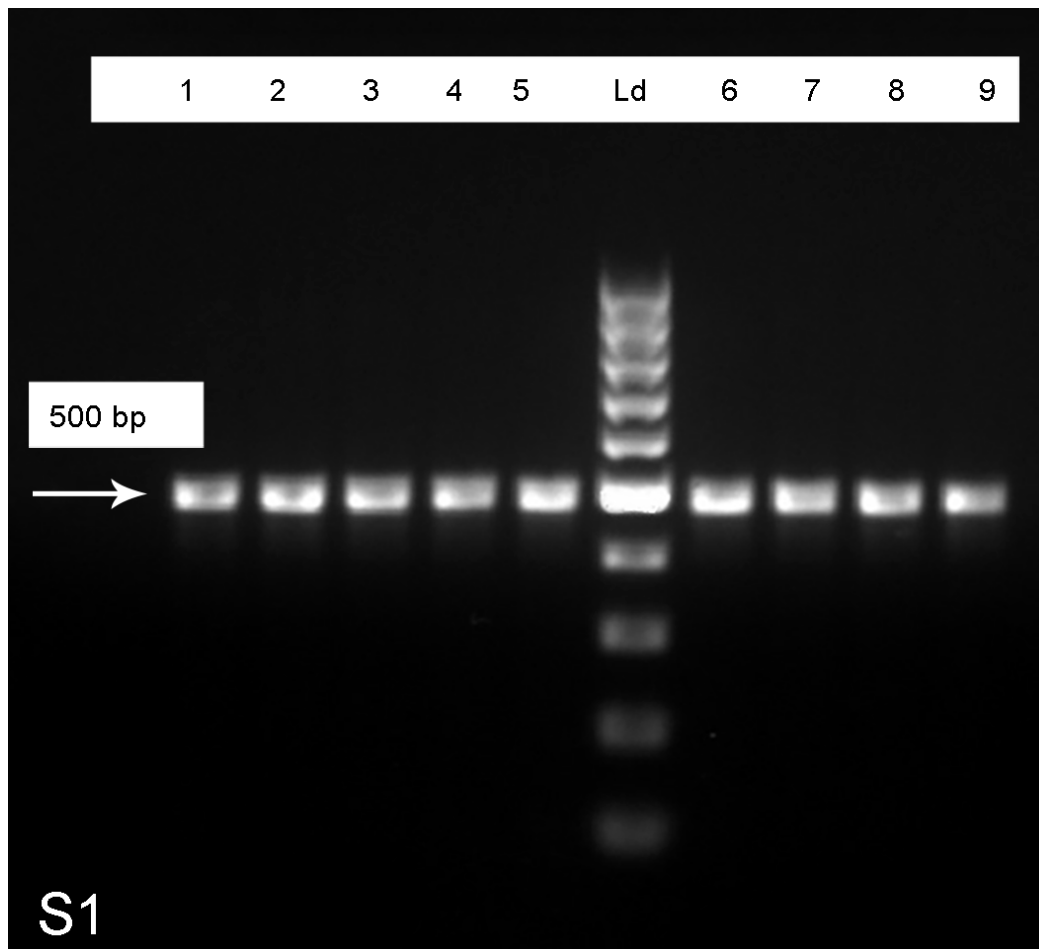


Veterinary Pathology: Supplemental Materials.

Pagano et al. Muscular sarcocystosis in sheep associated with lymphoplasmacytic myositis and expression of major histocompatibility complex class I and II.

Supplemental Table S2: The row data are reported in the table. **Cyst number** (cysts/cm²). indicate the number of cysts per cm². **Atrophy score.** The fiber atrophy was scored based on assessment of 100 fibers at 200X magnification: mild (score 1), <10% atrophic fibers; moderate (score 2), 10% to 50% atrophic fibers; and severe (score 3), >50% of atrophic fibers. **Lymphoplasmacytic inflammation score.** The number of lymphocytes and plasma cells were scored based on light microscopy: no infiltration (score 0); mild infiltration (score 1), 5 to 25 lymphocytes/plasma cells per high-power field (HPF) (400X); moderate infiltration (score 2), 26 to 50 lymphocytes/plasma cells per HPF; and severe infiltration (score 3), more than 50 lymphocytes/plasma cells per HPF. **MHC I immunopositivity score and MHC II immunopositivity score.** The percentage of muscle fibers with sarcolemmal positivity to major histocompatibility complex I and II (MHC I and II) were scored as follows: absent/none (score 0), 0%; mild (score 1), 1% to 25%; moderate (score 2), 26% to 50%; and severe (score 3), more than 50%. **MHC I positive Cysts** (cysts/cm²). Indicate the number of MHC I positive cysts per cm². **DYS 1 positive cysts** (cysts/cm²). Indicate the number of DYS 1 positive cysts per cm². **Inflammation score.** Is the sum of Lymphoplasmacytic inflammation score, MHC I immunopositivity score and MHC II immunopositivity score.

Case number	Cyst number (cysts/cm ²)	Atrophy score	Lymphoplasmacytic inflammation score	MHC I immunopositivity score	MHC II immunopositivity score	MHC I positive Cysts (cysts/cm ²)	Dys 1 positive cysts (cysts/cm ²)	Inflammation score
1	9	1	0	2	2	0	0	4
2	7	2	0	1	1	0	0	2
3	3	1	0	0	0	0	0	0
4	11	0	0	2	1	0	0	3
5	15	1	0	2	2	5	0	4
6	9	0	0	1	1	0	0	2
7	10	1	0	1	1	4	0	2
8	1	1	0	2	2	0	0	4
9	13	1	0	3	2	0	0	5
10	0	1	0	0	0	0	0	0
11	4	0	0	1	1	0	0	2
12	10	1	0	1	1	5	0	2
13	7	1	0	1	1	0	0	2
14	60	2	0	2	1	1	1	3
15	17	0	0	2	2	2	2	4
16	2	2	0	1	1	0	0	2
17	8	0	0	1	1	3	0	2
18	3	0	0	1	1	1	0	2
19	5	1	0	2	2	2	0	4
20	32	2	0	2	2	12	1	4
21	3	1	0	1	1	2	0	2
22	8	2	0	1	1	3	0	2
23	6	0	0	1	1	3	0	2
24	20	1	1	3	1	13	2	5
25	23	1	1	2	3	10	2	6
26	4	2	1	2	2	0	0	5
27	16	1	1	2	1	5	0	4
28	9	1	1	2	1	5	0	4
29	4	1	1	1	1	2	0	3
30	10	1	1	3	3	4	0	7
31	18	2	1	3	3	12	3	7
32	8	1	1	2	2	3	0	5
33	10	1	1	2	2	4	0	5
34	13	1	1	2	2	4	0	5
35	7	1	1	2	2	4	0	5
36	8	0	1	2	2	5	0	5
37	26	1	1	2	3	11	0	6
38	23	2	1	1	1	14	0	3
39	2	1	1	1	1	0	0	3
40	19	2	1	2	2	15	2	5
41	26	2	1	1	0	2	0	2
42	4	2	1	1	1	1	0	3
43	8	2	1	1	1	12	0	3
44	28	2	1	3	3	15	0	7
45	4	2	1	2	2	0	0	5
46	15	2	1	2	2	4	0	5
47	21	2	1	1	1	10	0	3
48	2	1	1	2	2	0	0	5
49	2	0	1	1	1	0	0	3
50	7	1	1	1	1	0	0	3
51	1	1	1	2	3	0	0	6
52	4	1	1	2	2	0	0	5
53	17	1	1	3	3	10	4	7
54	10	1	1	3	2	4	0	6
55	2	2	1	2	1	0	0	4
56	10	1	2	3	2	3	0	7
57	0	0	2	1	1	0	0	4
58	4	2	2	1	1	0	1	4
59	1	1	2	3	3	0	0	8
60	22	1	2	3	2	9	3	7
61	20	1	2	1	1	8	3	4
62	9	1	2	2	1	8	0	5
63	35	1	2	1	2	13	3	5
64	22	0	2	1	1	15	2	4
65	2	2	2	2	1	2	0	5
66	7	2	2	2	1	2	0	5
67	70	1	2	3	2	30	10	7
68	6	3	2	3	2	3	0	7
69	25	3	2	3	2	12	0	7
70	11	0	2	2	2	4	0	6
71	9	2	2	2	1	7	4	5
72	30	1	2	2	1	13	4	5
73	8	1	2	3	3	7	0	8
74	15	1	2	3	1	10	0	6
75	9	2	2	1	1	6	0	4
76	18	2	3	3	3	17	1	9
77	58	1	3	3	3	32	11	9
78	6	1	3	2	1	6	0	6



Supplemental Figure S1: Cases 1-9. Electrophoresis of PCR for *Sarcocystis* 18S rRNA gene. A band of 500 bp (arrow) was obtained for all the samples analyzed.