

## **Supplementary information**

### **CircHECTD1 Mediates Pulmonary Fibroblast Activation Via HECTD1**

Authors: Chu, Wang, Luo, Zhang, Cheng, Wang, Dai, Yao, Zhu and Chao

#### **Table of Contents**

Supplementary Figure S1	2
Supplementary Figure S2	3
Supplementary Figure S3	4
Supplementary Figure S4	5
Supplementary Figure S5	6
Supplementary Figure S6	7

### Supplementary Figure S1

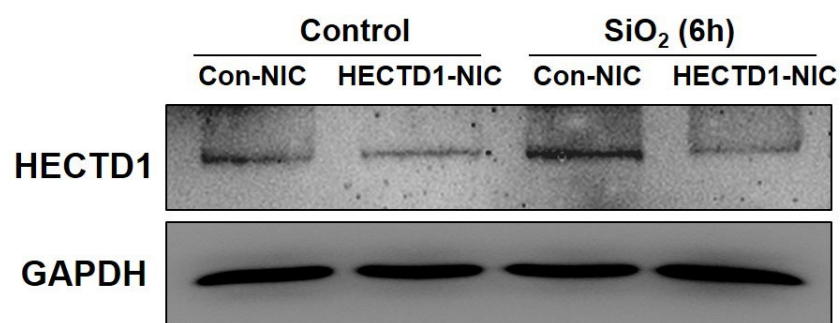
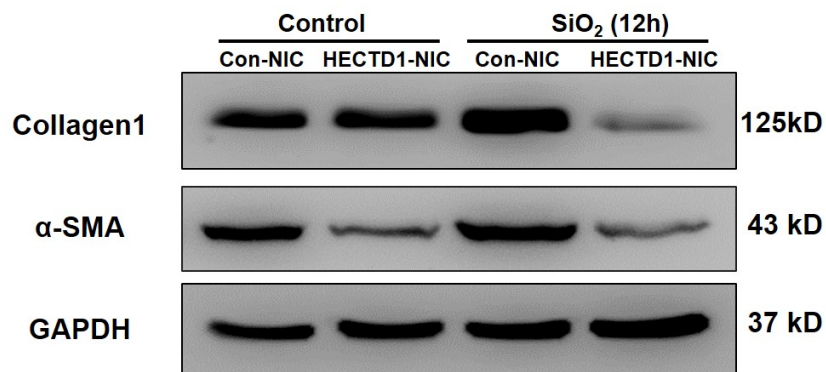


Fig. S1. Representative western blot showing the effects of HECTD1 knockdown via HECTD1-NIC on HECTD1 protein expression.

## Supplementary Figure S2

**A.**



**B.**

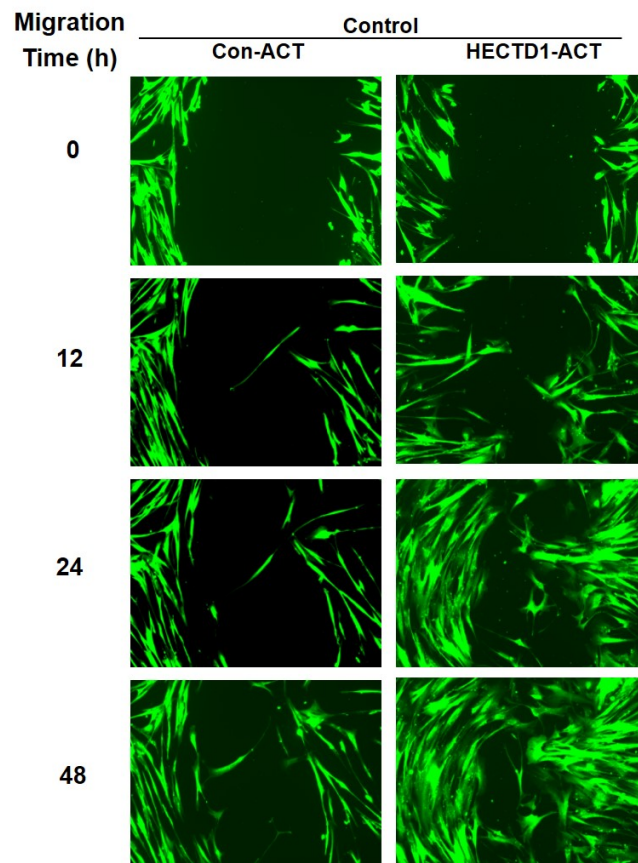


Fig. S2. A. Representative western blot showing the effects of HECTD1 knockout on the SiO<sub>2</sub>-induced expression of collagen1 and α-SMA in HPF-a cells at 12 h following 50 μg/cm<sup>2</sup> SiO<sub>2</sub> treatment. B. Representative images showing the HECTD1-ACT-induced increase in cell migration using a scratch assay. Scale bar=50 μm.

### Supplementary Figure 3

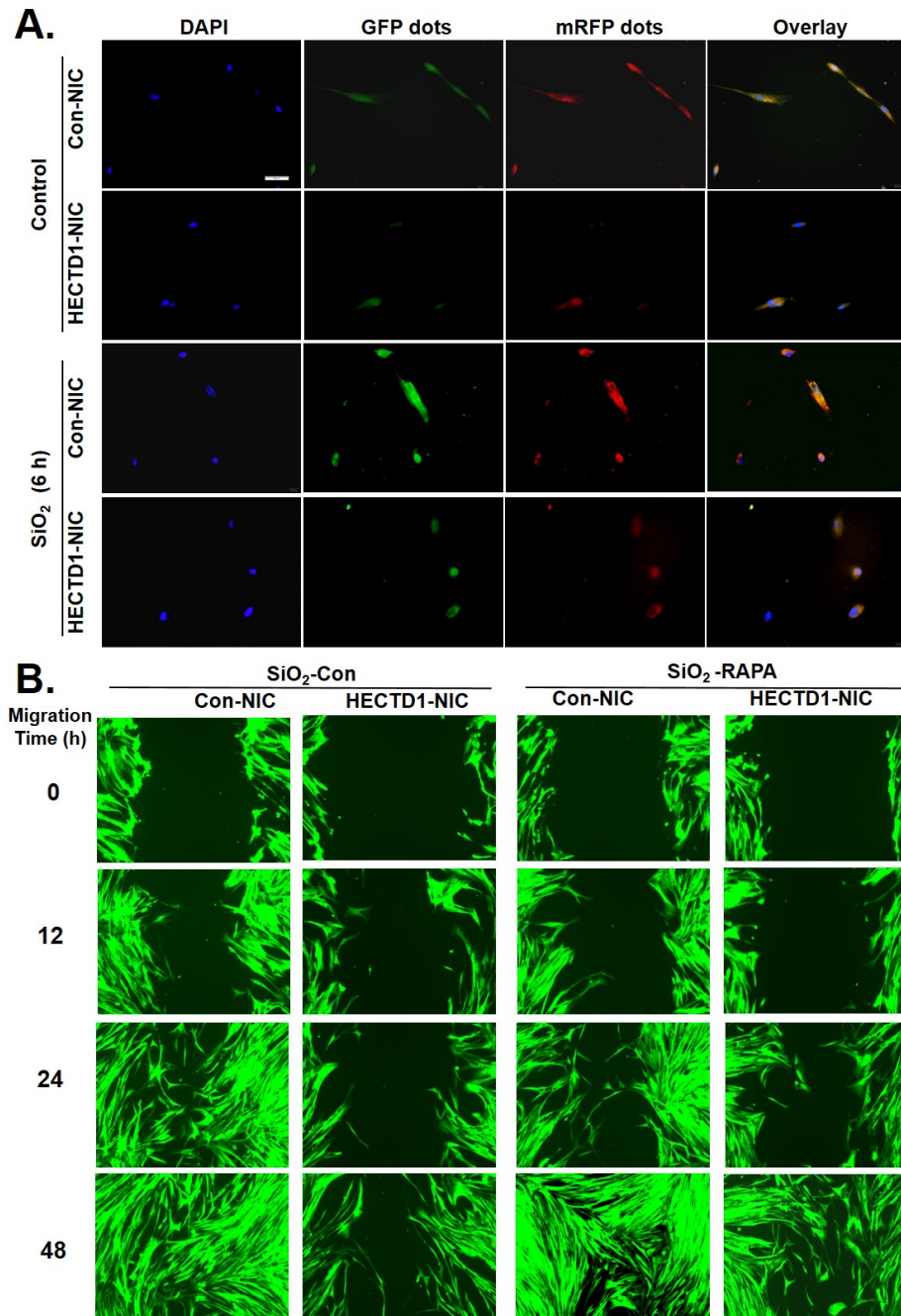


Fig. S3. A. Representative images showing the effects of HECTD1-NIC on the formation of RFP- and GFP-MAP1LC3 puncta. Scale bar=20  $\mu$ m. B. Representative images showing that HECTD1 knockdown-induced cell migration inhibition was reversed by pretreatment with rapamycin with SiO<sub>2</sub> treatment. Scale bar= 50  $\mu$ m.

### Supplementary Figure S4

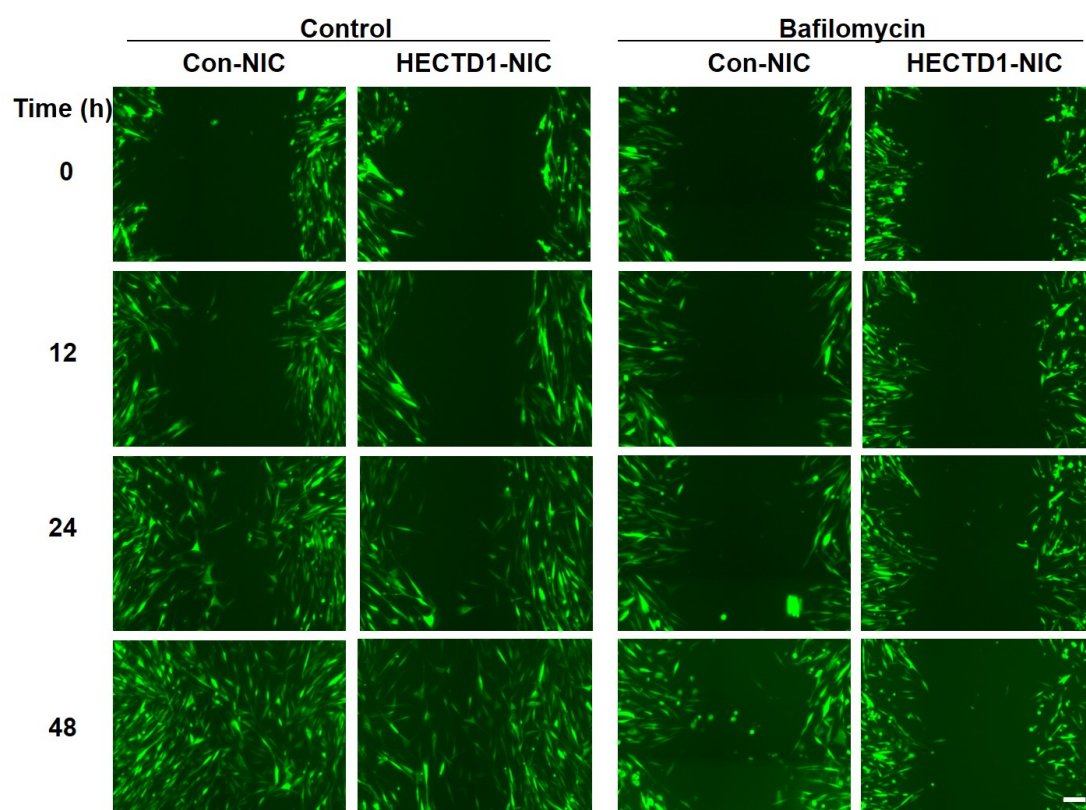


Fig. S4. Representative images showing that HECTD1 knockdown-induced cell migration inhibition was reversed by pretreatment with bafilomycin. Scale bar= 50  $\mu$ m.

**Supplementary Figure S5**

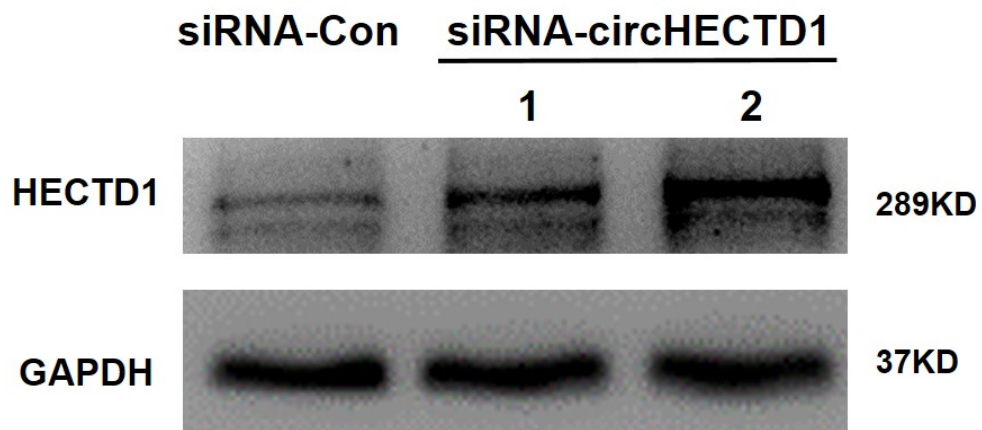


Fig. S5. Representative western blot showing the effect of specific knockdown of circHECTD1 via siRNA on HECTD1 expression.

## Supplementary Figure S6

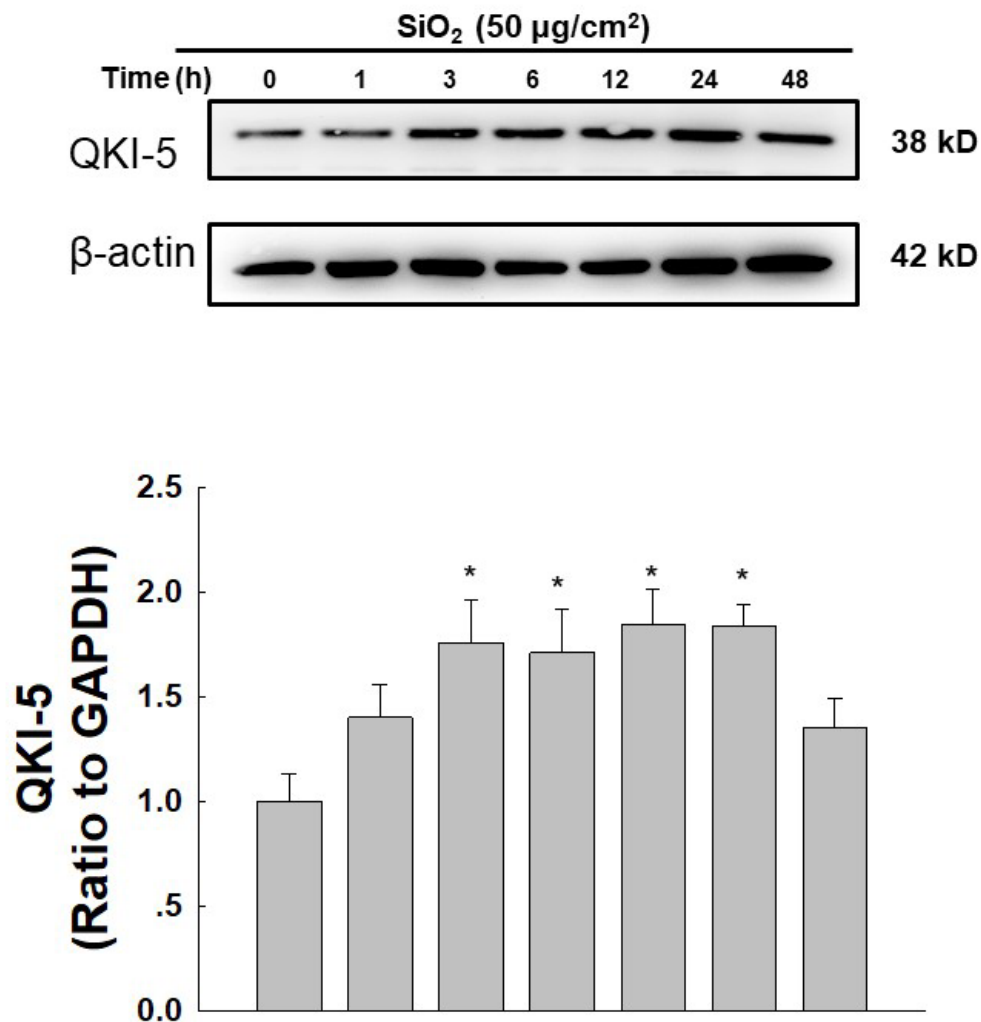


Fig. S6. A. Representative western blot showing the effects of SiO<sub>2</sub> (50 µg/cm<sup>2</sup>) on the expression of QKI-5 in HPF-a cells. B. Densitometric analyses of five separate experiments suggested that SiO<sub>2</sub> induced increases in QKI-5 expression. \**P*<0.05 vs. 0 h.