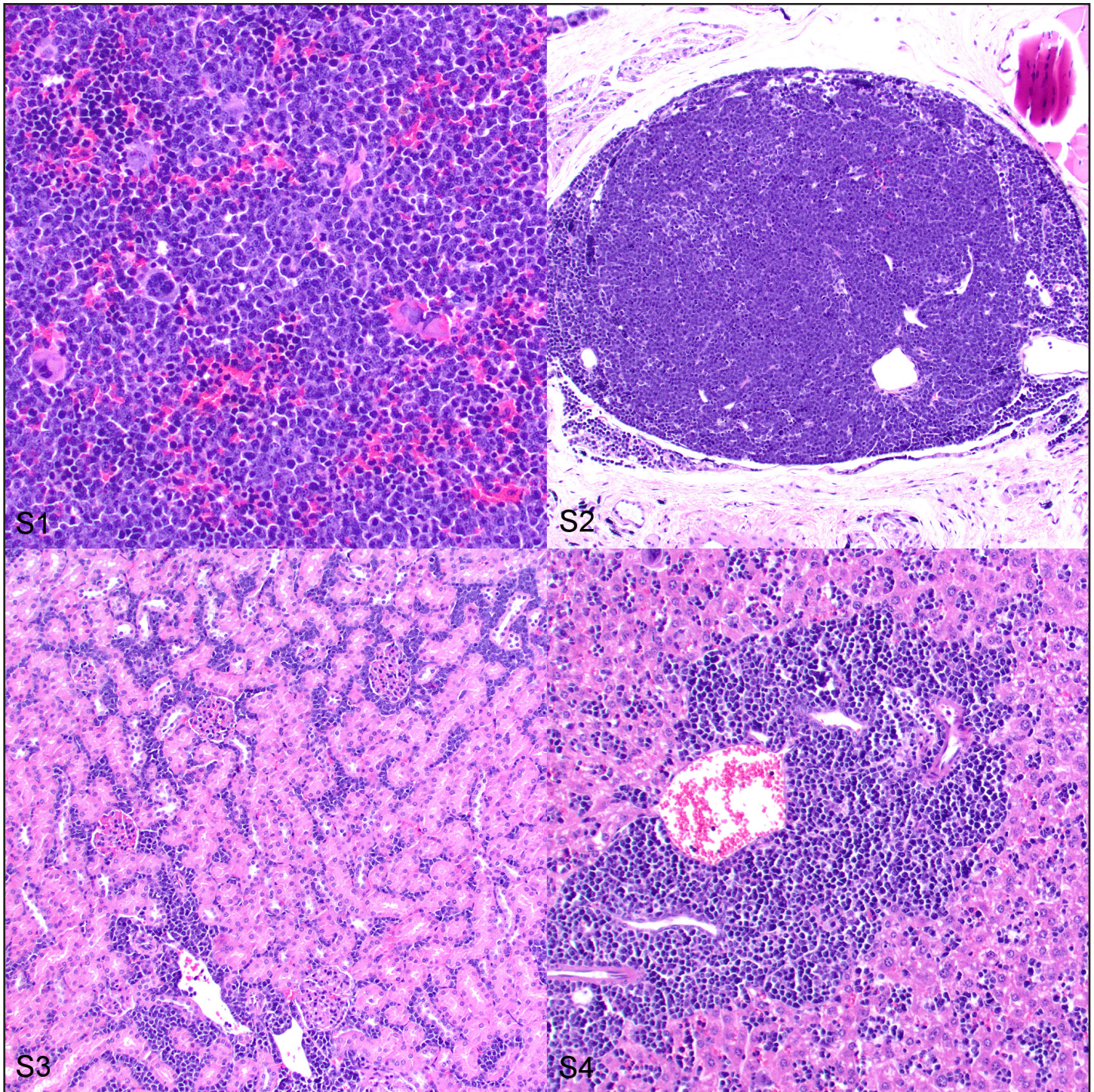


Veterinary Pathology: Supplemental Materials.
Tillman et al. Morphologic And Immunohistochemical Characterization
Of Spontaneous Lymphoma/Leukemia In NSG Mice.



Figs. S1-S4. Multicentric T-cell lymphoblastic lymphomas/leukemias in NSG mice. Figure 1S. Spleen, case 11. Medium-sized lymphocytes expand rudimentary follicular regions and infiltrate the red pulp. HE. Figure 2S. Cervical lymph node, case 8. Rudimentary lymph nodes are markedly expanded and effaced by neoplastic lymphocytes. HE. Figure 3S. Kidney, case 8. Neoplastic lymphocyte infiltrates in the renal interstitium. HE. Figure 4S. Liver, case 10. Infiltrative neoplastic lymphocytes are present throughout the sinusoids and in the portal tracts. HE.