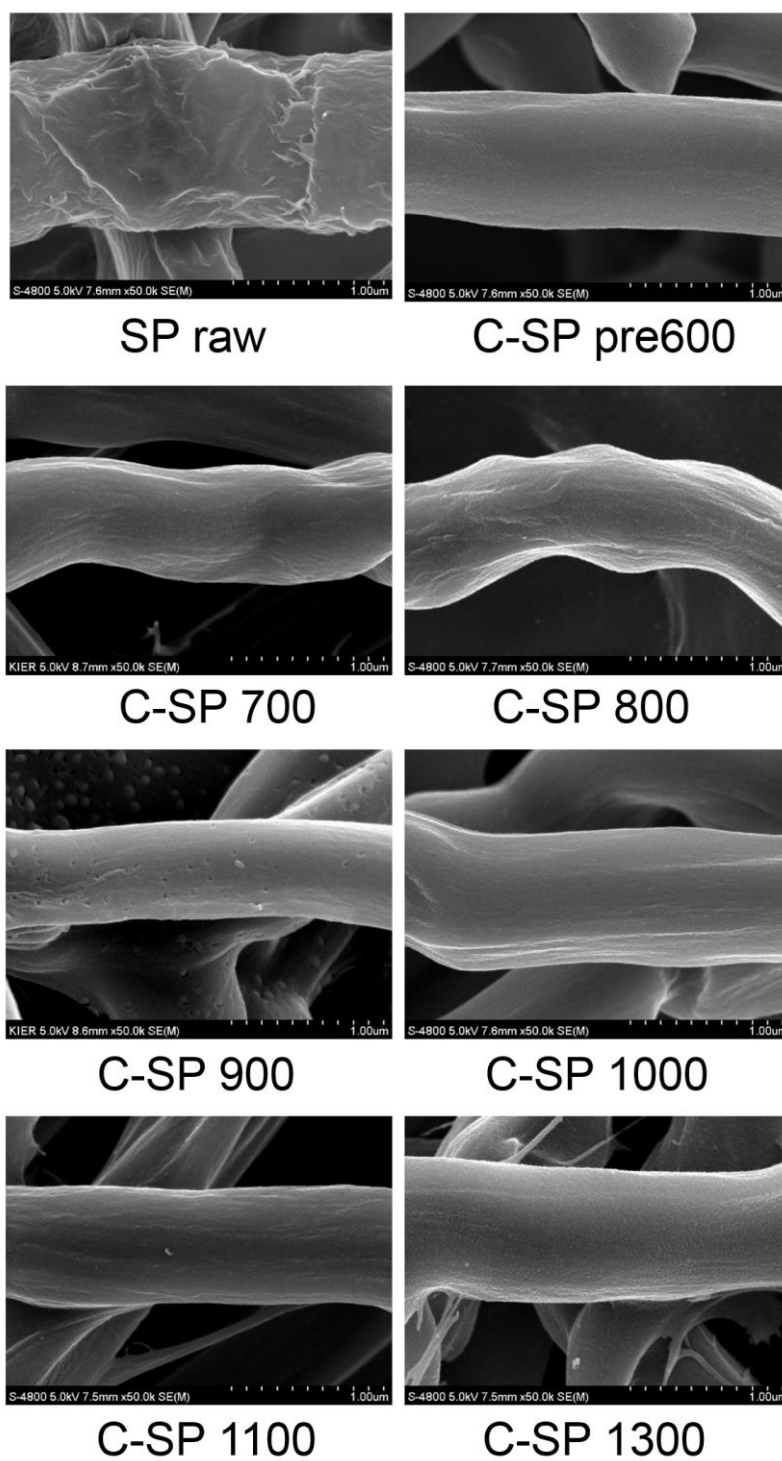
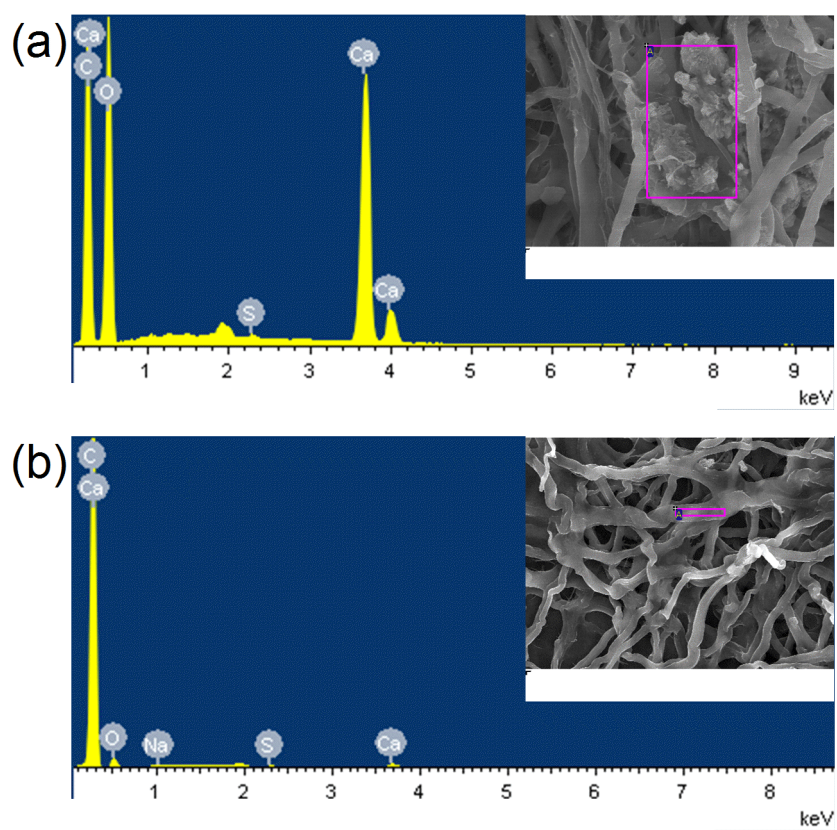


# **Supplemental Materials**

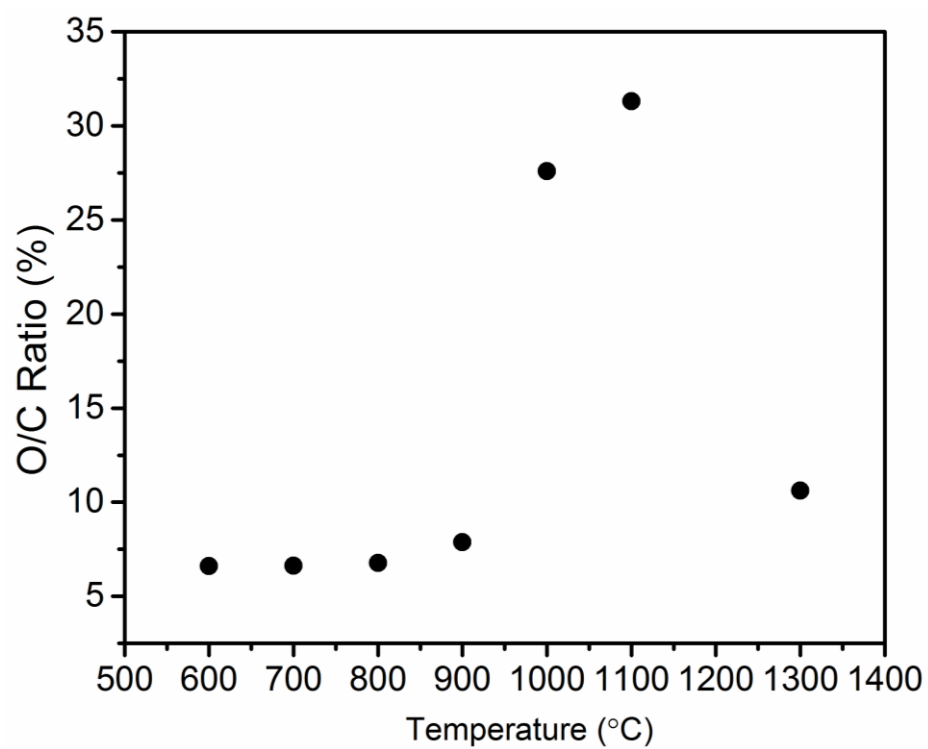
**Seaweed Biomass Waste-Derived Carbon as an Electrode  
Material for Supercapacitor**



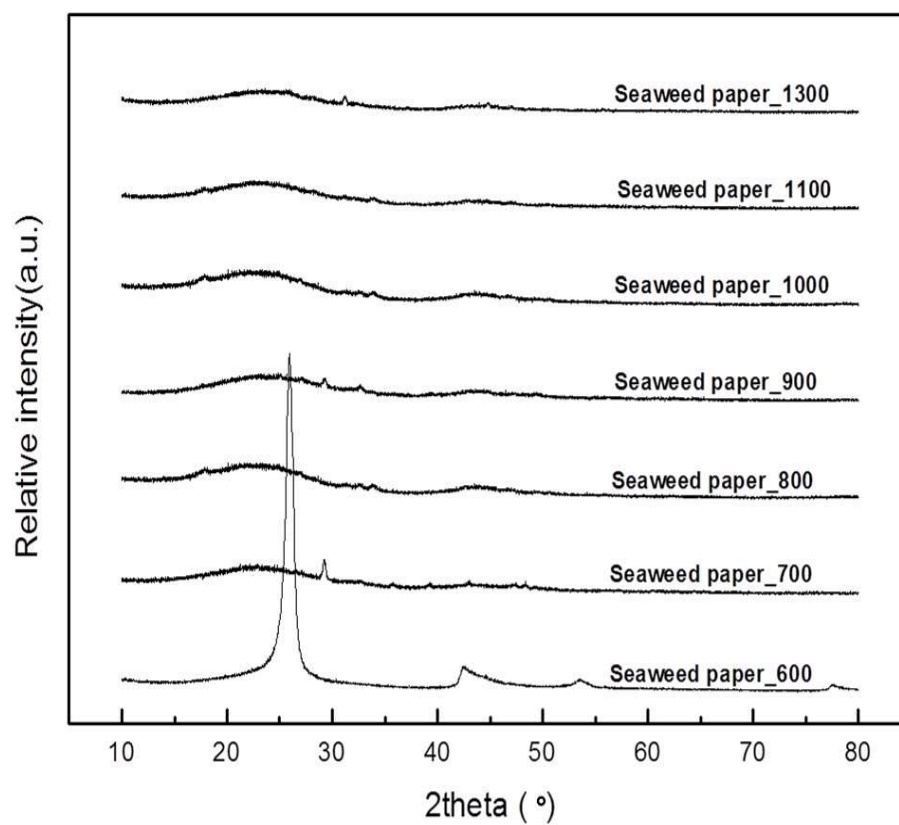
**Figure S1.** SEM images of carbonised seaweed paper (C-SP) at 700, 800, 900, 1000, 1100, 1300 °C.



**Figure S2.** EDX spectra of (a) raw seaweed paper and (b) seaweed paper carbonised at 1300 °C



**Figure S3.** O/C ratio (%) of C-SPs carbonised at various temperatures.



**Figure S4.** XRD spectrum of seaweed sample at increasing carbonisation temperatures.