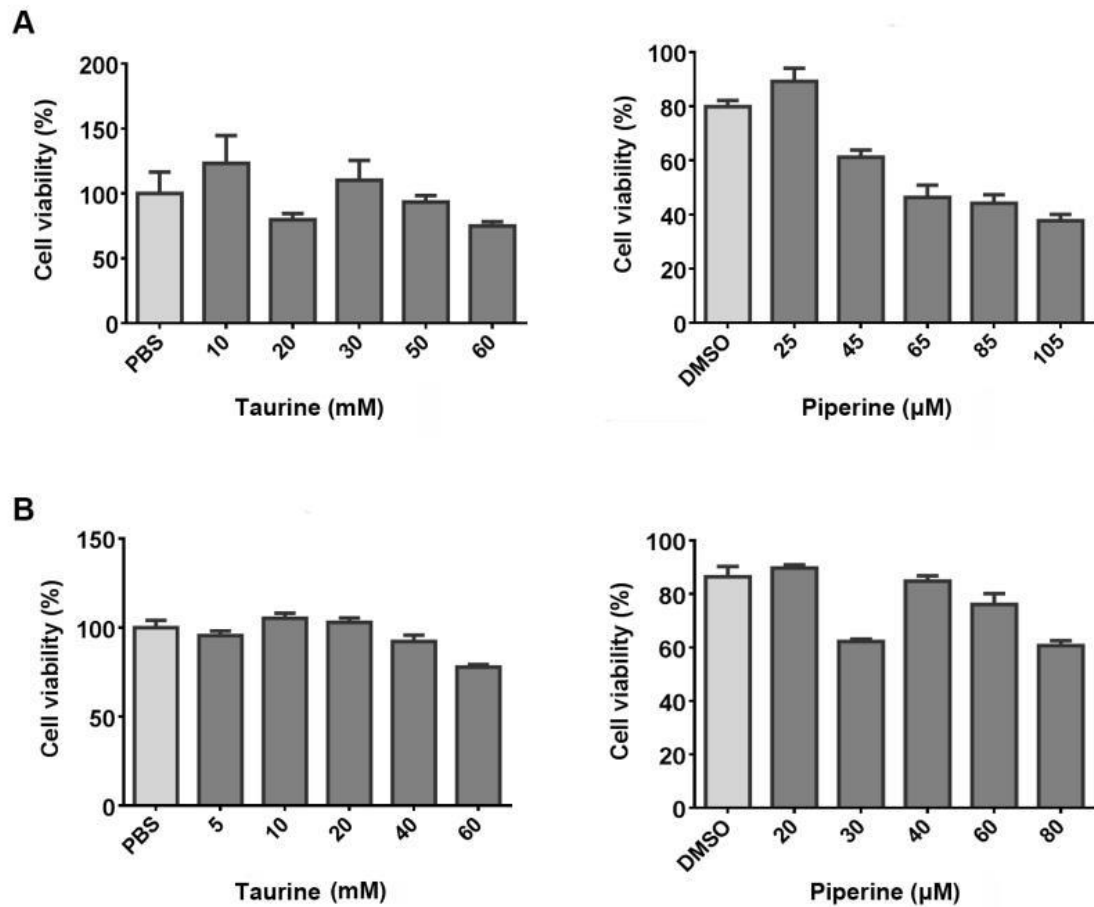
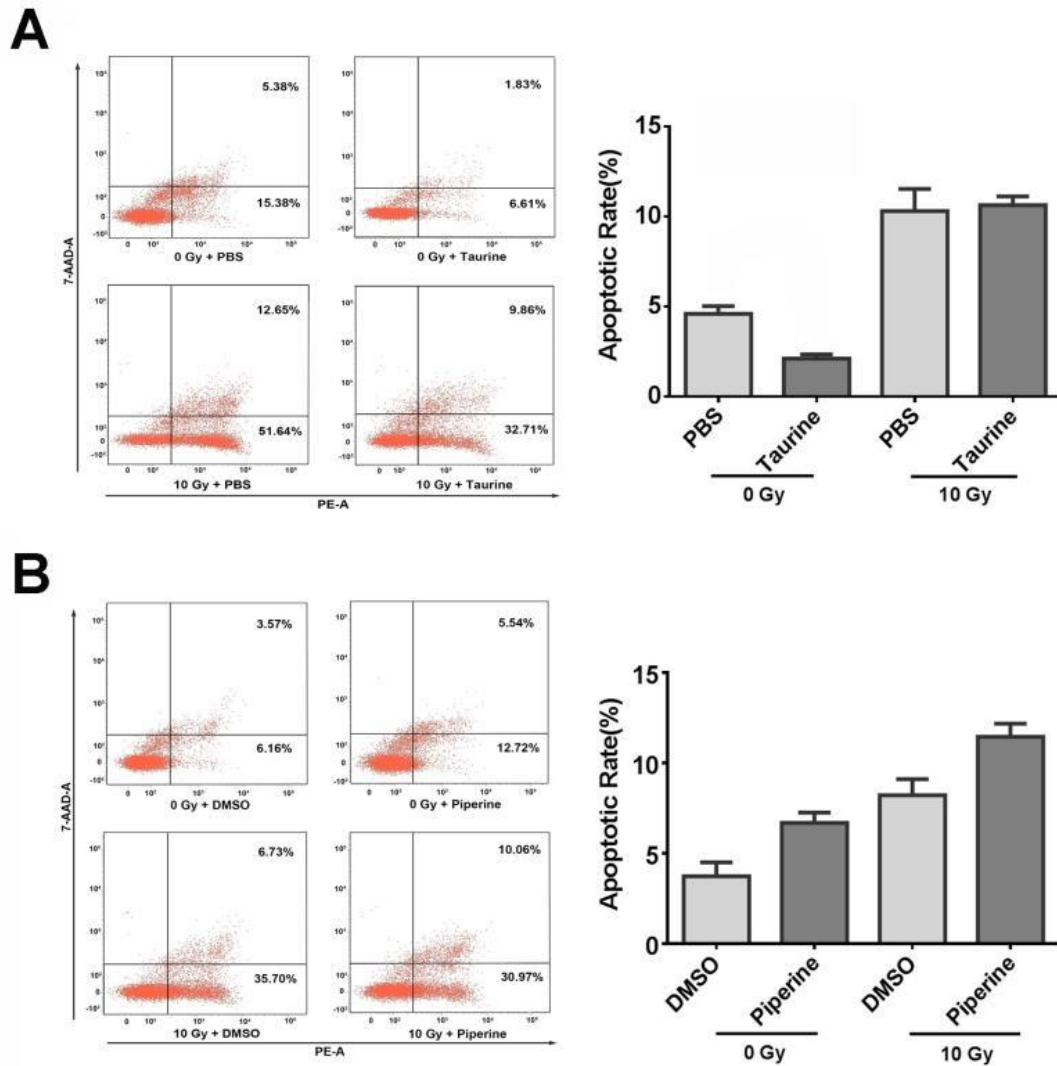


Supplementary figures and figure legends



Supplementary Figure 1. The effect of taurine and piperine on the viability of HELF cells.

(A) HELF cells were treated with taurine (10–60 mM), piperine (25–105 μ M), or DMSO (vehicle control) for 24 h and cell viability was measured using an MTT assay. (B) HELF cells were treated with taurine (5–60 mM), piperine (20–80 μ M), or DMSO (vehicle control) for 48 h and cell viability was measured using an MTT assay.



Supplementary Figure 2. The effect of taurine and piperine on the radiation-induced cell apoptosis of HELF cells.

(A) **Cell apoptosis assay.** HELF cells were pretreated with taurine (10 mM) followed by 10 Gy ionizing radiation. (B) **Cell apoptosis assay.** HELF cells were pretreated with piperine (30 μ M) followed by 10 Gy ionizing radiation.