

Supplementary materials

Phenylspirodrimane derivatives from cultures of the fungus *Stachybotrys chartarum* YIM DT 10079

^a *Key Laboratory for Microbial Resources, Ministry of Education, Yunnan Institute of Microbiology, Yunnan University, Kunming 650091, P. R. China*

^b *Engineering and Technology Research Center of Liupanshan Resources, College of Chemistry and Chemical Engineering, Ningxia Normal University, Guyuan 756000, P. R. China*

^c *School of Chemical Biology and Environment, Yuxi Normal University, Yuxi 653100, P. R. China*

^d *BioBioPha Co., Ltd., Kunming 650201, P. R. China*

dingjh_nx@126.com; f.wang@mail.biobiopha.com; hudongbao@126.com; mlwen@ynu.edu.cn.

Note

1. These authors contributed equally to this work and should be considered as co-first authors.

Supplemental file (Figure) Legend

Figure S1. ^1H -NMR spectrum of Compound **1**

Figure S2. ^{13}C -NMR spectrum of Compound **1**

Figure S3. The HSQC spectrum of Compound **1**

Figure S4. The ^1H - ^1H COSY spectrum of Compound **1**

Figure S5. The HMBC spectrum of Compound **1**

Figure S6. The ROESY spectrum of Compound **1**

Figure S7. HRESIMS spectrum of Compound **1**

Figure S8. The UV spectrum of Compound **1**

Figure S9. The IR spectrum of Compound **1**

10.000
7.500
7.300
7.100
6.900
6.700
6.500
6.300
6.100
5.900
5.700
5.500
5.300
5.100
4.900
4.700
4.500
4.300
4.100
3.900
3.700
3.500
3.300
3.100
2.900
2.700
2.500
2.300
2.100
1.900
1.700
1.500
1.300
1.100
0.900
0.700
0.500
0.300
0.100

0.3194
4.23123
4.0991
4.0026
3.9389
3.8581
3.8055
3.7499
3.6918
3.6314
3.5722
3.5124
3.4533
3.3940
3.3347
3.2751
3.2151
3.1555
3.0955
3.0352
2.9748
2.9143
2.8537
2.7932
2.7326
2.6719
2.6111
2.5502
2.4893
2.4283
2.3672
2.3061
2.2449
2.1834
2.1218
2.0601
1.9983
1.9364
1.8744
1.8123
1.7501
1.6878
1.6254
1.5629
1.5003
1.4376
1.3748
1.3119
1.2489
1.1858
1.1226
1.0593
1.0000
0.9366
0.8731
0.8095
0.7458
0.6820
0.6181
0.5541
0.4900
0.4259
0.3617
0.2974
0.2331
0.1688
0.1045
0.0402
0.0000

Current Data Parameters
NAME: m1275
EXPNO: 1
PROCNO: 1
F2 - Acquisition Parameters
Date_: 20150414
Time: 00:30
INSTRUM: spect
PROBHD: 5 mm QNP 1H/13
PULPROG: zgpg30
TD: 65536
SOLVENT: CDCl3
NS: 4096
DS: 4
SWH: 7180.908 Hz
FIDRES: 0.109018 Hz
AQ: 0.161600 sec
RG: 139
SN: 60 600 uspc
SFO: 100.626130 MHz
TE: 290.2 K
D1: 1.0000000 sec
DELTA: 0.0000000 sec
NUC1: 13C
NUC2: 1H
===== CHANNEL f1 =====
MAG1: 1H
P1: 12.00 usec
PL1: -1.00 dB
SFO1: 400.1321113 MHz
F2 - Processing parameters
SI: 32768
SF: 400.1321113 MHz
WDW: EM
SSB: 0
LB: 0.30 Hz
GB: 0
PC: 2.00
TD: 65536
FIDRES: 0.109018 Hz
AQ: 0.161600 sec
RG: 139
SN: 60 600 uspc
SFO: 100.626130 MHz
TE: 290.2 K
D1: 1.0000000 sec
DELTA: 0.0000000 sec
NUC1: 13C
NUC2: 1H
===== CHANNEL f2 =====
MAG2: 13C
P2: 12.00 usec
PL2: -1.00 dB
SFO2: 101.626130 MHz
F2 - Processing parameters
SI: 32768
SF: 101.626130 MHz
WDW: EM
SSB: 0
LB: 0.30 Hz
GB: 0
PC: 2.00
TD: 65536
FIDRES: 0.109018 Hz
AQ: 0.161600 sec
RG: 139
SN: 60 600 uspc
SFO: 101.626130 MHz
TE: 290.2 K
D1: 1.0000000 sec
DELTA: 0.0000000 sec
NUC1: 13C
NUC2: 1H

10.000
7.500
7.300
7.100
6.900
6.700
6.500
6.300
6.100
5.900
5.700
5.500
5.300
5.100
4.900
4.700
4.500
4.300
4.100
3.900
3.700
3.500
3.300
3.100
2.900
2.700
2.500
2.300
2.100
1.900
1.700
1.500
1.300
1.100
0.900
0.700
0.500
0.300
0.100

0.3194
4.23123
4.0991
4.0026
3.9389
3.8581
3.8055
3.7499
3.6918
3.6314
3.5722
3.5124
3.4533
3.3940
3.3347
3.2751
3.2151
3.1555
3.0955
3.0352
2.9748
2.9143
2.8537
2.7932
2.7326
2.6719
2.6111
2.5502
2.4893
2.4283
2.3672
2.3061
2.2449
2.1834
2.1218
2.0601
2.0000
1.9366
1.8731
1.8095
1.7458
1.6820
1.6181
1.5541
1.4900
1.4259
1.3617
1.2974
1.2331
1.1688
1.1045
1.0402
0.9759
0.9116
0.8473
0.7830
0.7187
0.6544
0.5901
0.5258
0.4615
0.3972
0.3329
0.2686
0.2043
0.1400
0.0757
0.0114
0.0000

10.000
7.500
7.300
7.100
6.900
6.700
6.500
6.300
6.100
5.900
5.700
5.500
5.300
5.100
4.900
4.700
4.500
4.300
4.100
3.900
3.700
3.500
3.300
3.100
2.900
2.700
2.500
2.300
2.100
1.900
1.700
1.500
1.300
1.100
0.900
0.700
0.500
0.300
0.100

0.3194
4.23123
4.0991
4.0026
3.9389
3.8581
3.8055
3.7499
3.6918
3.6314
3.5722
3.5124
3.4533
3.3940
3.3347
3.2751
3.2151
3.1555
3.0955
3.0352
2.9748
2.9143
2.8537
2.7932
2.7326
2.6719
2.6111
2.5502
2.4893
2.4283
2.3672
2.3061
2.2449
2.1834
2.1218
2.0601
2.0000
1.9366
1.8731
1.8095
1.7458
1.6820
1.6181
1.5541
1.4900
1.4259
1.3617
1.2974
1.2331
1.1688
1.1045
1.0402
0.9759
0.9116
0.8473
0.7830
0.7187
0.6544
0.5901
0.5258
0.4615
0.3972
0.3329
0.2686
0.2043
0.1400
0.0757
0.0114
0.0000

10.000
7.500
7.300
7.100
6.900
6.700
6.500
6.300
6.100
5.900
5.700
5.500
5.300
5.100
4.900
4.700
4.500
4.300
4.100
3.900
3.700
3.500
3.300
3.100
2.900
2.700
2.500
2.300
2.100
1.900
1.700
1.500
1.3

c13 DMSO av600

===== CHANNEL F1 =====

NAME	VALUE
SNAME	001719
EXPNO	44
FREQNO	1
INSTR	20150423
TD	3.57
INSTRUM	90001
PROBHD	5 mm CPDPC 1H-
TD	3200
SOLVENT	DMSO
NS	174
DS	39063.105 Hz
F2FREQ	6.596044 Hz
AQ	0.836070 sec
RG	1292
IN	32.803 kHz
DE	20.05 kHz
TD	320.3
Z1	3.0000000 sec
Z2	0.0300000 sec
TD	1

===== CHANNEL F2 =====

NAME	VALUE
EXPNO	18
FREQNO	80.05 kHz
INSTR	9.0001
TD	25.44 dB
INSTRUM	1.5000000 Hz
PROBHD	0.0440000 Hz
TD	600.1300000 Hz
DE	32704
TD	150.9026401 Hz
DS	3
DE	1.00 Hz
LA	0
GB	0
PC	1.40

174.18 166.08 158.18 156.08 144.26 112.49 109.80 105.45 98.27 73.38 51.87 49.21 46.07 45.07 39.93 38.63 35.43 33.07 32.99 32.72 32.54 32.34 29.64 29.44 27.35 27.15 26.94 26.74 26.54 26.34 26.14 25.94 25.74 25.54 25.34 25.14 24.94 24.74 24.54 24.34 24.14 23.94 23.74 23.54 23.34 23.14 22.94 22.74 22.54 22.34 22.14 21.94 21.74 21.54 21.34 21.14 20.94 20.74 20.54 20.34 20.14 19.94 19.74 19.54 19.34 19.14 18.94 18.74 18.54 18.34 18.14 17.94 17.74 17.54 17.34 17.14 16.94 16.74 16.54 16.34 16.14 15.94 15.74 15.54 15.34 15.14 14.94 14.74 14.54 14.34 14.14 13.94 13.74 13.54 13.34 13.14 12.94 12.74 12.54 12.34 12.14 11.94 11.74 11.54 11.34 11.14 10.94 10.74 10.54 10.34 10.14 9.94 9.74 9.54 9.34 9.14 8.94 8.74 8.54 8.34 8.14 7.94 7.74 7.54 7.34 7.14 6.94 6.74 6.54 6.34 6.14 5.94 5.74 5.54 5.34 5.14 4.94 4.74 4.54 4.34 4.14 3.94 3.74 3.54 3.34 3.14 2.94 2.74 2.54 2.34 2.14 1.94 1.74 1.54 1.34 1.14 0.94 0.74 0.54 0.34 0.14

160 150 140 130 120 110 100 90 80 70 60 50 40 30 20 10 ppm

Figure S3 HSQC (600 MHz) spectrum of compound **1**.

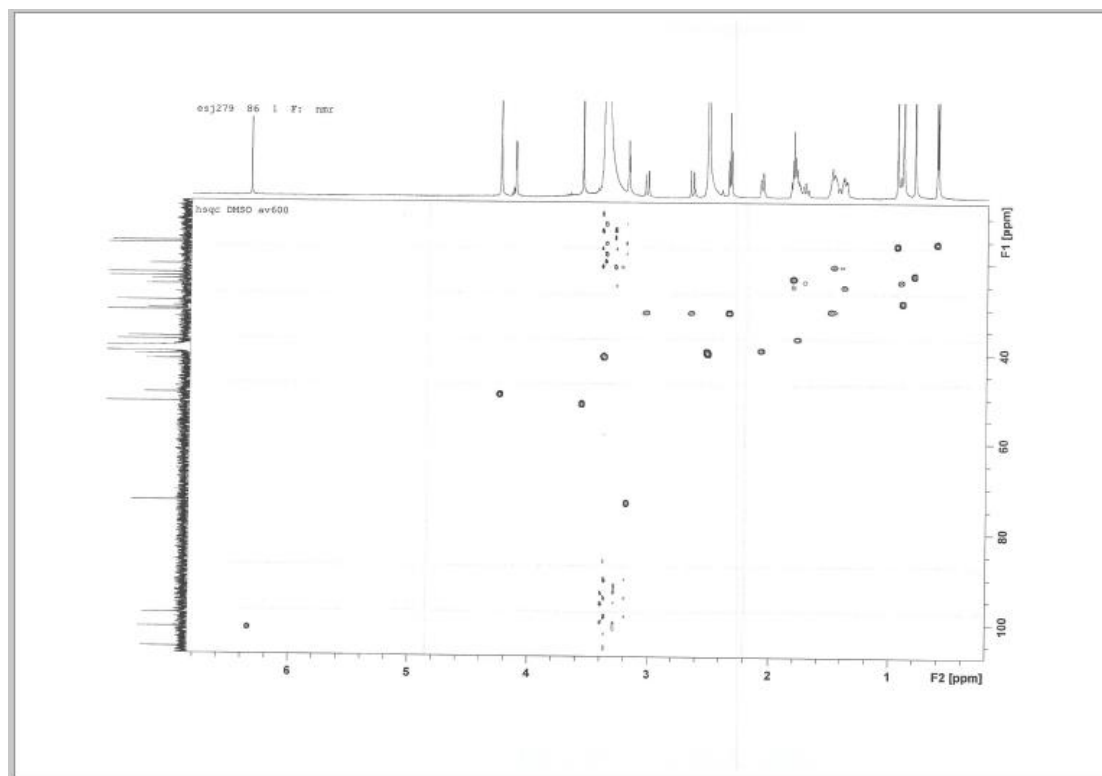


Figure S4. HMBC (600 MHz) spectrum of compound **1**.

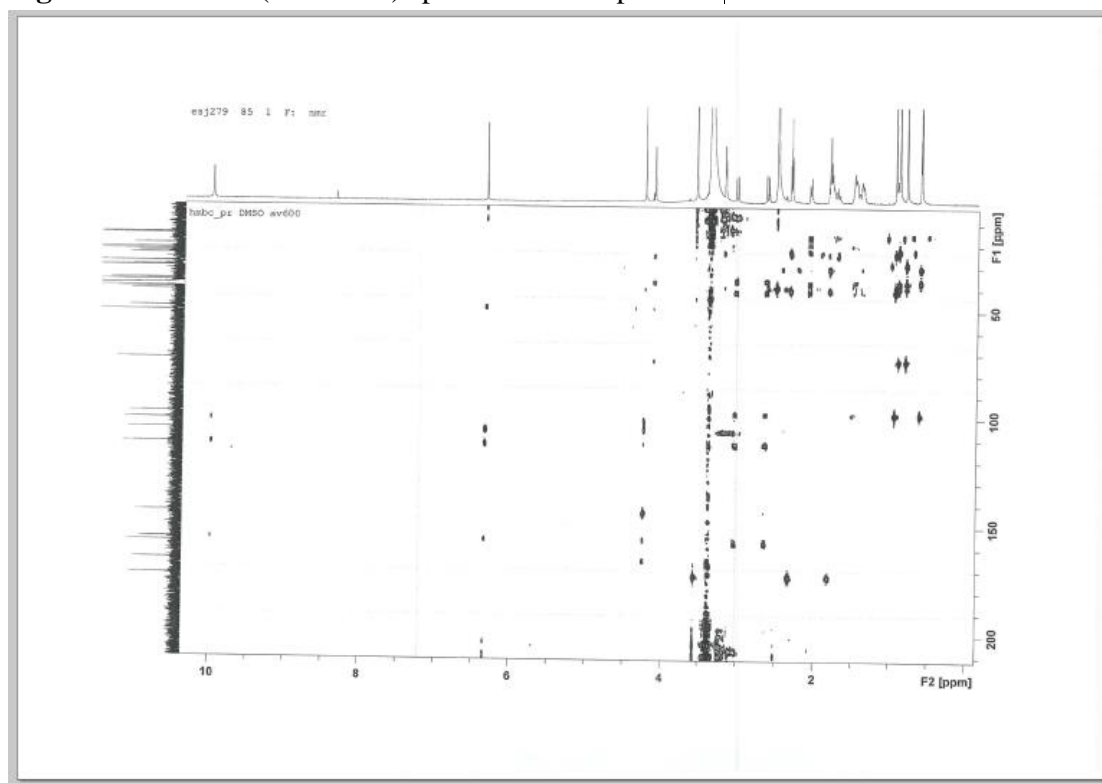


Figure S5. ^1H - ^1H COSY (600 MHz) spectrum of compound **1**.

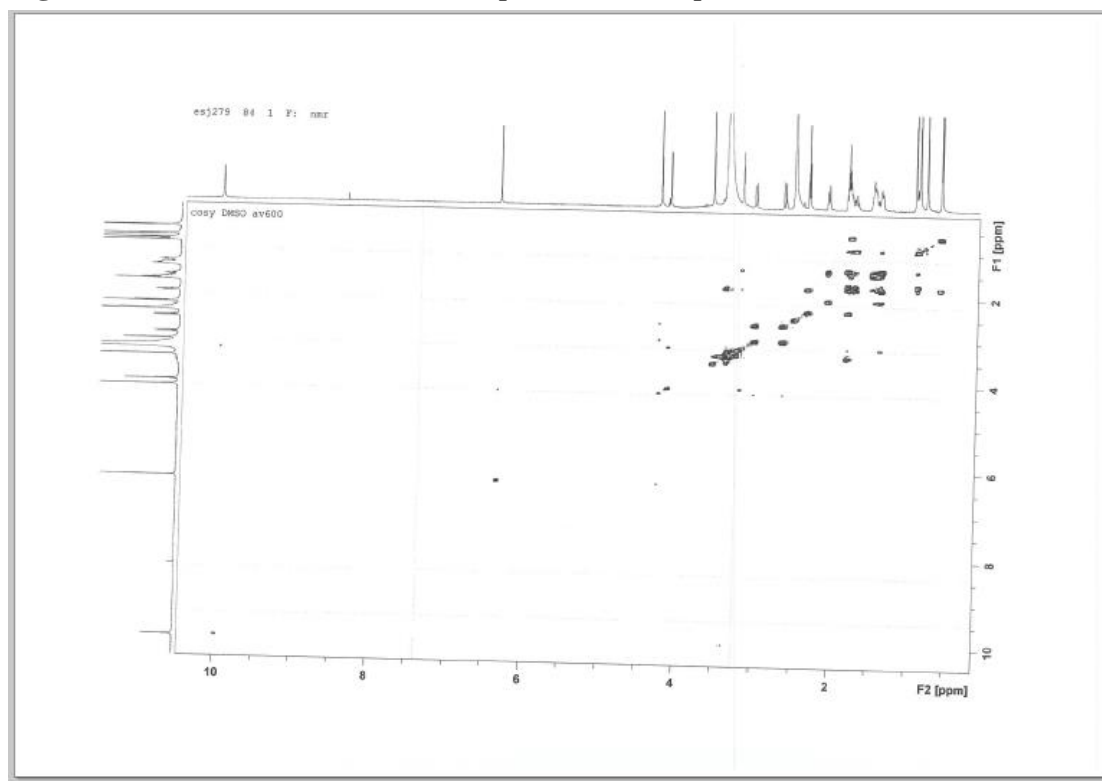


Figure S6. ROESY (600 MHz) spectrum of compound **1**.

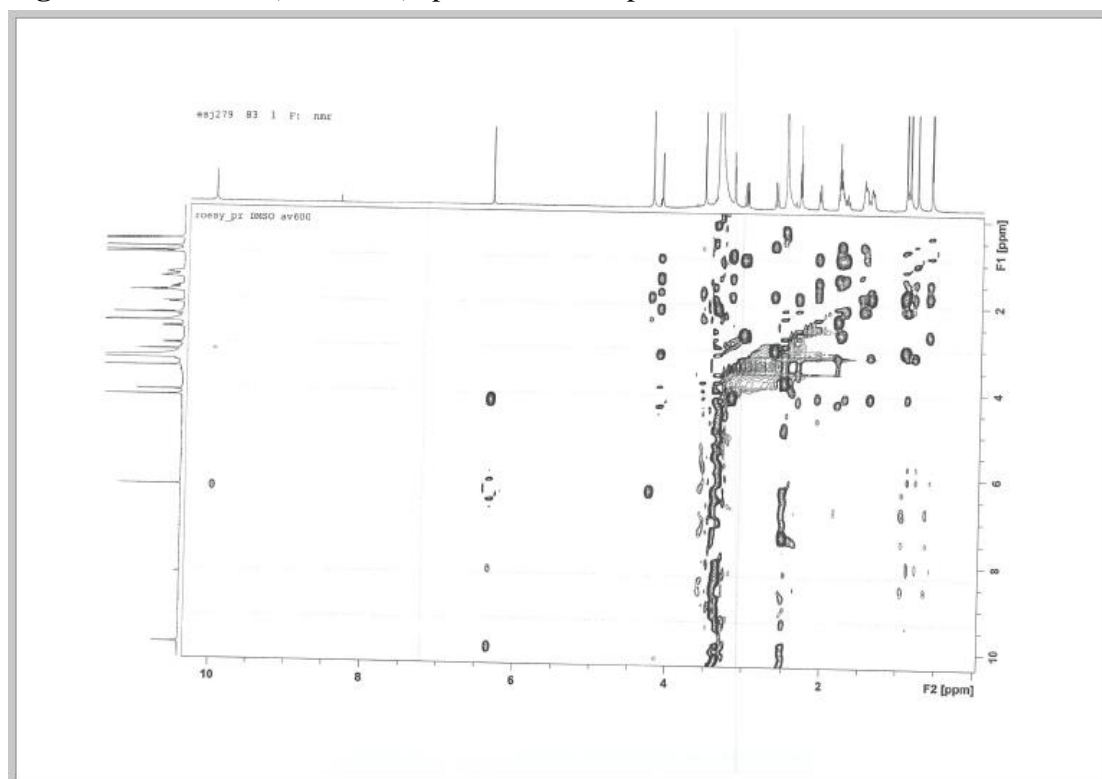


Figure S7. HREIMS spectrum of compound 1.

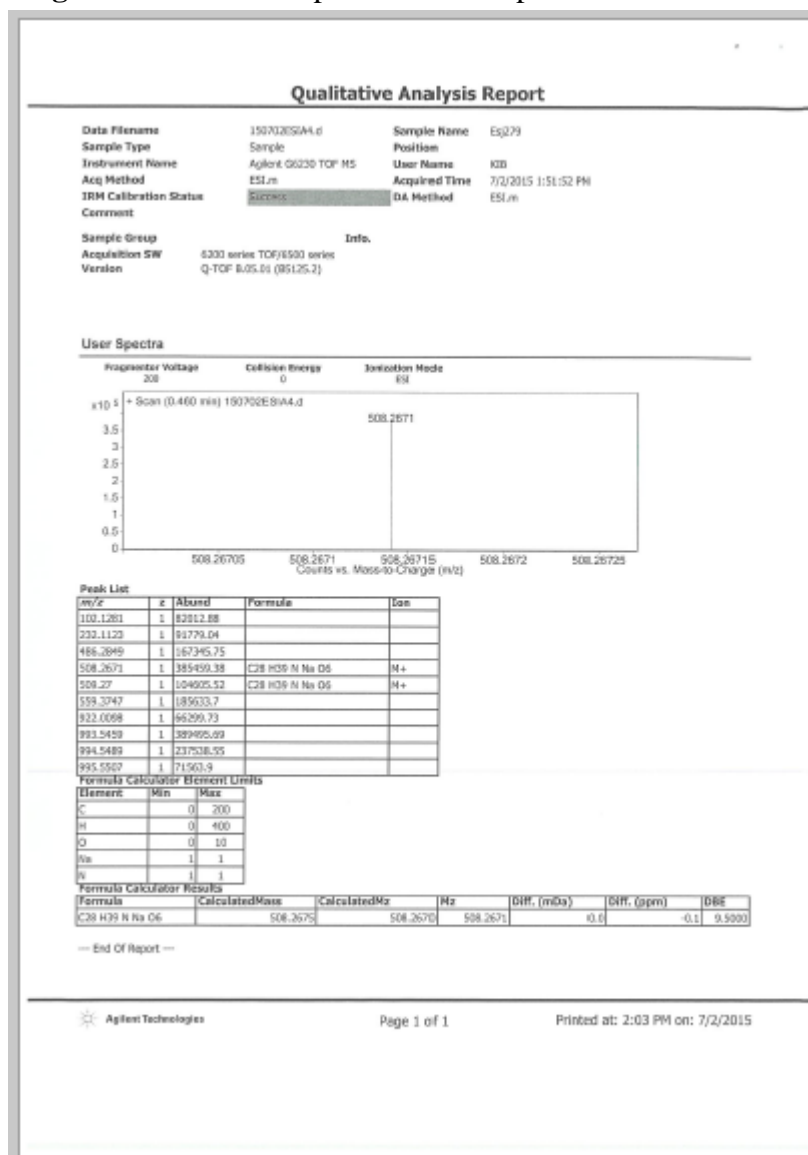


Figure S8. The UV spectrum of Compound 1

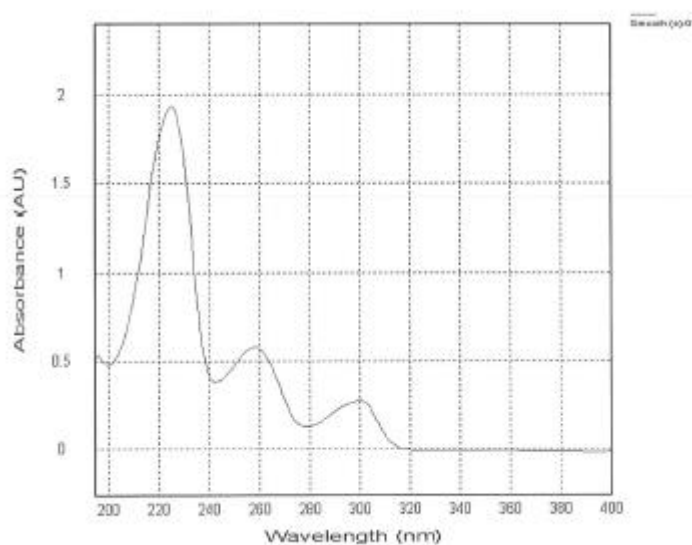


Figure S9. The IR spectrum of Compound **1**

