

Supplementary materials

Table S1. Relationship of LncRNA LSINCT5 expression and clinical variables among 30 pancreatic cancer patients.

Parameters	Number (n=30)	LncRNA LSINCT5 expression		P value
		High	Low	
Age (years)				
≤50	7	5	2	0.061
>50	23	10	13	
Menstruation				
non-menopause	10	7	3	0.331
menopause	20	9	11	
FIGO stage				
I-II	22	8	14	0.012*
III-IV	8	6	2	
Histological grade				
G1	12	3	9	0.022*
G2+G3	18	12	6	
Myometrial invasion				
<1/2	6	1	5	0.045*
≥1/2	24	15	9	
Lymphatic				
Yes	7	6	1	0.024*
No	23	9	14	

*P<0.5, the difference is significant

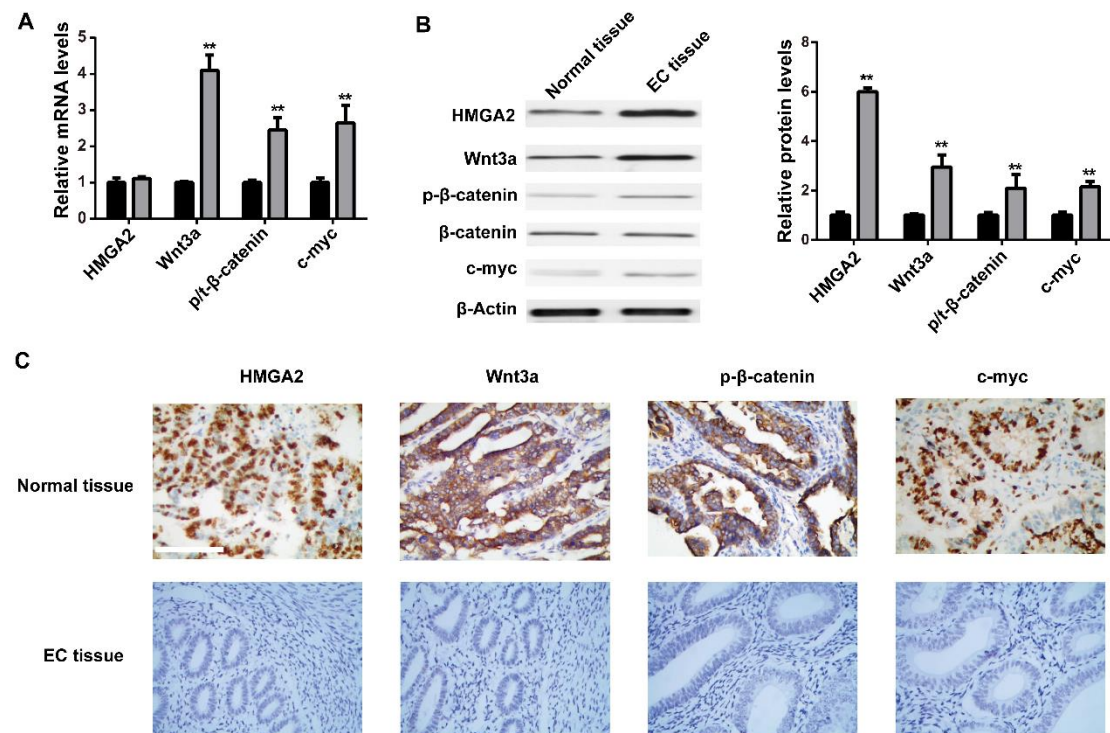


Figure S1. Relative expression of HMGA2, wnt3a, p-β-catenin and c-myc in EC tissues.

(A) The expression levels of HMGA2, wnt3a, p-β-catenin and c-myc in type 1 EC tissues and normal endometrium tissues were detected by RT-qPCR (A), western blot (B) and immunohistochemistry staining (C). The scale bar represents 100 μm, **p<0.01, compared with normal tissue group.