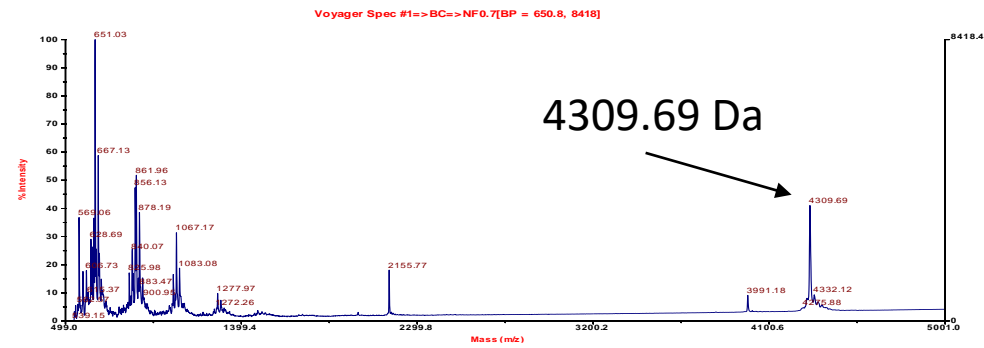
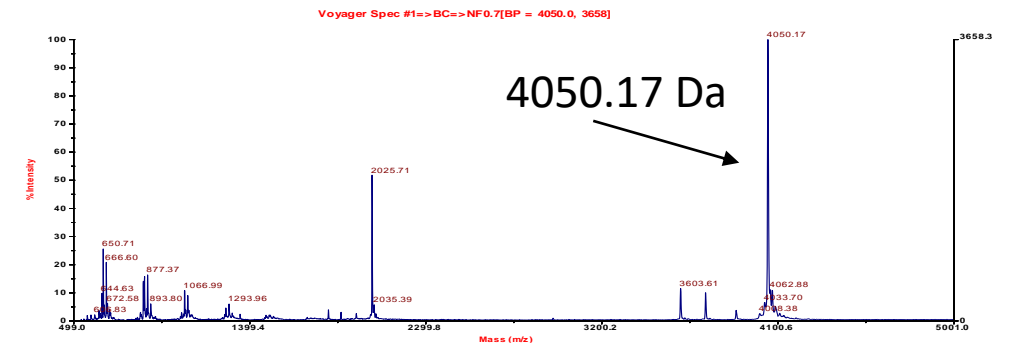


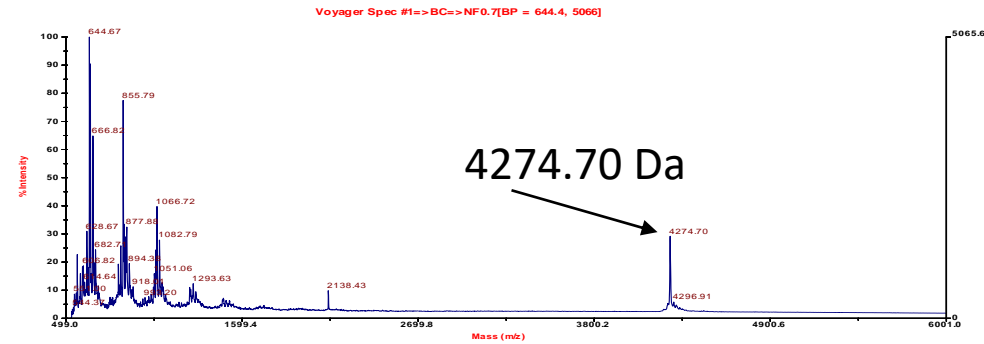
PYY(1-36)



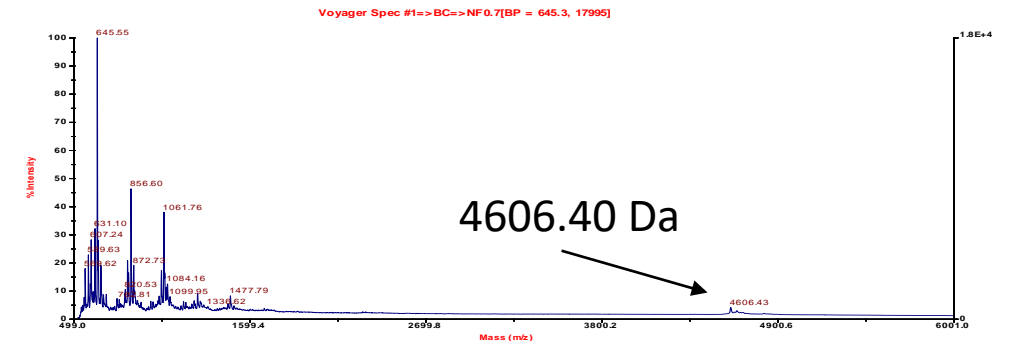
PYY(3-36)



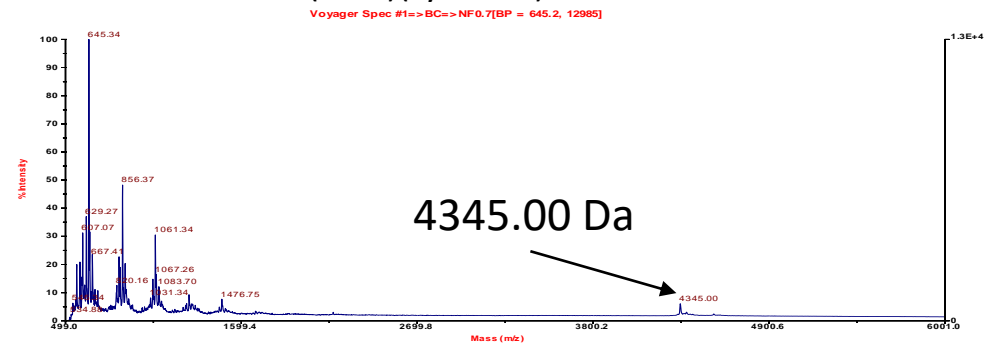
(P³L³¹P³⁴)PYY(1-36)



PYY(1-36)(Lys¹²PAL)

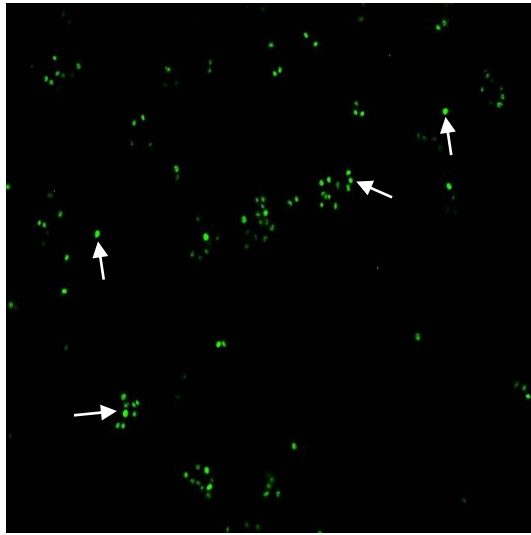


PYY(3-36)(Lys¹²PAL)

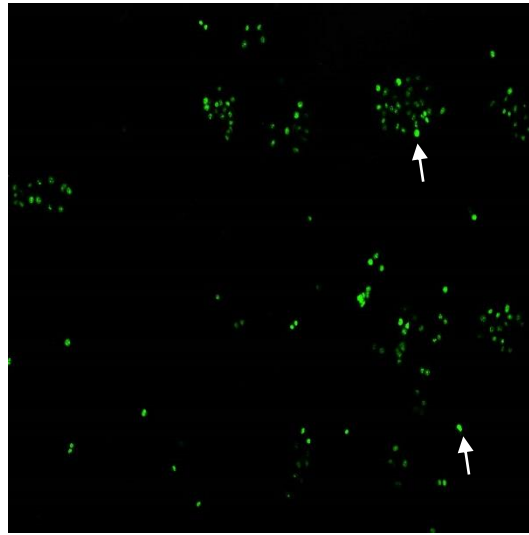


Supplementary Figure 1. Representative MS traces for each identified PYY peptide or degradation product, separated via HPLC. Peptide fragment mass was determined by MALDI-TOF, acquired in positive ionisation mode using CHCA as the matrix.

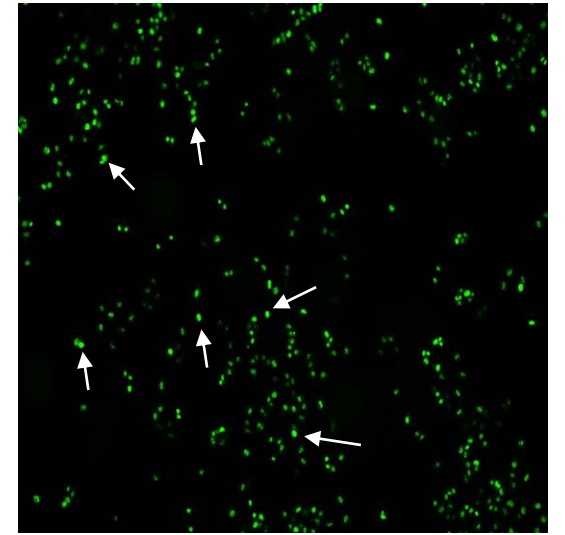
Ki-67: BRIN-BD11 Cells



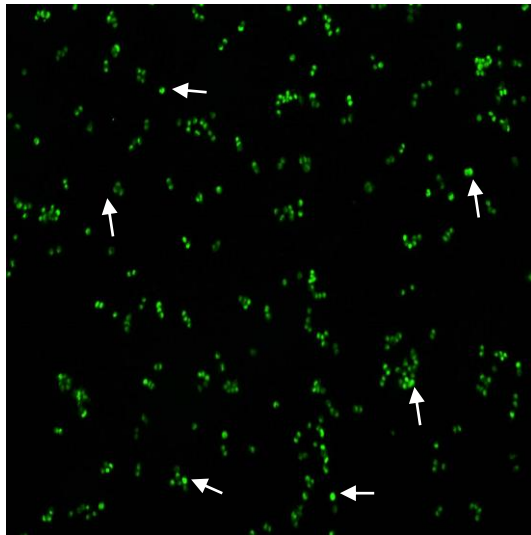
RPMI Media



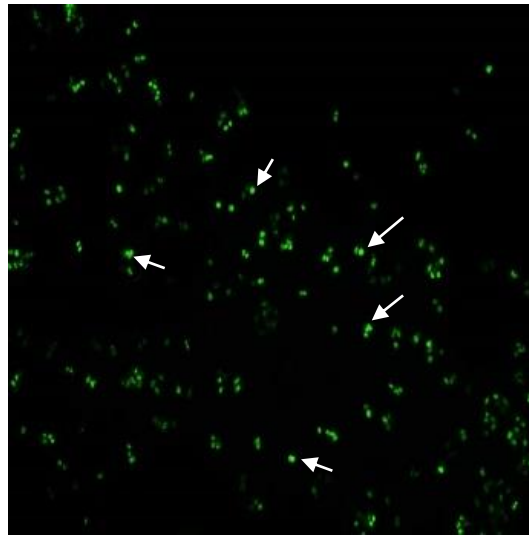
Cytokine Cocktail



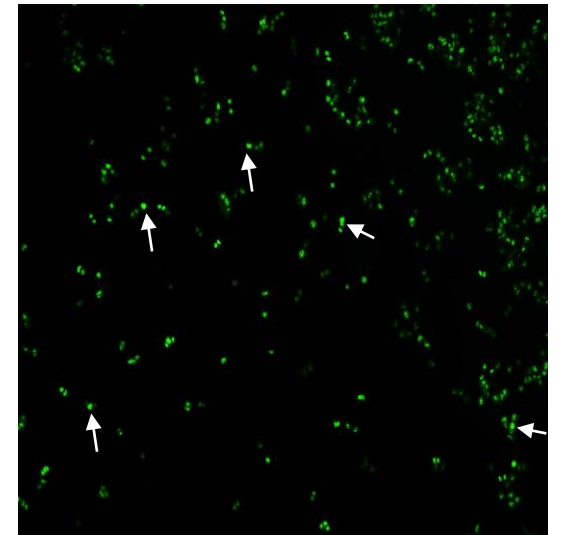
GLP-1 10^{-6} M



PYY(1-36) 10^{-6} M



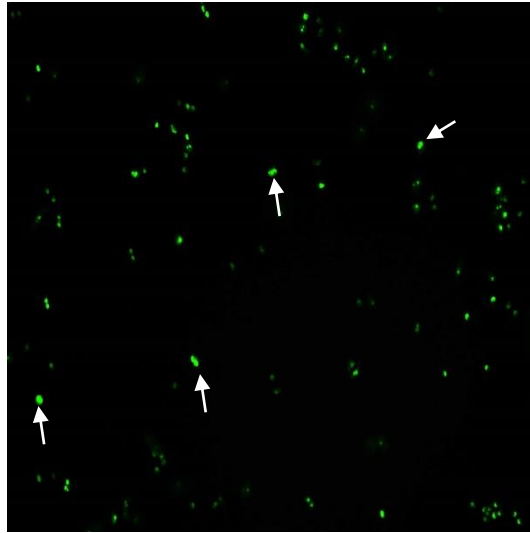
(P³L³¹P³⁴)PYY(1-36) 10^{-6} M



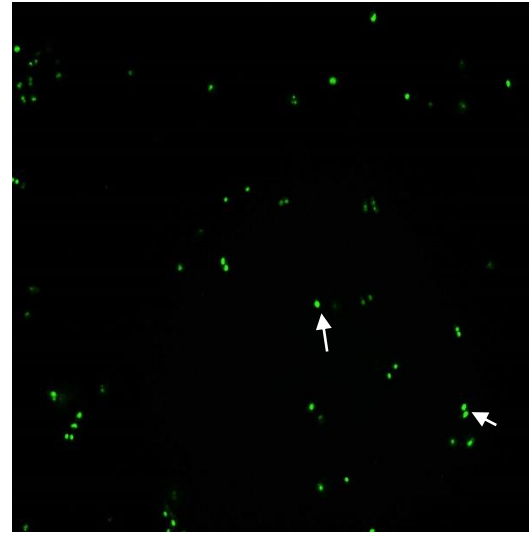
PYY(1-36)(Lys¹²PAL) 10^{-6} M

Supplementary Figure 2. Representative images for Ki-67 staining for controls (media, cytokine cocktail and GLP-1) as well as each treatment, PYY(1-36), (P³L³¹P³⁴)PYY(1-36) and PYY(1-36)(Lys¹²PAL), at 10^{-6} M, are provided for BRIN-BD11 cells. All images shown are X10 magnification.

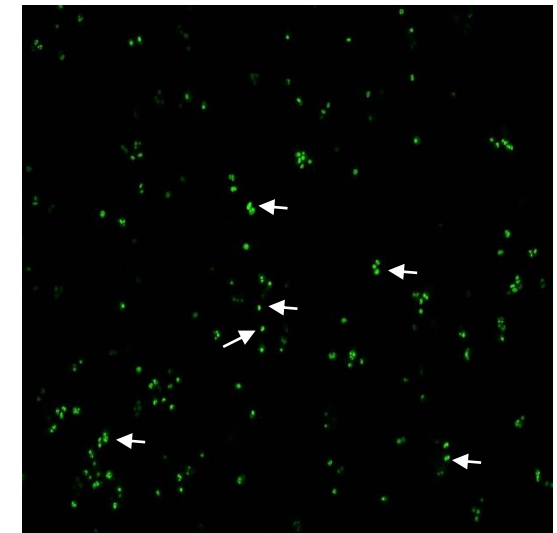
Ki-67: 1.1 B4 Cells



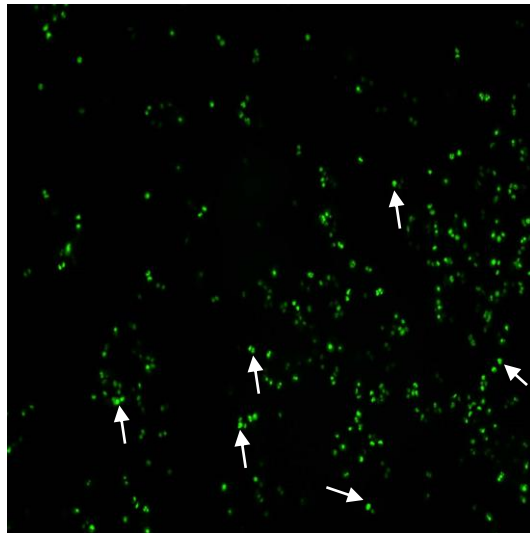
RPMI Media



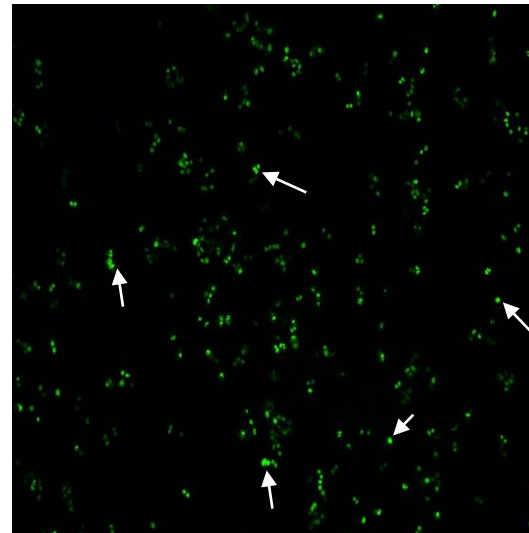
Cytokine Cocktail



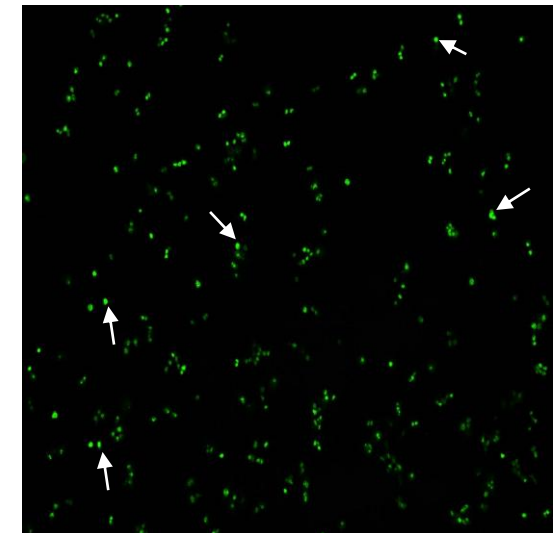
GLP-1 10^{-6} M



PYY(1-36) 10^{-6} M



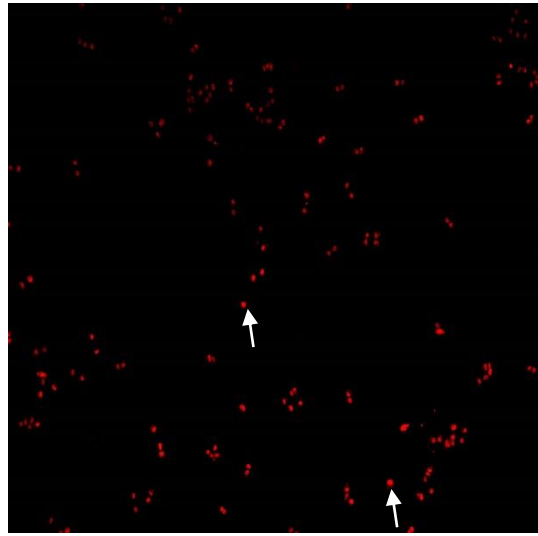
(P³L³¹P³⁴)PYY(1-36) 10^{-6} M



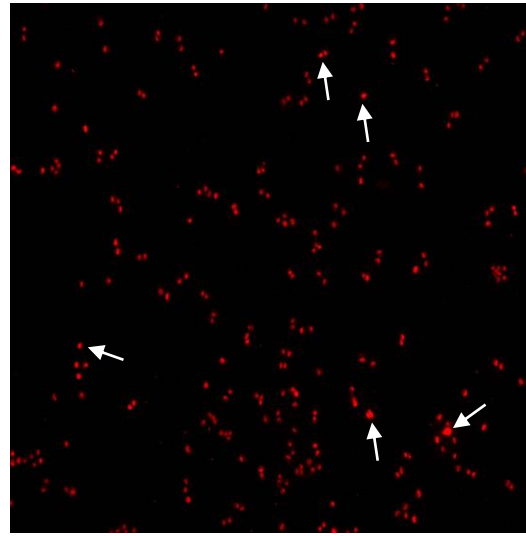
PYY(1-36)(Lys¹²PAL) 10^{-6} M

Supplementary Figure 3. Representative images for Ki-67 staining for controls (media, cytokine cocktail and GLP-1) as well as each treatment, PYY(1-36), (P³L³¹P³⁴)PYY(1-36) and PYY(1-36)(Lys¹²PAL), at 10^{-6} M, are provided for 1.1 B4 cells. All images shown are X10 magnification.

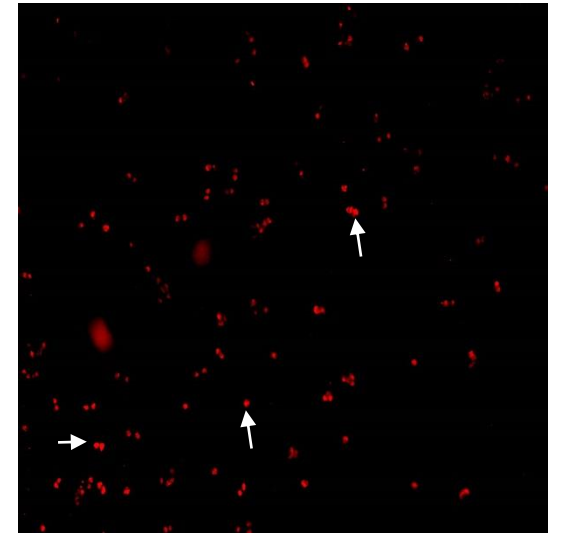
TUNEL: BRIN-BD11 Cells



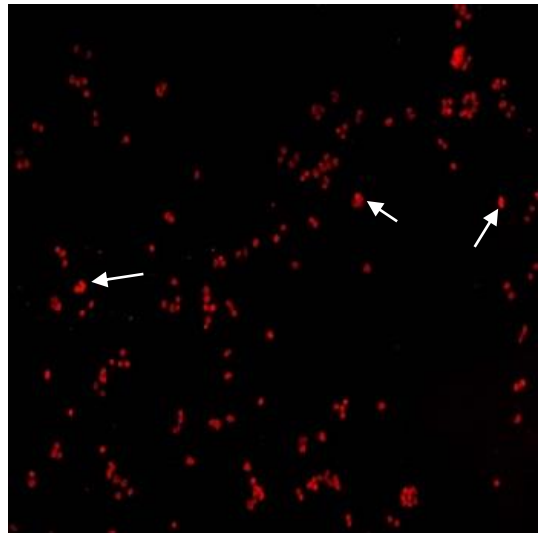
RPMI Media



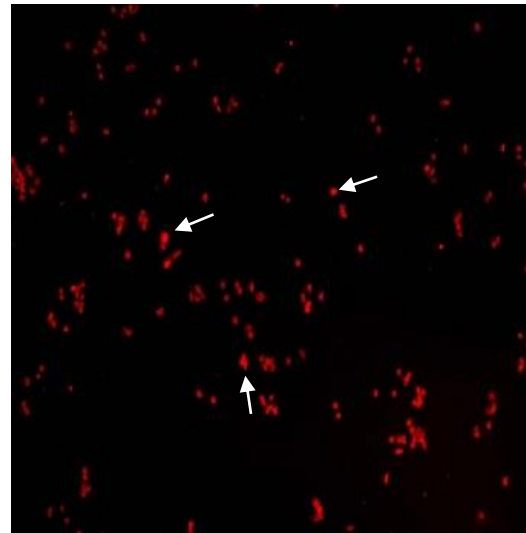
Cytokine Cocktail



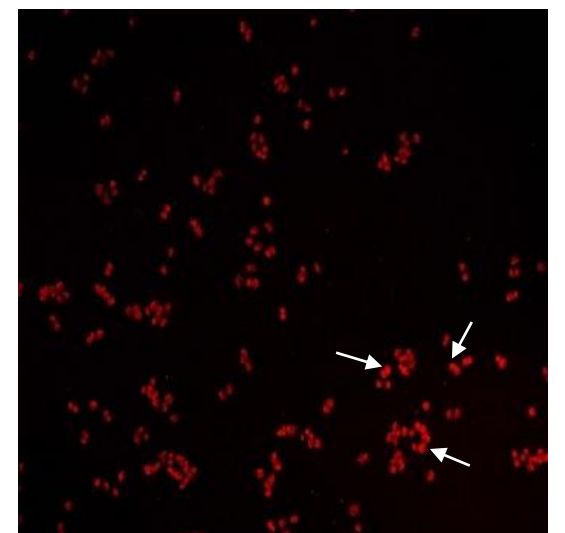
GLP-1 10^{-6} M



PYY(1-36) 10^{-6} M



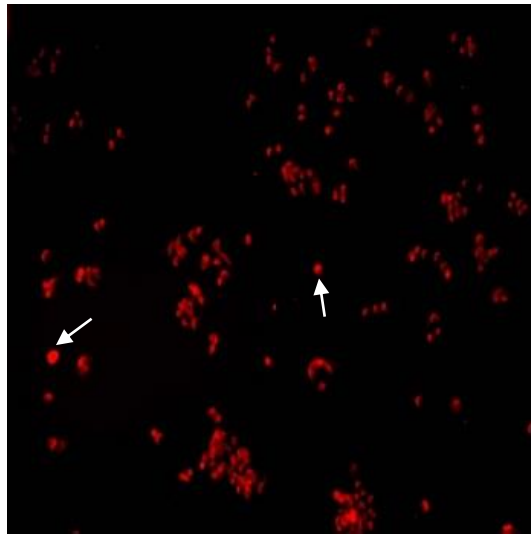
(P³L³¹P³⁴)PYY(1-36) 10^{-6} M



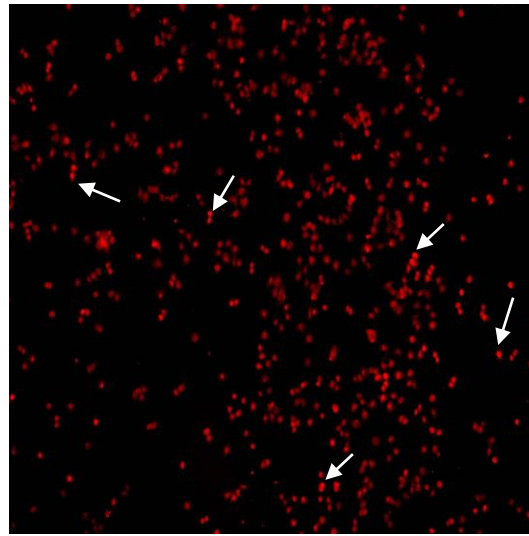
PYY(1-36)(Lys¹²PAL) 10^{-6} M

Supplementary Figure 4. Representative images for TUNEL staining for controls (media, cytokine cocktail and GLP-1) as well as each treatment, PYY(1-36), (P³L³¹P³⁴)PYY(1-36) and PYY(1-36)(Lys¹²PAL), at 10^{-6} M, are provided for BRIN-BD11 cells. All images shown are X10 magnification.

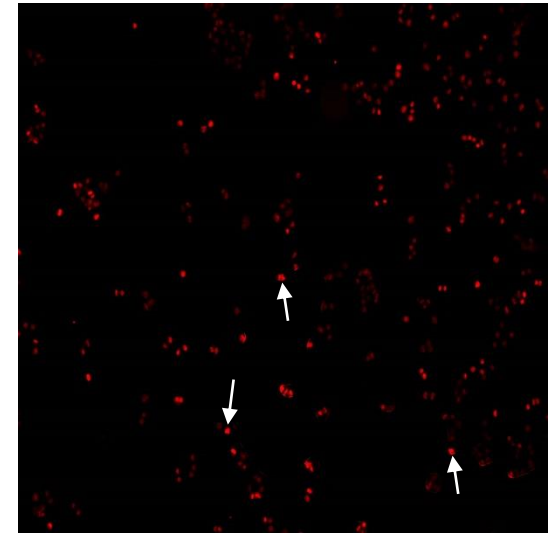
TUNEL: BRIN-BD11 Cells



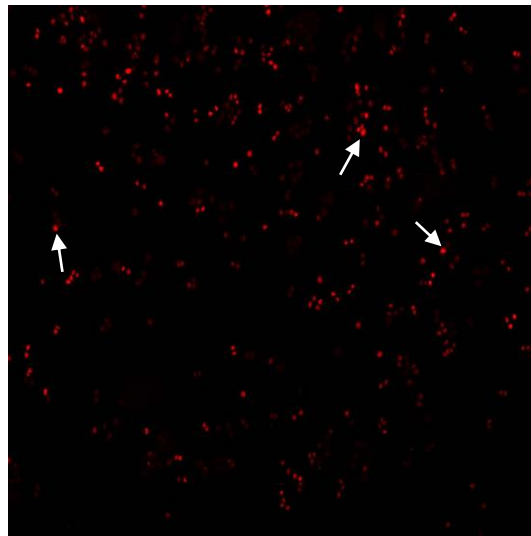
RPMI Media



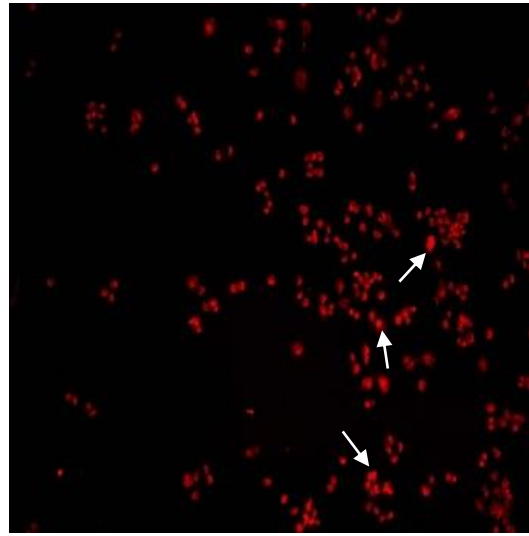
Cytokine Cocktail



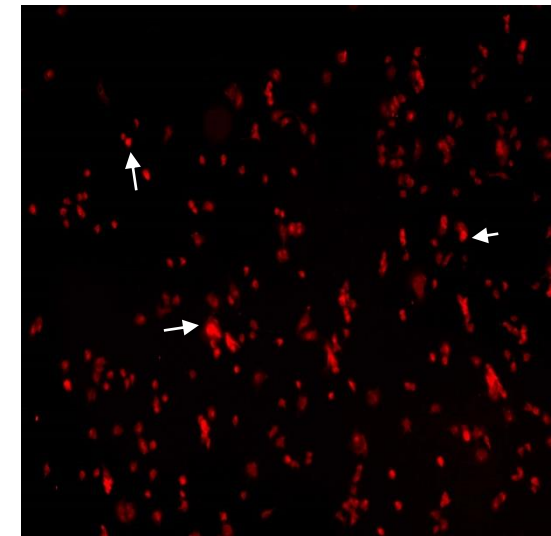
GLP-1 10⁻⁶M



PYY(1-36) 10⁻⁶ M



(P³L³¹P³⁴)PYY(1-36) 10⁻⁶ M



PYY(1-36)(Lys¹²PAL) 10⁻⁶ M

Supplementary Figure 5. Representative images for TUNEL staining for controls (media, cytokine cocktail and GLP-1) as well as each treatment, PYY(1-36), (P³L³¹P³⁴)PYY(1-36) and PYY(1-36)(Lys¹²PAL), at 10⁻⁶ M, are provided for 1.1 B4 cells. All images shown are X10 magnification.