

Supplemental Data

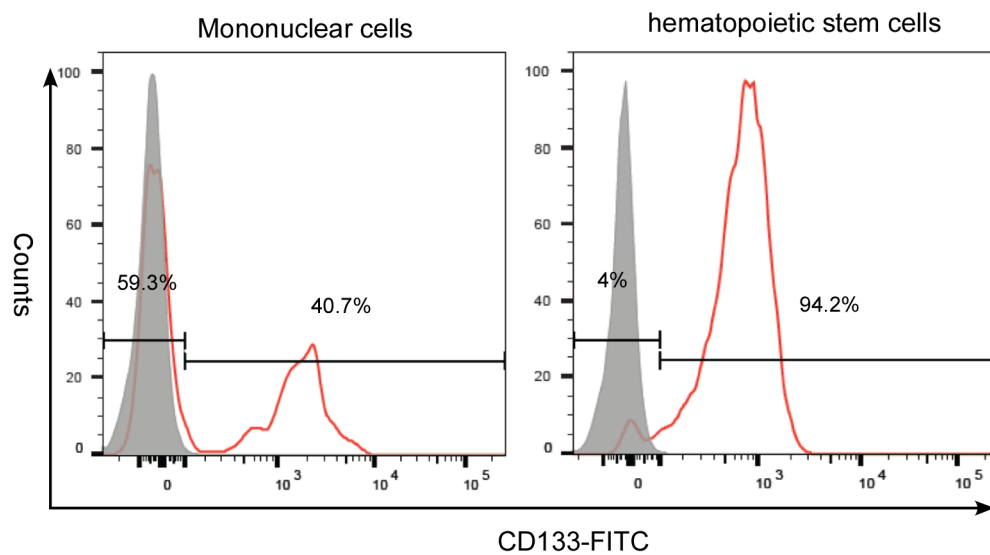


Figure. S1 The diagram of fluorescence CD133⁺-FITC detection in different components separated from human cord blood. A. CD133⁺ hematopoietic stem cells detected in the component of mononuclear cells separated from human cord blood by Ficoll-density gradient centrifugation. **B.** CD133⁺ hematopoietic stem cells detected in the component purified from mononuclear cells by CD133 MicroBead magnetic separation. Gray peak represents negative control, and red line peak represents experimental components detected. The percentage of CD133-positive cells was calculated by mean fluorescence intensity.

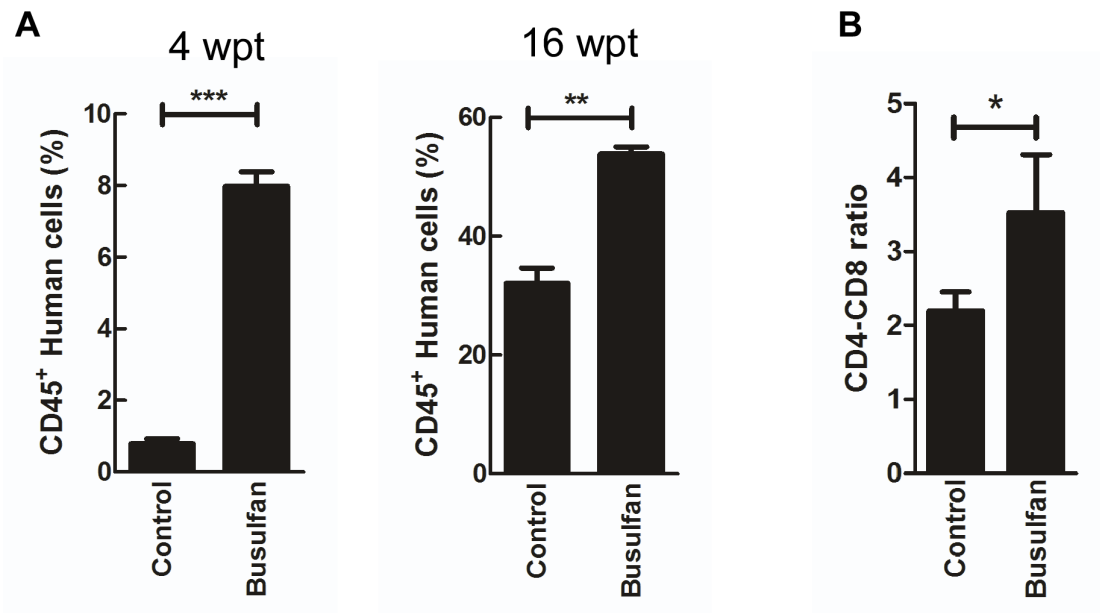


Figure. S2 Difference in reconstitution of human immune cells in peripheral blood of humanized mice between control and busulfan group. A. Difference in human CD45⁺ leukocytes at 4 weeks post-transplantation (wpt) and 16 wpt, respectively **B.** Difference in the ratio of human CD4⁺ to CD8⁺ cells at 16 wpt. * $p < 0.05$, ** $p < 0.01$. Data are mean \pm SEMs in humanized mice (n=6, each group).