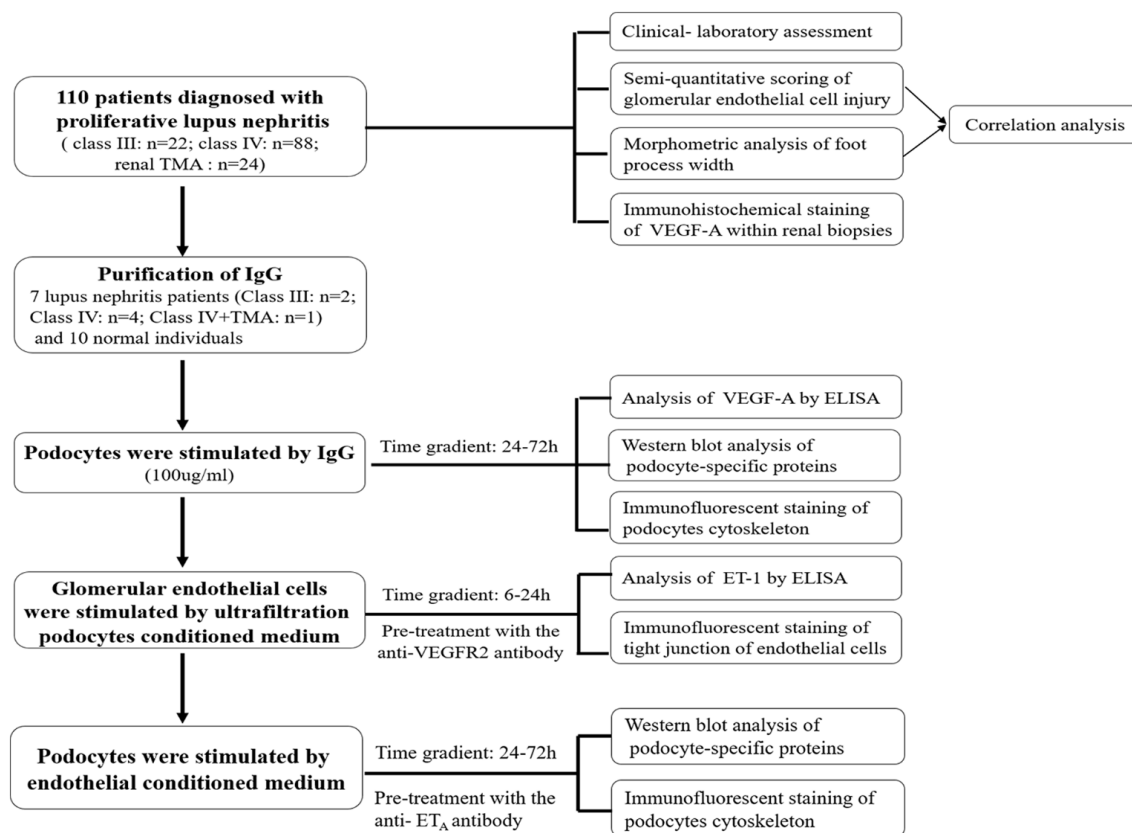
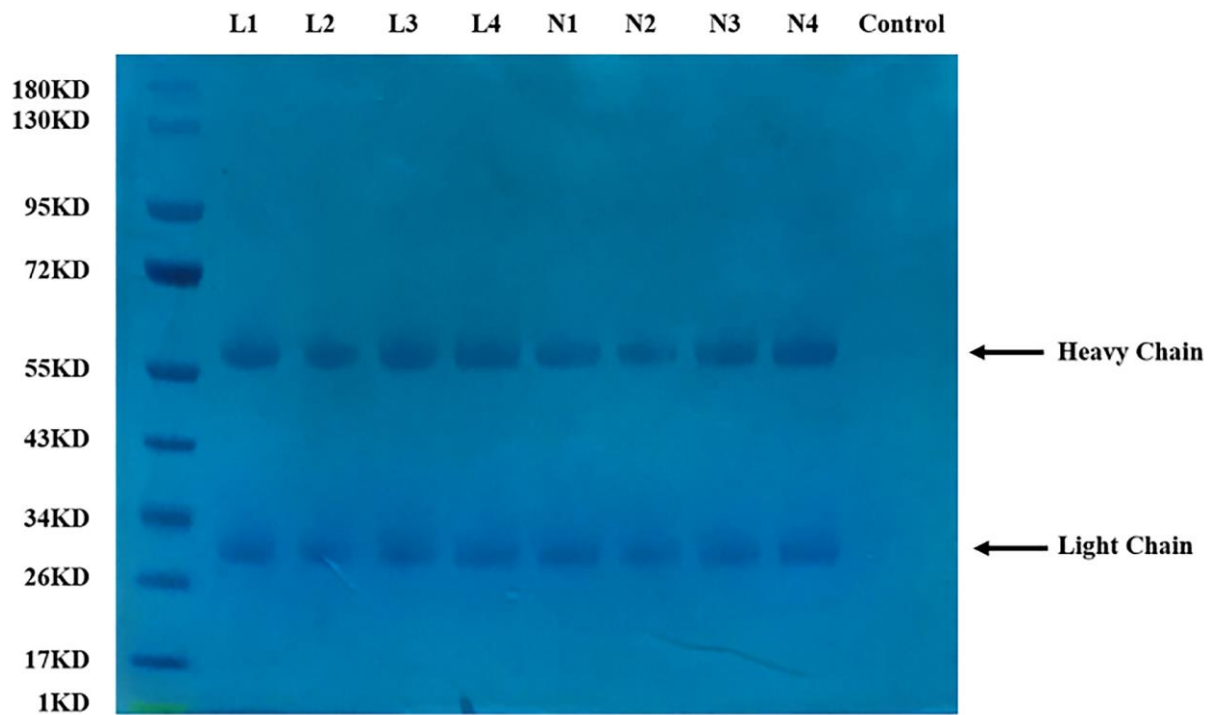


## Supplementary materials

**Supplementary Figure 1.** The flowchart of experiment. Abbreviations: VEGF-A, vascular endothelial growth factor-A; ET-1, endothelin-1; VEGFR2, vascular endothelial growth factor receptor 2; ET<sub>A</sub>, endothelin receptor A.



**Supplementary Figure 2.** Electrophoresis of fractionated IgG from normal individuals and lupus nephritis patients. L: lupus nephritis derived IgG, N: normal IgG. Upper and lower arrow indicate IgG heavy chain and light chain, respectively.



**Supplementary Figure 3.** Effects of IgG from LN patients on the podocytes in 6 h, 12 h and 24 h. (A) Effects of IgG on VEGF-A synthesis by podocytes. (B) Effects of IgG on the expression of nephrin and podocin by podocytes. Notes: L: lupus nephritis derived IgG, N: normal IgG. All the values represent mean  $\pm$  SD derived from three independent experiments.

