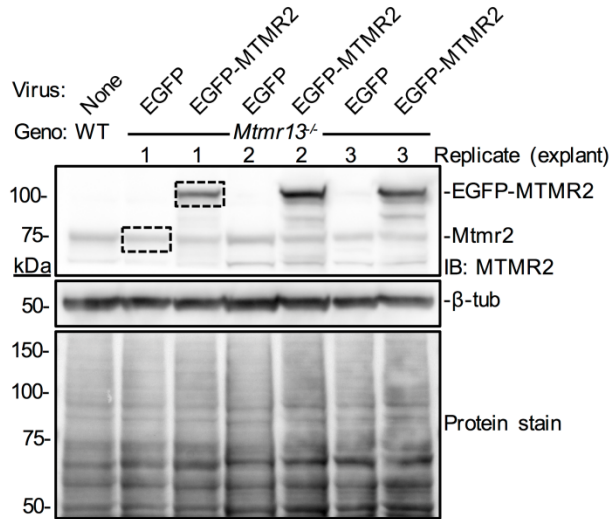
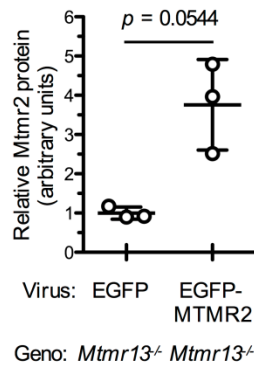


Supplemental Figure S1

A



B



Supplemental Figure S1. (Relates to Figure 6G)

Expression of EGFP-MTMR2 in myelinating DRG explants at levels similar to those of endogenous Mtmr2. Wild type or *Mtmr13*^{-/-} SC-DRG explants were infected with lentiviruses (LV) encoding EGFP or EGFP-MTMR2, or left uninfected. Infection was on day 5 and carried out at an MOI of 15. More than 90% of the Schwann cells in an explant were infected with EGFP or EGFP-MTMR2 under these conditions. At 21 days, protein lysates were prepared.

(A) Immunoblot analysis of endogenous Mtmr2 and EGFP-MTMR2 protein levels in SC-DRG

explants after lentivirus infection (20 µg of protein per lane). **(B)** Quantitation of relative Mtmr2 and EGFP-MTMR2 protein levels via immunoblotting (IB) with an anti-MTMR2 antibody. For the LV-EGFP-infected and LV-EGFP-MTMR2-infected explants, the bar graph reports the levels of the endogenous Mtmr2 protein and the EGFP-MTMR2 protein, respectively; for clarity dashed boxes in the MTMR2 immunoblot panel indicate which protein bands were compared. Relative Mtmr2/MTMR2 protein: 1.000 ± 0.1532 for LV-EGFP infected vs. 3.757 ± 1.152 LV-EGFP-MTMR2 infected (arbitrary units); $p = 0.0544$; $n = 3$ explants for each condition; mean \pm SD. *Abbreviations:* kDa, kiloDalton; Geno., genotype. Mtmr2 levels were normalized to the β -tubulin signal in the corresponding gel/blot lane. Data were normalized such that the mean value for the wild type sample was 1.