

## Online Appendix

Table A1. Sample Descriptives

Table A1(a). Distribution of Hypomania Scores between Employed and Self-Employed Individuals

	Self-Employed			Employed			Full Sample		
	N	Mean	S.D.	N	Mean	S.D.	N	Mean	S.D.
Agriculture	10	0.3120	0.1317	68	0.4210	0.2176	78	0.4071	0.2112
Mining				13	0.3252	0.1798	13	0.3252	0.1798
Construction	31	0.4342	0.2339	205	0.3983	0.2522	236	0.4031	0.2497
Manufacturing	5	0.3818	0.3365	394	0.3900	0.2357	399	0.3899	0.2366
Transportation, Communications, and Other Public Utilities	7	0.4286	0.3180	263	0.3709	0.2271	270	0.3724	0.2293
Wholesale Trade	2	0.5455	0.2571	83	0.3865	0.2403	85	0.3903	0.2403
Retail Trade	19	0.4565	0.2401	642	0.4050	0.2373	661	0.4065	0.2373
Finance, Insurance, and Real Estate	2	0.6364	0.3857	172	0.3742	0.2129	174	0.3772	0.2155
Business and Repair Service	14	0.3032	0.1815	116	0.3569	0.2406	130	0.3511	0.2350
Personal Services	50	0.4200	0.2308	395	0.4147	0.2402	445	0.4153	0.2389
Entertainment and Recreation Services	8	0.3068	0.1369	116	0.4316	0.2655	124	0.4236	0.2606
Professional and Related Services	34	0.5070	0.2287	754	0.3749	0.2277	788	0.3806	0.2292
Public Administration	--	--	--	176	0.3827	0.2234	176	0.3827	0.2234
Armed Services	--	--	--	12	0.4364	0.2359	12	0.4364	0.2359
Total	182	0.4256	0.2330	3409	0.3910	0.2346	3591	0.3927	0.2346

Table A1(b). Distribution of Education-levels

Education level	N	% of the sample
1 No formal schooling	2	0.06
2 Completed grade K, 1 or 2	3	0.08
3 Completed grade 3 or 4	8	0.22
4 Completed grade 5 or 6	27	0.75
5 Completed grade 7	18	0.5
6 Completed grade 8	49	1.36
7 Some high school (grades 9-11)	422	11.75
8 Completed high school	1,078	30.02
9 Graduate equivalency degree (GED)	970	27.01
10 Some college (no degree)	368	10.25
11 Completed associate or other technical 2-year degree	368	10.25
12 Completed college (bachelor's degree)	113	3.15
13 Some graduate or professional studies	165	4.59
Total	3591	

Table A2. Variables and Operationalizations

Variable Name	Variable in the Data	Variable Description	N	mean	sd	min	max
Personal Income	S1Q10B	Total personal income in the past 12 months: 0. \$0 (No; personal), 1. \$1 to \$4,999, 2: \$5,000 to \$7,999, 3. \$8,000 to \$9,999, 4. \$10,000 to \$12,999, 5. \$13,000 to \$14,999, 6. \$15,000 to \$19,999, 7. \$20,000 to \$24,999, 8. \$25,000 to \$29,999, 9. \$30,000 to \$34,999, 10. \$35,000 to \$39,999, 11. \$40,000 to \$49,999, 12. \$50,000 to \$59,999, 13. \$60,000 to \$69,999, 14. \$70,000 to \$79,999, 15. \$80,000 to \$89,999, 16. \$90,000 to \$99,999, 17. \$100,000 or more	3,591	6.4940	4.1065	0	17
Self-Employed	S1Q9C (derived)	1 = Self-employed in own business, professional practice, or farm; 0 = If employed by a private for-profit company, business, or individual; a private not-for-profit, tax-exempt, or charitable organization; the federal government (excluding armed forces), state government, local government; armed forces; or unpaid in a family business or farm. All others coded as missing.	3,591	0.0507	0.2194	0	1
Hypomania Score	Hypomania Score	Average of 13 scale items (1 = Yes; 0 = No). “Had 1+ Week Period”: S5Q6A1 “Needed much less sleep than usual”; S5Q6A2 “Found self more talkative than usual”; S5Q6A3 “Talked so fast people had trouble understanding/getting in word edgewise”; S5Q6A4 “Had trouble concentrating because little things got you easily off track”; S5Q6A5 “Thoughts raced so fast that you couldn't keep track of them”; S5Q6A6 “Thoughts raced so fast that it was hard for you to follow your own thoughts”; S5Q6A7 Felt so restless you fidgeted, paced, or couldn't sit still”; S5Q6A8 “Became more active than usual at work, home, pursuing other interests”; S5Q6A9 “Became more sexually active/had sex with people who normally would not interest you”; S5Q6A10 “Became so physically restless that it made you uncomfortable”; S5Q6A11 “Did unusual things that could get you into trouble—buying things couldnt afford/making foolish money decisions/driving recklessly”; S5Q6A12 “Did things later regretted—spent time with people not normally interested in”; S5Q6A13 “Felt unusually important, had special gifts/powers/abilities.”	3,591	0.3927	0.2346	0.0909	1
Education	S1Q6A	1. No formal schooling; 2. Completed Grade K, 1 or 2; 3. Completed Grade 3 or 4; 4. Completed Grade 5 or 6; 5. Completed Grade 7; 6. Completed Grade 8; 7. Some high school (Grades 9–11); 8. Completed high school; 9. Graduate equivalency degree (GED); 10. Some college (no degree); 11. Completed associate or other technical two-year degree; 12. Completed college (bachelor's degree); 13. Some graduate or professional studies (completed bachelor's degree but not graduate degree); and 14. Completed graduate or professional degree (master's degree or higher).	3,591	8.9282	1.6865	1	13
Year of Birth	doby	Year of birth	3,591	1965	12	1935	1984

Sex	sex	1 = Male; 2 = Female	3,591	1.5650	0.4958	1	2
Native American Asian	S1Q1D1	American Indian or Alaska Native (1 = Yes; 2 = No)	3,591	1.9549	0.2076	1	2
	S1Q1D2	Asian (1 = Yes; 2 = No)	3,591	1.9766	0.1512	1	2
Black or African American Hawaiian or Other Pacific Islander White	S1Q1D3	Black or African American (1 = Yes; 2 = No)	3,591	1.7981	0.4015	1	2
	S1Q1D4	Native Hawaiian or Other Pacific Islander (1 = Yes; 2 = No)	3,591	1.9916	0.0910	1	2
Partner in Household Number of Children in Household Number of People in Household Family Income (12 Months) Height	S1Q1D5	White (1 = Yes; 2 = No)	3,591	1.2389	0.4265	1	2
	spouse	Spouse of respondent (husband/wife, domestic partner, boyfriend/girlfriend) in household (1 = Yes; 2 = No)	3,591	1.5589	0.4966	1	2
Weight	CHLD0_17	Number of children below 18 in household	3,591	0.9126	1.1884	0	8
	numpers	Number of persons in household	3,591	2.7984	1.5333	1	14
Health Insurance FIPS State Dummies Dysthymia	S1Q11A	Total family income in past 12 months	3,591	42775	42063	24	1000000
	S1Q24IN	Height in inches	3,591	66.9089	4.0321	48	84
Manic Disorder	S1Q24LB	Weight in pounds	3,591	176.6121	45.2375	78	450
	S1Q14C4	Currently covered by private health insurance (1 = Yes; 2 = No)	3,591	1.3684	0.4824	1	2
Panic Disorder without Agoraphobia	fipstate	FIPS state code	3,591	27.9811	15.8030	1	56
	dyslife	Dysthymia—Lifetime (non-hierarchical)	3,591	0.1707	0.3763	0	1
Panic Disorder without Agoraphobia	nmandxlife	Manic disorder—Lifetime (non-hierarchical)	3,591	0.3267	0.4691	0	1
	panlife	Panic disorder without agoraphobia—Lifetime (non-hierarchical)	3,591	0.1273	0.3333	0	1

Panic Disorder with Agoraphobia	apanlife	Panic disorder with agoraphobia—Lifetime (non-hierarchical)	3,591	0.0395	0.1949	0	1
Agoraphobia with No History of Panic Disorder	gpanlife	Agoraphobia with no history of panic disorder—Lifetime (non-hierarchical)	3,591	0.0045	0.0666	0	1
Social Phobia	socpdlife	Social phobia—Lifetime (non-hierarchical)	3,591	0.1395	0.3465	0	1
Specific Phobia	sphoblif	Specific phobia—Lifetime (non-hierarchical)	3,591	0.2155	0.4113	0	1
Generalized Anxiety Disorder	genaxlife	Generalized anxiety disorder—Lifetime (non-hierarchical)	3,591	0.1557	0.3626	0	1
Obsessive	OBCOMDX2	Obsessive-compulsive personality disorder	3,591	0.2456	0.4305	0	1
Paranoid	PARADX2	Paranoid personality disorder (lifetime diagnosis)	3,591	0.2094	0.4069	0	1
Schizoid	SCHIZDX2	Schizoid personality disorder (lifetime diagnosis)	3,591	0.1231	0.3286	0	1
Histrionic	HISTDX2	Histrionic personality disorder (lifetime diagnosis)	3,591	0.0936	0.2913	0	1
Antisocial	ANTISOCDX2	Antisocial personality disorder (with conduct disorder)	3,591	0.1479	0.3550	0	1
Avoidant	AVOIDPDX2	Avoidant personality disorder (lifetime diagnosis)	3,591	0.1008	0.3011	0	1
Dependent	DEPPDDX2	Dependent personality disorder (lifetime diagnosis)	3,591	0.0198	0.1392	0	1

**Table A3.** Correlation Table

	1	2	3	4	5	6	7	8	9	10	11
1 Personal Income	1										
2 Self-Employed	0.005	1									
3 Hypomania Score	-0.0856*	0.0324	1								
4 Education	0.4184*	0.0008	-0.0583*	1							
5 Year of birth	-0.2984*	-0.0976*	0.0099	-0.1172*	1						
6 Sex	-0.2255*	-0.0124	-0.0118	0.0096	-0.0249	1					
7 Native American	0.0536*	-0.0293	-0.0155	0.0711*	-0.0309	0.0096	1				
8 Asian	-0.0379*	-0.0146	-0.0012	-0.0831*	-0.0441*	0.0091	-0.0248	1			
9 Black or African American	0.0735*	0.015	0.0114	0.0720*	0.004	-0.0971*	-0.0458*	-0.0595*	1		
10 Hawaiian or Other Pacific Islander	0.0081	0.0212	0.0024	0.0124	-0.0393*	0.0182	0.0538*	0.0465*	-0.0385*	1	
11 White	-0.0711*	-0.0223	-0.0166	-0.0571*	0.0196	0.0780*	-0.1173*	-0.2330*	-0.8651*	-0.1064*	1
12 Partner in Household	-0.1585*	-0.0351*	0.0509*	-0.0751*	0.1908*	0.0181	-0.0039	-0.0225	-0.1408*	0.0232	0.1374*
13 Number of Children in Household	-0.0641*	0.0042	-0.0322	-0.1083*	0.1366*	0.1193*	-0.0295	0.0382*	-0.1030*	-0.0377*	0.0956*
14 Number of People in Household	-0.1369*	-0.0044	-0.0563*	-0.1400*	0.2120*	0.0444*	-0.0496*	0.0109	-0.0304	-0.0580*	0.0375*
15 Family Income (12 Months)	0.5204*	0.027	-0.0807*	0.3376*	-0.1464*	-0.0753*	0.0359*	-0.0449*	0.1232*	-0.0097	-0.1147*
16 Height	0.1759*	0.0014	-0.0048	0.0574*	0.0674*	-0.6759*	-0.0016	0.0591*	0.026	0.0359*	-0.0440*
17 Weight	0.1162*	0.0134	-0.0014	-0.0051	-0.1195*	-0.2980*	-0.0009	0.0865*	-0.0741*	0.0435*	0.0357*
18 Health Insurance	-0.4063*	0.0814*	0.0960*	-0.2824*	0.1521*	0.0052	-0.0788*	0.0113	-0.0933*	-0.006	0.0987*
19 Dysthymia	-0.0343*	-0.0226	-0.0072	-0.0087	0.0236	0.0307	-0.0103	0.0825*	0.0036	0.0057	-0.0444*
20 Manic Disorder	-0.0823*	0.0268	0.1711*	-0.0228	-0.0968*	0.0771*	-0.0333*	0.0359*	0.0309	0.0254	-0.0477*
Panic Disorder without											
21 Agoraphobia	-0.0912*	0.0177	0.5946*	-0.0503*	-0.0127	-0.0057	-0.026	0.0057	0.0249	-0.0013	-0.031
22 Panic Disorder with Agoraphobia	-0.0392*	0.0146	0.1299*	-0.0169	-0.0848*	0.0704*	-0.0378*	-0.0017	0.0526*	0.0075	-0.0415*
Agoraphobia with No History of											
23 Panic Disorder	-0.0533*	0.0117	0.1666*	-0.0354*	-0.0323	0.0570*	-0.0041	0.003	-0.0012	0.0029	-0.0165
24 Social Phobia	-0.0223	0.0036	0.0103	0.0053	-0.0229	-0.0003	-0.0056	0.0104	0.0128	0.0061	-0.0179
25 Specific Phobia	-0.0469*	0.0352*	0.1584*	-0.021	-0.0357*	0.0599*	-0.0132	-0.0547*	0.0223	0.0016	-0.0239
26 Generalized Anxiety Disorder	-0.0702*	0.0302	0.1343*	-0.0078	-0.0259	0.1280*	0.0226	0.0005	0.0106	0.0183	-0.0221
27 Conduct	-0.0221	0.0269	0.1613*	0.0402*	-0.1207*	0.0963*	-0.0066	0.0309	0.0418*	-0.0028	-0.0587*
28 Obsessive	0.0221	0.0392*	0.1876*	0.0711*	-0.0377*	-0.0096	-0.01	-0.0016	0.0146	0.0168	-0.0178
29 Paranoid	-0.1341*	0.0059	0.2019*	-0.1169*	0.0646*	0.0595*	-0.0266	-0.02	-0.0838*	0.0247	0.0792*
30 Schizoid	-0.0626*	-0.0209	0.1525*	-0.0569*	0.0213	0.0073	-0.0247	0.0019	-0.0755*	0.0251	0.0684*
31 Histrionic	-0.0624*	0.0086	0.2157*	-0.0419*	0.1050*	-0.0151	0.0099	0.0054	-0.0194	-0.002	0.0083
32 Antisocial	-0.0585*	0.0253	0.1688*	-0.1065*	0.1012*	-0.1488*	-0.0380*	0.0229	0.0454*	-0.0221	-0.0384*
33 Avoidant	-0.1110*	-0.0057	0.2110*	-0.0768*	0.0174	0.0531*	-0.003	-0.0155	0.0278	0.0104	-0.0293
34 Dependent	-0.1140*	-0.0237	0.1514*	-0.0794*	0.0493*	0.0278	-0.0077	-0.031	0.0216	-0.0089	-0.028

Note. \* $p < 0.05$  (two-tailed); case-wise deletion

	12	13	14	15	16	17	18	19	20	21	22
12 Partner in Household	1										
13 Number of Children in Household	-0.1820*	1									
14 Number of People in Household	-0.3060*	0.8231*	1								
15 Family Income (12 Months)	-0.2984*	0.0156	0.1066*	1							
16 Height	0.0139	-0.1163*	-0.0646*	0.0649*	1						
17 Weight	-0.0244	-0.0272	-0.0292	0.0128	0.4451*	1					
18 Health Insurance	0.1704*	0.0640*	0.0681*	-0.2816*	-0.0213	-0.0127	1				
19 Dysthymia	-0.0001	0.0062	0.0011	-0.0273	-0.0052	0.0146	0.0198	1			
20 Manic Disorder	0.0259	-0.0164	-0.0605*	-0.0689*	-0.0683*	0.0312	0.0862*	0.0509*	1		
Panic Disorder without											
21 Agoraphobia	0.0328*	-0.0062	-0.0285	-0.0506*	-0.0211	0.0004	0.1032*	0.0041	0.1890*	1	
22 Panic Disorder with Agoraphobia	-0.0125	0	-0.0261	-0.0350*	-0.0540*	0.008	0.0513*	0.008	0.1132*	0.1296*	1
Agoraphobia with No History of											
23 Panic Disorder	-0.0039	0.0113	-0.0022	-0.0379*	-0.0507*	-0.0125	0.0139	0.0165	0.1738*	0.1268*	-0.0775*
24 Social Phobia	-0.0079	0.0225	0.0252	0.0127	0.0046	0.0015	0.0182	0.0191	0.0474*	0.0426*	-0.0255
25 Specific Phobia	-0.0097	-0.0211	-0.0309	-0.0402*	-0.0539*	0.0211	0.0157	0.0225	0.1997*	0.1634*	0.0560*
26 Generalized Anxiety Disorder	-0.0103	0.0146	0.0066	-0.0361*	-0.1019*	-0.0474*	0.0475*	-0.0139	0.1222*	0.1230*	0.0884*
27 Conduct	0.0086	-0.0085	-0.0492*	-0.0226	-0.0766*	0.0232	0.0224	0.0231	0.3237*	0.1694*	0.1380*
28 Obsessive	-0.0182	0.0022	-0.025	0.0095	-0.0247	-0.0002	-0.0053	-0.0178	0.1521*	0.1737*	0.0849*
29 Paranoid	0.0658*	0.0367*	0.0172	-0.0936*	-0.0734*	-0.0309	0.1177*	0.0335*	0.1976*	0.1961*	0.1053*
30 Schizoid	0.0443*	0.0226	0.0017	-0.0800*	-0.0111	0.0018	0.0618*	0.0483*	0.1567*	0.1620*	0.0299
31 Histrionic	0.0909*	-0.0174	-0.0101	-0.0443*	0.0208	-0.0339*	0.0381*	-0.012	0.0525*	0.1657*	0.0552*
32 Antisocial	0.032	0.0201	0.0195	-0.0687*	0.1112*	0.0546*	0.1226*	0.0154	0.0987*	0.1515*	0.0481*
33 Avoidant	0.0367*	-0.0026	-0.0145	-0.0818*	-0.0702*	0.0327*	0.0798*	0.0394*	0.2316*	0.2007*	0.0720*
34 Dependent	0.0295	-0.0064	-0.0074	-0.0700*	-0.0335*	0.0077	0.0906*	-0.0101	0.1429*	0.1314*	0.0298

Note. \*p < 0.05 (two-tailed); case-wise deletion

	23	24	25	26	27	28	29	30	31	32	33
23 Agoraphobia with No History of											
23 Panic Disorder	1										
24 Social Phobia	-0.0136	1									
25 Specific Phobia	0.3142*	0.0817*	1								
26 Generalized Anxiety Disorder	0.2377*	0.0564*	0.2737*	1							
27 Conduct	0.2164*	0.0751*	0.2572*	0.2270*	1						
28 Obsessive	0.1498*	0.0590*	0.2314*	0.1383*	0.1583*	1					
29 Paranoid	0.1695*	0.0478*	0.2550*	0.1680*	0.2057*	0.3232*	1				
30 Schizoid	0.1632*	0.0386*	0.1843*	0.1087*	0.1174*	0.2667*	0.3301*	1			
31 Histrionic	0.1114*	-0.0071	0.1245*	0.1153*	0.0968*	0.1921*	0.2788*	0.1387*	1		
32 Antisocial	0.0684*	-0.0043	0.0859*	0.0697*	0.0743*	0.1341*	0.1596*	0.1376*	0.1733*	1	
33 Avoidant	0.2311*	0.0332*	0.3697*	0.1552*	0.2134*	0.2065*	0.3096*	0.2406*	0.1020*	0.1081*	1
34 Dependent	0.2175*	-0.0095	0.1391*	0.1055*	0.1487*	0.1281*	0.1924*	0.1234*	0.1742*	0.1155*	0.3112*

*Note.* \* $p < 0.05$  (two-tailed); case-wise deletion

**Table A4.** Multilevel Model Estimates

VARIABLES	OLS		Multilevel model	
	No controls		With controls	
	(1) S1Q10B	(2) S1Q10B	(3) S1Q10B	(4) S1Q10B
Self-Employed × Hypomania Score	21.29 (16.14)	-746.3 (578.7)		1,723** (740.6)
Hypomania Score × Hypomania Score	-2.269 (5.936)	-67.67 (171.3)		-170.7 (141.5)
Self-Employed × Hypomania Score × Hypomania Score	-26.51 (19.96)	1,251* (687.9)		-1,438* (772.7)
Self-Employed × Education	0.280 (0.282)			0.803 (0.495)
Hypomania Score × Education	-0.239 (0.567)			-0.153 (0.491)
Self-Employed × Hypomania Score × Education	-2.335 (1.848)			-4.940** (2.404)
Hypomania Score × Hypomania Score × Education	0.0590 (0.668)			-0.0295 (0.516)
Self-Employed × Hypomania Score × Hypomania Score × Education	3.060† (2.291)			5.521** (2.441)
Self-Employed × Birth year		0.0169 (0.0506)		0.191** (0.0766)
Hypomania Score × Birth year		-0.00707 (0.0741)		-0.0747 (0.0679)
Self-Employed × Hypomania Score × Birth year		0.380 (0.295)		-0.856** (0.375)
Hypomania Score × Hypomania Score × Birth year		0.0329 (0.0871)		0.0866 (0.0717)
Self-Employed × Hypomania Score × Hypomania Score × Birth year		-0.635* (0.350)		0.709* (0.392)
Self-Employed	-2.824 (2.496)	-33.94 (99.13)	-0.0833 (0.335)	-381.7** (151.2)
Hypomania Score	2.535 (5.060)	15.07 (145.7)		149.0 (134.1)
Education	1.013*** (0.0902)		0.461*** (0.0323)	0.525*** (0.0972)
Year of Birth		- 0.0802*** (0.0123)	- 0.0547*** (0.00445)	- 0.0436*** (0.0132)
Sex	21.29 (16.14)	-746.3 (578.7)	-1.661*** (0.136)	-1.650*** (0.136)
Native American			-0.201 (0.259)	-0.209 (0.259)
Asian			-0.722* (0.418)	-0.781* (0.417)
Black or African American			-0.444	-0.451



	(0.328)	(0.327)
Hawaiian or Other Pacific Islander	-0.268	-0.285
	(0.564)	(0.563)
White	-0.403	-0.404
	(0.320)	(0.319)
Partner in Household	-0.101	-0.101
	(0.113)	(0.113)
Number of Children in Household	0.974***	0.976***
	(0.0746)	(0.0744)
Number of People in Household	-0.888***	-0.892***
	(0.0615)	(0.0614)
Family Income (12 Months)	3.63e-	3.64e-
	05***	05***
	(1.33e-06)	(1.33e-06)
Height	0.00413	0.00595
	(0.0178)	(0.0177)
Weight	0.00276**	0.00274**
	(0.00123)	(0.00123)
Health Insurance	-1.721***	-1.722***
	(0.111)	(0.111)
Dysthymia	-0.382***	-0.383***
	(0.145)	(0.145)
Dysthymia × Self-employed	1.159*	1.038
	(0.642)	(0.660)
Manic Disorder Life	-0.352***	-0.358***
	(0.113)	(0.134)
Manic Disorder Life × Self-Employed	0.149	-0.431
	(0.497)	(0.599)
Panic Disorder without Agoraphobia	-0.0895	-0.0893
	(0.155)	(0.155)
Panic Disorder without Agoraphobia × Self-Employed	-1.287*	-1.328*
	(0.685)	(0.715)
Panic Disorder with Agoraphobia	-0.342	-0.344
	(0.284)	(0.284)
Panic Disorder with Agoraphobia × Self-Employed	1.213	1.111
	(1.274)	(1.285)
Agoraphobia with No History of Panic Disorder	-1.343*	-1.399*
	(0.755)	(0.754)
Agoraphobia with No History of Panic Disorder × Self-Employed	-0.00675	0.601
	(3.145)	(3.189)
Social Phobia	0.0624	0.0575
	(0.167)	(0.166)
Social Phobia × Self-Employed	-0.551	-0.412
	(0.768)	(0.781)
Specific Phobia	0.0472	0.0437
	(0.131)	(0.131)
Specific Phobia × Self-Employed	-1.404**	-1.505**
	(0.579)	(0.590)
Generalized Anxiety Disorder Life	0.0278	0.0353
	(0.155)	(0.155)

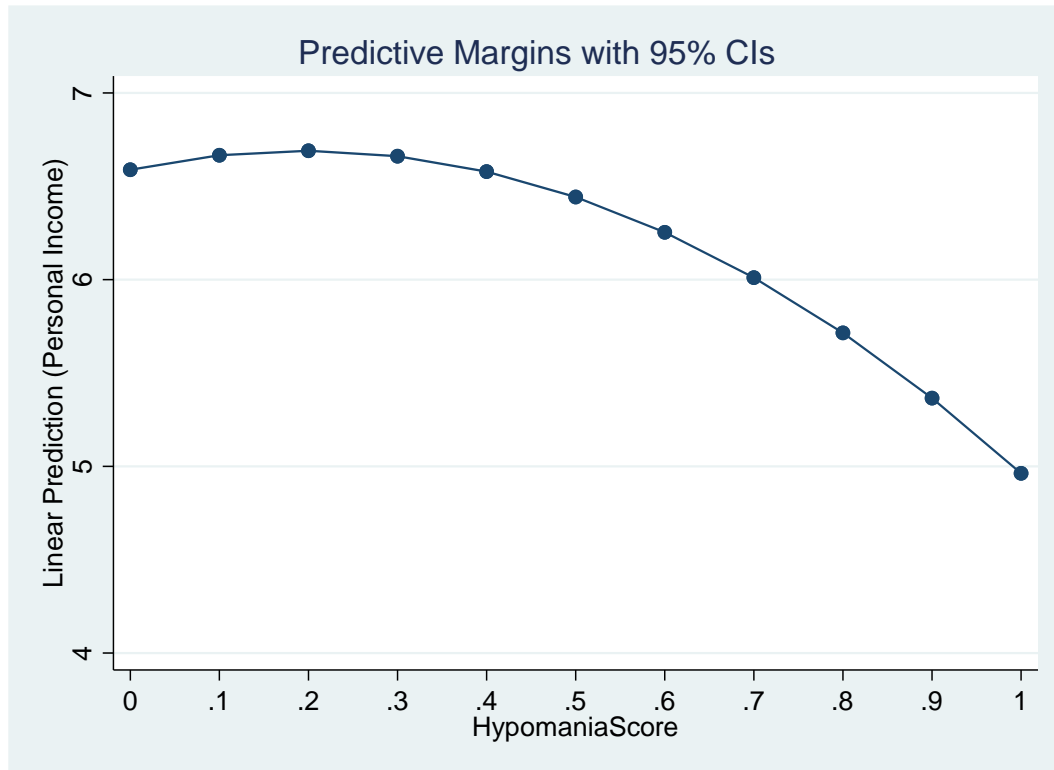
Generalized Anxiety Disorder Life × Self-Employed			-0.545 (0.638)	-0.768 (0.655)
Obsessive Compulsive Disorder			0.100 (0.129)	0.0916 (0.129)
Obsessive Compulsive Disorder × Self-Employed			-0.0666 (0.534)	0.0197 (0.546)
Paranoid			-0.190 (0.145)	-0.200 (0.145)
Paranoid × Self-Employed			0.762 (0.656)	0.626 (0.672)
Schizoid			0.112 (0.165)	0.115 (0.165)
Schizoid × Self-Employed			0.926 (0.891)	1.278 (0.916)
Histrionic			-0.0265 (0.184)	-0.00902 (0.185)
Histrionic × Self-Employed			0.735 (0.822)	0.482 (0.855)
Antisocial			0.121 (0.149)	0.120 (0.149)
Antisocial × Self-Employed			0.203 (0.597)	0.490 (0.625)
Avoidant			-0.218 (0.193)	-0.203 (0.193)
Avoidant × Self-Employed			-0.382 (0.969)	-0.588 (0.986)
Dependent Personality Disorder			-0.771** (0.380)	-0.794** (0.381)
Dependent Personality Disorder × Self-Employed			-0.722 (3.377)	-2.888 (3.503)
Constant	-2.479** (1.041)	164.2*** (24.26)	118.1*** (9.004)	95.55*** (26.22)
State dummies	Included	Included	Included	Included
Sample weight	Included	Included	Included	Included
Observations	4,252	4,252	3,591	3,591
R-square	0.192	0.106		
Number of groups			51	51
Chi-square			3585	3629
p-value			0	0
				Model 1 vs. Model 2: 22.02(14); p = 0.0783
Change in Chi-square (Change in df)				

Standard errors in parentheses

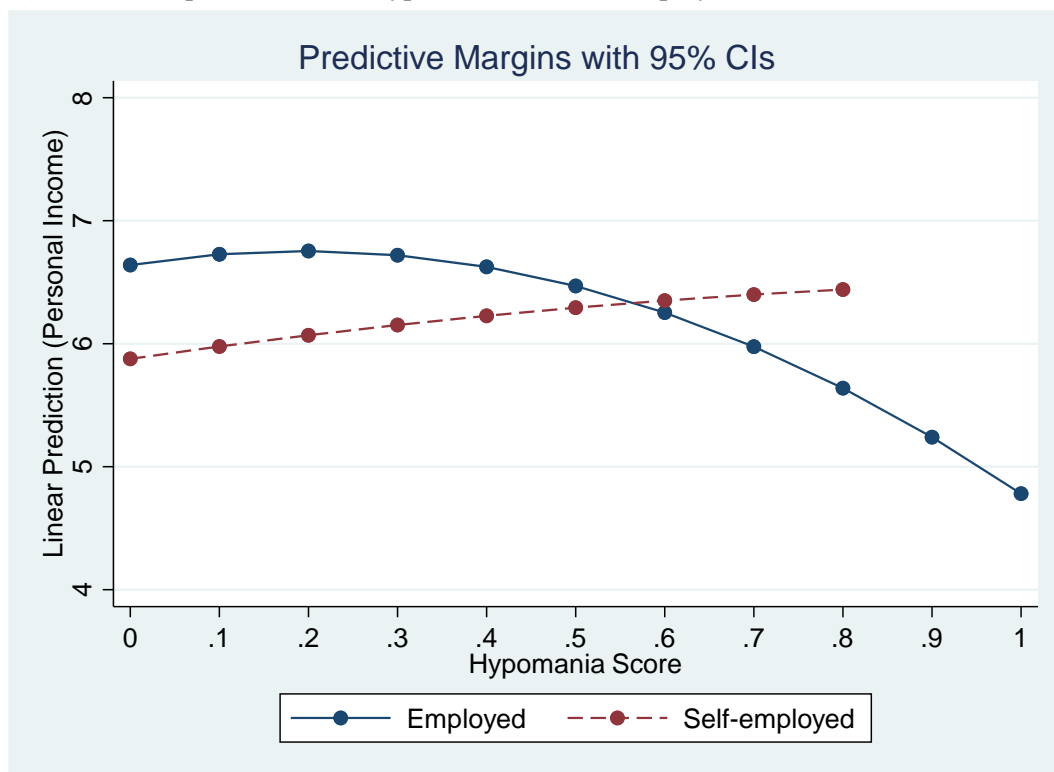
\*\*\* p<0.01, \*\* p<0.05, \* p<0.1; † p = 0.182

For the multilevel model, the inferences were consistent when including the sample weight

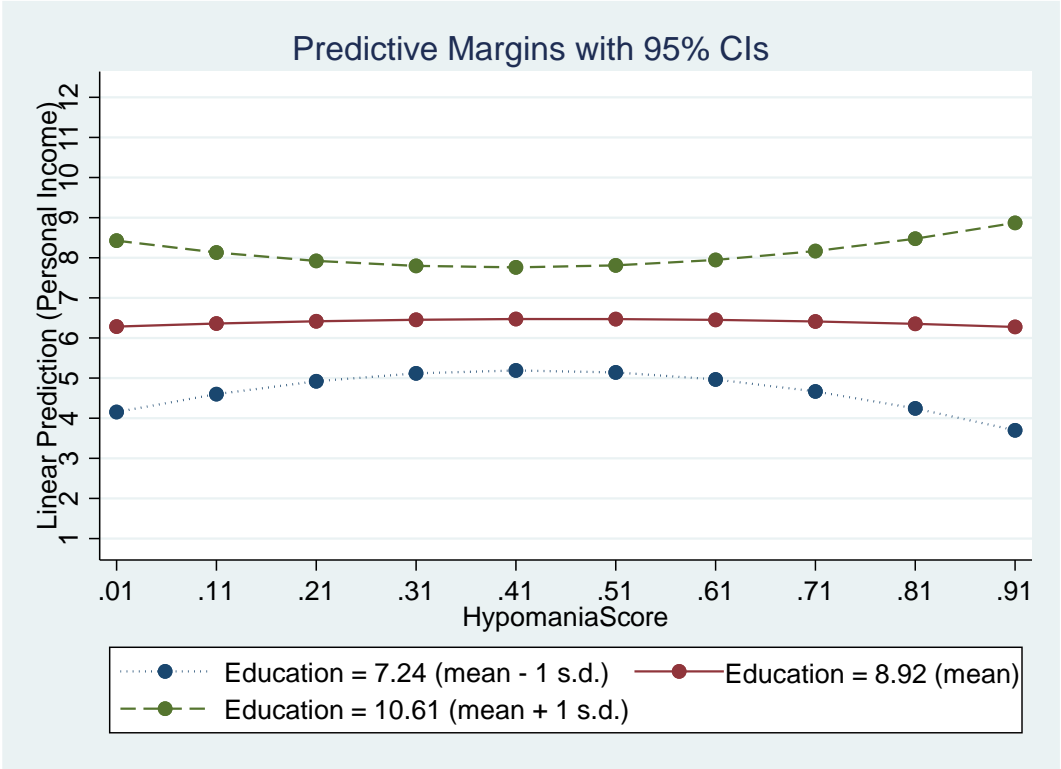
**Figure A**  
**Moderation plots for models 1 and 2 in Table 1**  
**Figure A(1): Squared term of Hypomania**



**Figure A(2): Squared Term of Hypomania and Self-Employment**



**Figure A(3):** Squared Term of Hypomania, Self-Employment, and Education



**Figure A(4):** Squared Term of Hypomania, Self-Employment, and Year of Birth