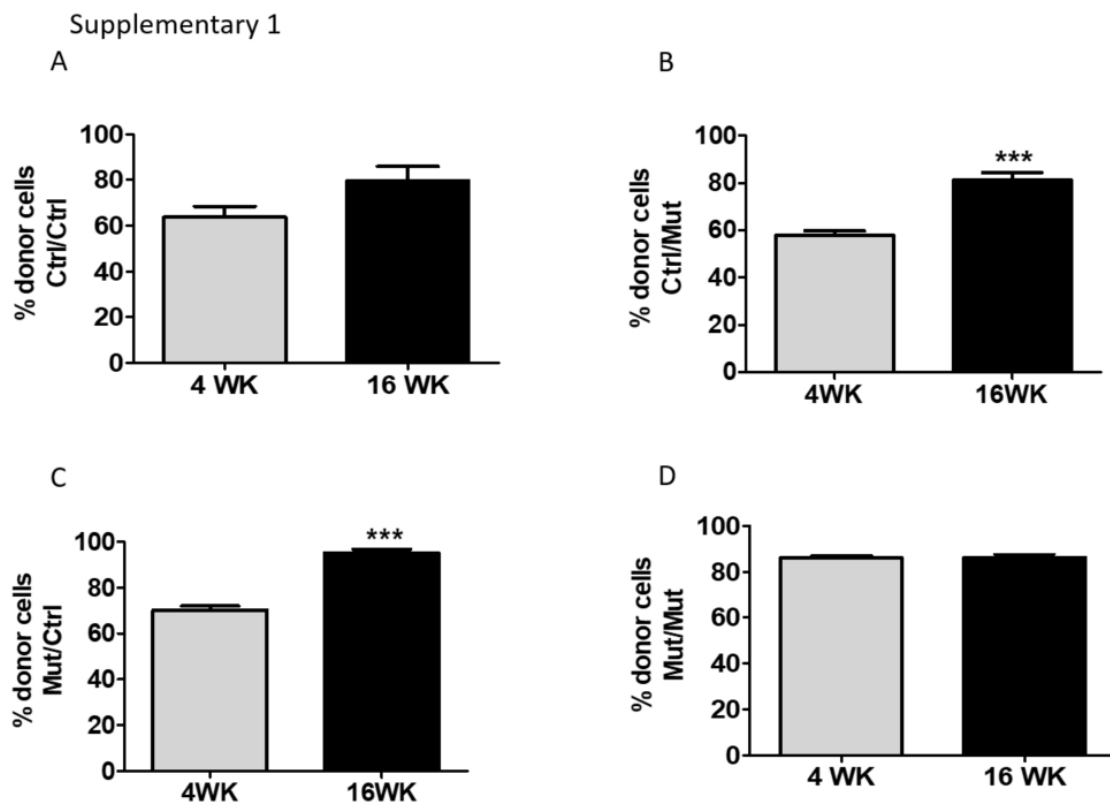


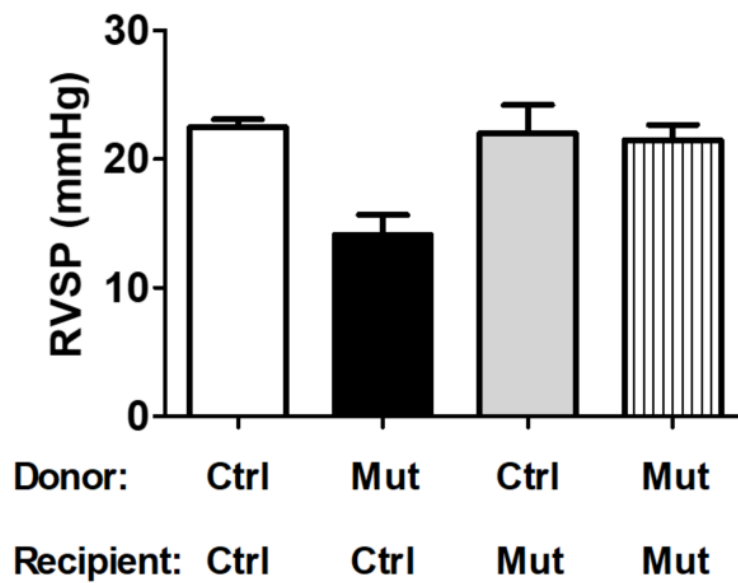
## SUPPLEMENTARY FIGURE LEGENDS

**Figure 1.** Bar charts showing percentage of donor cells in mice at 4 weeks and 16 weeks post-reconstitution in control mice with control bone marrow (BM) (Ctrl/Ctrl)(A), mutant mice with control BM (Ctrl/Mut)(B), mutant mice with control BM (Mut/Ctrl)(C) and mutant mice with mutant BM (Mut/Mut)(D). Data are presented as mean  $\pm$  SEM. \*\*\* $p < 0.001$ .



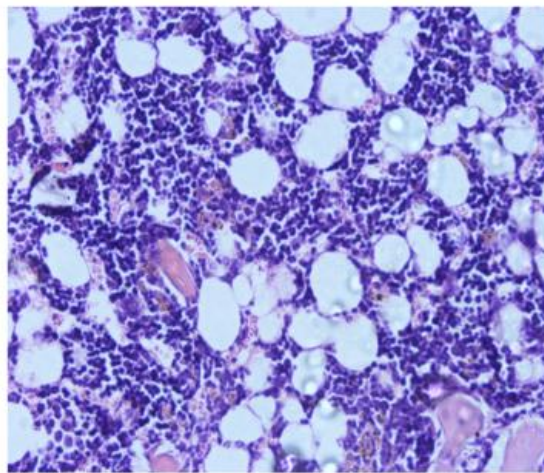
**Figure 2.** Bar graph showing right ventricular systolic pressure (RVSP), control mice with control bone marrow (Ctrl/Ctrl) (n=5) or with mutant bone marrow (Ctrl/Mut) (n=6), mutant mice with control bone marrow (Mut/Ctrl) (n=2) or with mutant bone marrow (Mut/Mut) (n=5). All mice were treated with PBS. Data are presented as mean  $\pm$  SEM.

Supplementary 2



**Figure 3.** Histological section of the bone marrow with haematoxylin and eosin stain in Ctrl/Ctrl treated with LPS.

### Supplementary 3



Donor: Ctrl  
Recipient: Ctrl