

Table S1: Percentage of IDA and IBRD project locations by sector, 2000-2011 for projects adjacent to IBAs, compared to all World Bank projects.

| <b>Sector Names</b>                      | <b>Adjacent to IBA</b> | <b>All Locations</b> |
|--|------------------------|----------------------|
| Transport and storage                    | 34.41%                 | 25.79%               |
| Water supply and sanitation              | 14.97%                 | 13.14%               |
| Government and civil society, general    | 5.64%                  | 9.87%                |
| Energy generation and supply             | 9.25%                  | 8.10%                |
| Health                                   | 6.92%                  | 7.69%                |
| Other social infrastructure and services | 5.36%                  | 7.57%                |
| Agriculture                              | 7.47%                  | 7.52%                |
| Agriculture, forestry, fishing           | 3.52%                  | 4.86%                |
| Basic education                          | 1.73%                  | 4.36%                |
| Banking and financial services           | 2.28%                  | 2.37%                |
| General environmental protection         | 1.89%                  | 1.34%                |
| Secondary education                      | 0.92%                  | 1.33%                |
| Industry                                 | 1.16%                  | 1.30%                |
| Forestry                                 | 1.03%                  | 1.14%                |
| Education, level unspecified             | 0.71%                  | 0.80%                |
| Post-secondary education                 | 0.84%                  | 0.76%                |
| Communications                           | 0.62%                  | 0.72%                |
| Mineral resources and mining             | 0.65%                  | 0.49%                |
| Other                                    | 0.45%                  | 0.47%                |
| Health, general                          | 0.16%                  | 0.35%                |
| Trade policy and regulations             | 0.01%                  | 0.03%                |
| Total                                    | 100.00%                | 100.00%              |
|  |                        |                      |

Table S2: Percentage of IDA and IBRD project commitment amounts by sector, 2000-2011 for projects adjacent to IBAs, compared to all World Bank projects.

| <b>Sector Names</b>                      | <b>Adjacent to IBAs</b> | <b>All Projects</b> |
|--|-------------------------|---------------------|
| Transport and storage                    | 45.66%                  | 30.86%              |
| Government and civil society, general    | 2.76%                   | 15.26%              |
| Energy generation and supply             | 21.23%                  | 15.08%              |
| Water supply and sanitation              | 11.16%                  | 9.29%               |
| Other social infrastructure and services | 2.42%                   | 5.37%               |
| Banking and financial services           | 1.74%                   | 5.25%               |
| Health                                   | 3.00%                   | 4.22%               |
| Agriculture                              | 3.89%                   | 3.85%               |
| Agriculture, forestry, fishing           | 1.59%                   | 1.96%               |
| Basic education                          | 0.49%                   | 1.77%               |
| Post-secondary education                 | 1.41%                   | 1.35%               |
| General environmental protection         | 1.11%                   | 0.88%               |
| Education, level unspecified             | 0.11%                   | 0.87%               |
| Secondary education                      | 0.30%                   | 0.83%               |
| Other                                    | 0.81%                   | 0.73%               |
| Industry                                 | 0.52%                   | 0.62%               |
| Forestry                                 | 0.82%                   | 0.60%               |
| Mineral resources and mining             | 0.78%                   | 0.57%               |
| Health, general                          | 0.07%                   | 0.35%               |
| Communications                           | 0.14%                   | 0.27%               |
| Trade policy and regulations             | 0.00%                   | 0.02%               |
| Total                                    | 100%                    | 100%                |

Table S3: Comparison of Funding Levels for Environment and Natural Resources Theme.

| <b>Quintile of Project Funding to Environment Theme</b> | <b>Distant from IBAs</b> | <b>Adjacent to IBAs</b> | <b>All Projects</b> |
|---|--------------------------|-------------------------|---------------------|
| <b>No funding</b>                                       | 80.05                    | 65.02                   | 72.57               |
| <b>1-20</b>   | 7.05                     | 10.92                   | 8.98                |
| <b>21-40</b>  | 5.71                     | 11.68                   | 8.69                |
| <b>41-60</b>  | 3.25                     | 6.13                    | 4.69                |
| <b>61-80</b>  | 1.64                     | 3.17                    | 2.4                 |
| <b>81-100</b>   | 2.29                     | 3.07                    | 2.68                |

Table S4. Summary of means for matching variables pre- and post-matching for WB-adjacent and WB-distant IBAs.

|                                | Pre-matching     |                  |          |                  | Matched          |          |                |
|--------------------------------|------------------|------------------|----------|------------------|------------------|----------|----------------|
|                                | Mean             | Mean             | Std Mean | Means            | Mean             | Std Mean | % balance      |
|                                | adjace           | distant          | diff     | adjace           | distant          | diff     | improvement    |
|                                | nt               |                  |          | nt               |                  |          | std Mean diff. |
| % agricultural land            | 0.3              | 0.285            | 0.077    | 0.3              | 0.262            | 0.022    | 71.42857       |
| Ruggedness (Riley 1999(        | 0.003            | 0.003            | 0.015    | 0.003            | 0.004            | 0.038    | -153.333       |
| Human population size          | 300.6            | 127.5            | 0.001    | 245.7            | 178.7            | -0.001   | 200            |
| (density per km <sup>2</sup> ) | 99               | 27               |          | 63               | 48               |          |                |
| Length of roads (km)           | 38.60            | 42.44            | 173.172  | 41.03            | 38.36            | 67.015   | 61.30148       |
|                                | 5                | 8                |          | 2                | 1                |          |                |
| Overlap with Protected Area    | 0.658            | 0.671            | -3.842   | 0.682            | 0.617            | 2.671    | 169.5211       |
| (Y/N)                          |                  |                  |          |                  |                  |          |                |
| GDP (\$)                       | 2.63             | 5.90             | -0.013   | 2.76             | 3.40             | 0.065    | 600            |
|                                | 10 <sup>11</sup> | 10 <sup>11</sup> |          | 10 <sup>11</sup> | 10 <sup>11</sup> |          |                |

Table S5 – see Table5.xlsx

Table S6 – see Table6.xlsx

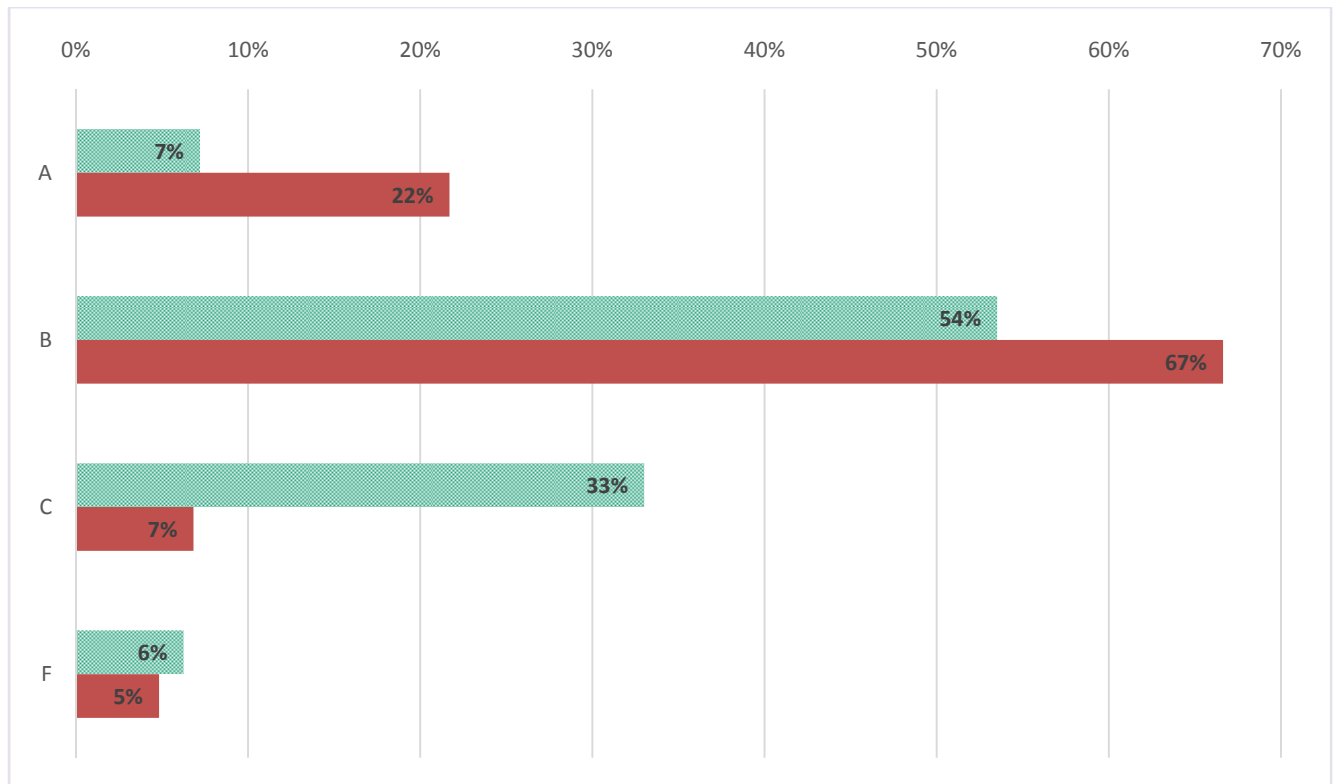


Figure S1: Project by World Bank Environmental Category (A, B, C, and F). Red bars indicate those projects adjacent to IBAs, compared to all World Bank projects, in green.

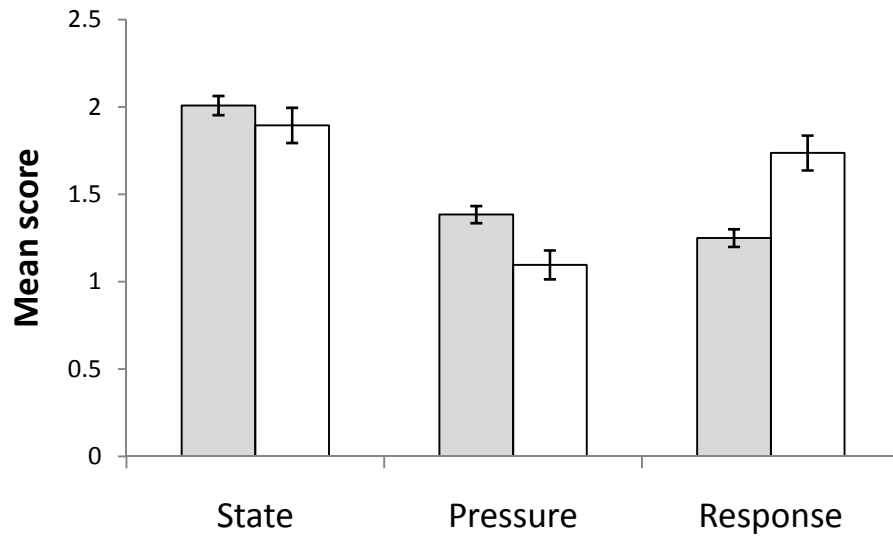


Figure S2. Mean ( $\pm$  SE) monitoring scores for state, pressure, and response for WB-distant IBAs (filled bar) and WB-adjacent IBAs (open bar) from country level matching. Differences between state were non significant ( $W=26556$ ,  $p=0.332$ ), but differences were significant for pressure ( $W=31545$ ,  $p=0.0025$ ) and response ( $W=33334.5$ ,  $P<0.0001$ ).

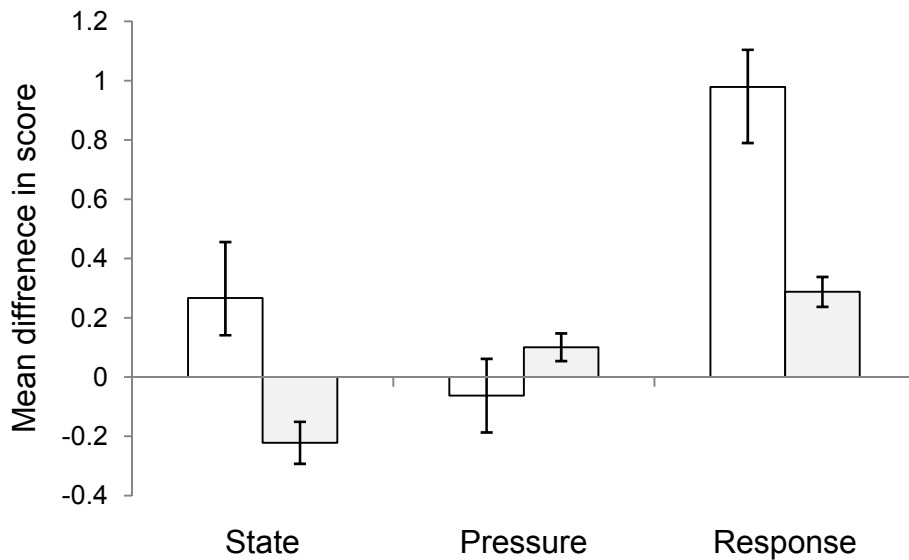


Figure S3. Mean ( $\pm$  SE) change in monitoring scores for state, pressure, and response for WB-distant IBAs (filled bar) and WB-adjacent IBAs (open bar) from country level matching. Positive scores indicate improvements in state, increasing pressures, and improving responses. The state of WB-adjacent IBAs showed greater improvement over time compared to WB-distant IBAs (Wilcoxon  $W = 8125.5$ ,  $P = 0.009$ ). The size of changes for pressure scores did not differ significantly (Wilcoxon  $W = 9129.5$ ,  $P = 0.361$ ), but response scores showed greater improvements on WB-adjacent IBAs compared to WB-distant IBAs (Wilcoxon  $W = 11835.5$ ,  $P < 0.0001$ ).