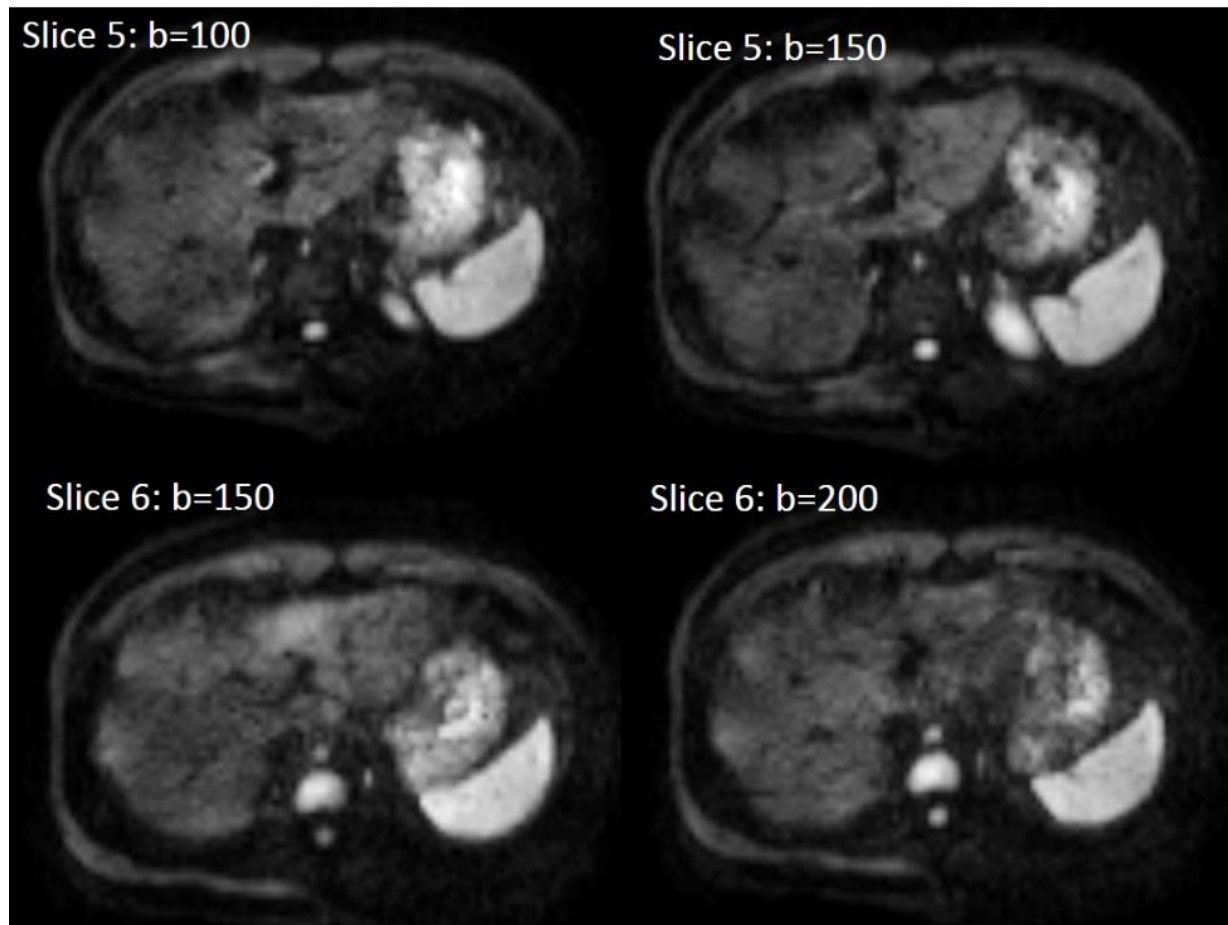
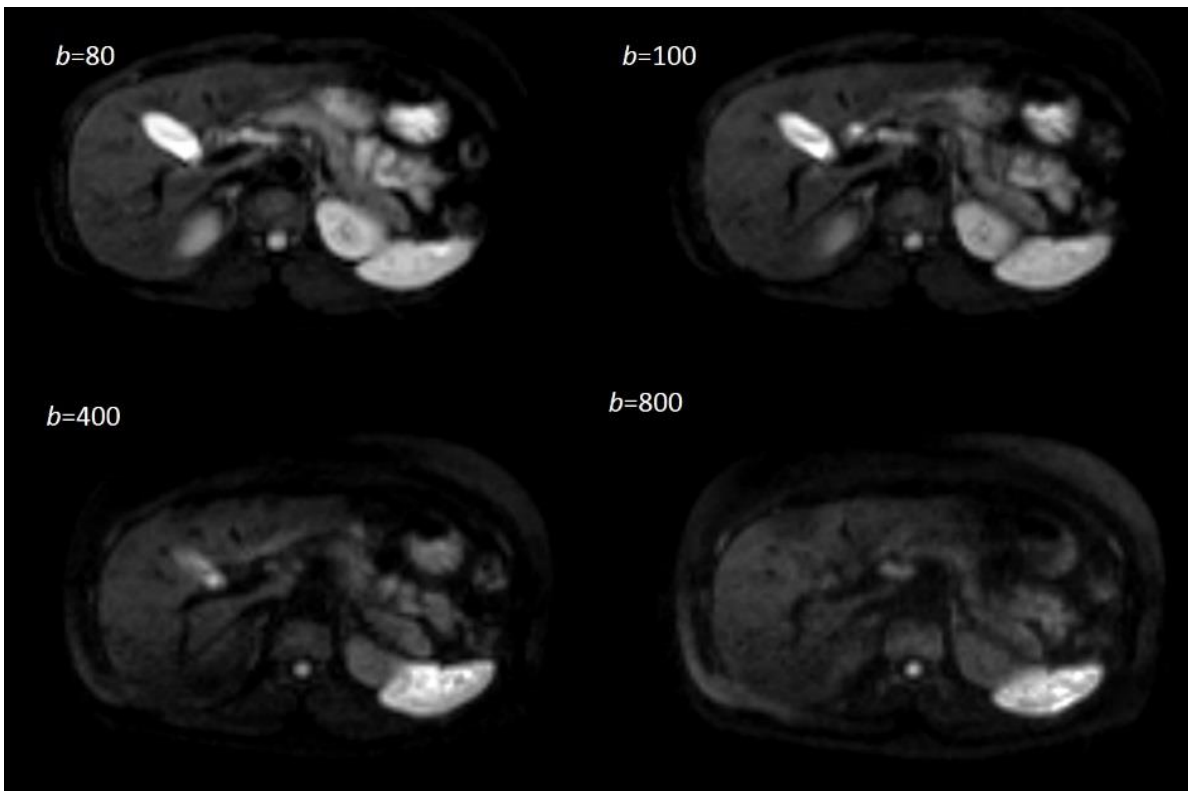


Supplementary documents

Examples of two scan subjected excluded from analysis in this study (Supplementary Fig 1, 2).



Supplementary Fig 1: Excluded Case 1. There is displacement of liver position among different *b*-values. In addition, signal distortion and inhomogeneity are noted.



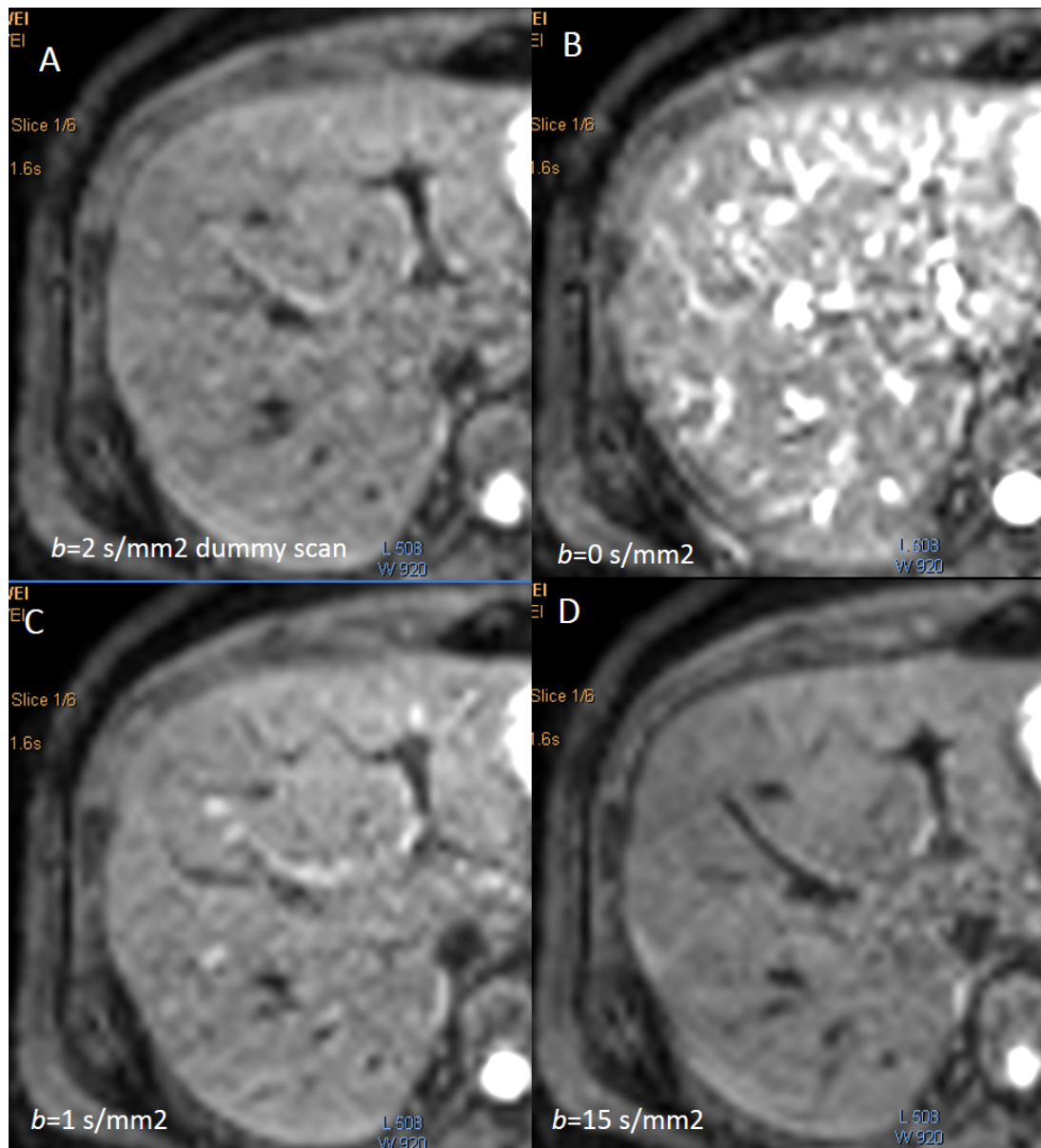
Supplementary Fig 2: Excluded Case 2. There is displacement of liver position among different b -values. Note the gallbladder shown at b -value= 80 s/mm^2 is not visible at b -value= 800 s/mm^2 . In addition, signal inhomogeneity is noted.

Supplementary document 1:

		Threshold b_40			Threshold b_60			Threshold b_80		
		F0	F1	F2-4	F0	F1	F2-4	F0	F1	F2-4
	PF mean	0.1	0.071	0.063	0.109	0.078	0.069	0.12	0.084	0.074
	PF SD	0.016	0.014	0.012	0.017	0.015	0.013	0.018	0.017	0.014
difference between F0 vs F1			0.029			0.031			0.036	
	Dslow mean	1.3	1.09	1.04	1.28	1.07	1.03	1.26	1.06	1.02
	Dslow SD	0.23	0.11	0.12	0.22	0.11	0.12	0.21	0.11	0.12
difference between F0 vs F1			0.21			0.21			0.2	
	Dfast mean	21.02	19.4	19.04	19.15	17.38	17.51	17.04	15.95	16.31
	Dfast SD	3.74	3.04	3.64	3.67	2.81	4.78	3.16	2.41	5.34
difference between F0 vs F1			1.62			1.77			1.09	
		Threshold b_100			Threshold b_150			Threshold b_200		
		F0	F1	F2-4	F0	F1	F2-4	F0	F1	F2-4
	PF mean	0.133	0.089	0.08	0.148	0.1	0.088	0.181	0.11	0.101
	PF SD	0.023	0.016	0.015	0.031	0.016	0.015	0.055	0.016	0.021
difference between F0 vs F1			0.044			0.048			0.071	
	Dslow mean	1.24	1.05	1.01	1.21	1.03	0.99	1.14	1.02	0.97
	Dslow SD	0.21	0.11	0.12	0.2	0.11	0.13	0.17	0.12	0.13
difference between F0 vs F1			0.19			0.18			0.12	
	Dfast mean	15.51	14.93	15.37	14.05	13.31	13.82	11.92	13.03	12.12
	Dfast SD	3.14	2.26	5.38	2.93	2.08	5.06	3.04	3.32	3.53
difference between F0 vs F1			0.58			0.74			-1.11	
product of PF*Dslow*Dfast	when b=40		0.00987							
product of PF*Dslow*Dfast	when b=60		0.0115							
product of PF*Dslow*Dfast	when b=80		0.00785							
product of PF*Dslow*Dfast	when b=100		0.00485							
product of PF*Dslow*Dfast	when b=150		0.00639							

A validation analysis of the support vector machine (SVM) method used in this article. The mean differences between F0 measurement and F1 measurement was computed for PF, Dslow, Dfast, and for threshold b=40, 60, 80, 100, 150, 200 [s/mm²] respectively, and then the product of PF*Dslow*Dfast was computed for threshold b=40, 60, 80, 100, 150 [s/mm²] respectively. In agreement with the support vector machine (SVM) analysis result, threshold b=60 [s/mm²] offers the largest PF*Dslow*Dfast product.

The mean difference between F0 measurement and F1 measurement of Dfast for threshold b=200 [s/mm²] is negative, therefore PF*Dslow*Dfast product for threshold b=200 [s/mm²] is not calculated.



Supplementary Fig 3: Typical liver EPI (echo planar imaging) diffusion images of b -value of 2 (dummy scan), 0, 1, and 15 (s/mm^2 , acquired with the same 1.5 Tesla scanner used for the study in this paper). b -value= 0 image (B) is associated with extensive bright blood signal.